



Symonds
& Sampson

1 Pound Cottages

Musbury Road, Axminster, Devon

1 Pound Cottages

Musbury Road
Axminster
Devon EX13 5JN

A two bedroom, end terraced cottage with a separate studio comes to the market with NO ONWARD CHAIN.



- Three storey cottage
 - Separate studio
- Double glazed windows
- Gas fired central heating
 - No Onward Chain

Guide Price £250,000
Freehold

Axminster Sales
01297 33122
axminster@symondsandsampson.co.uk



THE PROPERTY

A beautiful end of terrace stone cottage, with a detached studio located just a short walk from the town centre.

ACCOMMODATION

Access into the property leads you directly into the sitting room which has beams giving character to the cottage, with a staircase leading to the first floor which include the master bedroom with built in storage. Family bathroom to include shower over the bath, WC and wash hand basin. A good size landing grants access to the second floor with eaves storage and bedroom 2. The kitchen leads from the sitting room and has recently been refitted with built-in appliance including an oven, gas hob, dishwasher and fridge freezer. A double glazed door provides access to your rear garden. The property benefits with double glazed windows throughout.

OUTSIDE

The property is accessed via a shared path leading to number 1 & 2 Pound Cottages. The front garden is laid to lawn with a separate vegetable patch located a few steps away. The rear garden is enclosed with timber fencing and part walled, is low maintenance. A paved area leads to a detached studio which has a sink, hot water and WC fitted. Outside tap, and light. A pathway leading to a gate for side access back to the front of the property.

SITUATION

Located within the town, the cottage is well placed for local amenities and nearby schools. Axminster is a bustling market town on the eastern fringes of Devon, close to the border with West Dorset and South Somerset. The beautiful Axe Valley with its renowned bird sanctuary reaches the sea at Seaton (6 miles) and the famed beaches of the World Heritage Jurassic Coast and the resort of Lyme Regis are at a similar distance. Exeter (M5) is 24 miles, and Taunton 20 miles. Axminster itself offers a selection of shops including two supermarkets, schooling and train station that is on the direct line to London Waterloo and Exeter. There is a well-supported produce market held in Trinity Square every Thursday.

DIRECTIONS

What3words

///optimally.conqueror.resonates

SERVICES

Mains Electricity, Gas, Water & Drainage.

Broadband : Ultrafast available.

Mobile Network Coverage : Likely outside. Limited inside, although good coverage is available on Vodaphone.

Source - Ofcom.org.uk

LOCAL AUTHORITY

East Devon District Council

Tel : 01404 515616

Council Tax Band B

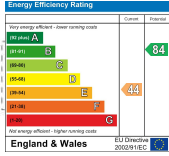
MATERIAL INFORMATION

The property is located in Flood Zone 1, an area with a low probability of flooding.

There is a private right of access around the gardens for the residents of the terrace.

A garage is available by separate negotiation.

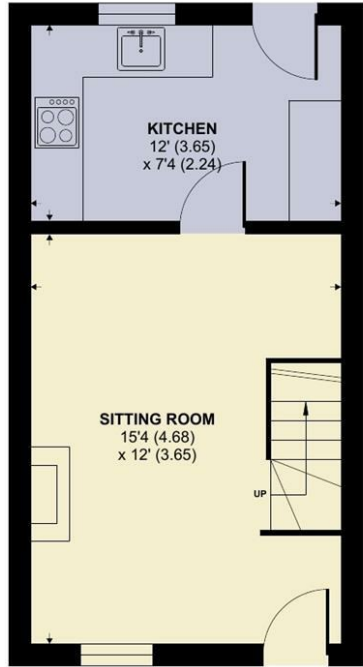




Musbury Road, Axminster

Approximate Area = 706 sq ft / 65.5 sq m
 Limited Use Area(s) = 15 sq ft / 1.3 sq m
 Outbuilding = 114 sq ft / 10.5 sq m
 Total = 835 sq ft / 77.3 sq m

For identification only - Not to scale



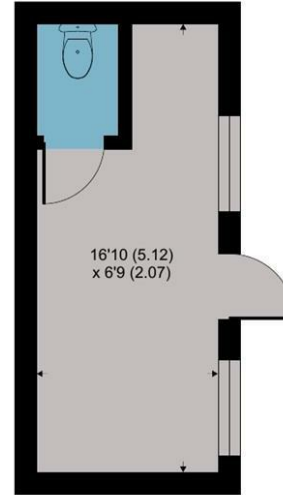
GROUND FLOOR



FIRST FLOOR



SECOND FLOOR



OUTBUILDING

Floor plan produced in accordance with RICS Property Measurement 2nd Edition, Incorporating International Property Measurement Standards (IPMS2 Residential). © nichecom 2025. Produced for Symonds & Sampson. REF: 1262759



AxmRes/RIS/24.3.25



01297 33122

axminster@symondsandsampson.co.uk
 Symonds & Sampson LLP
 , Trinity Square,
 Axminster, Devon EX13 5AW



Important Notice: Symonds & Sampson LLP and their Clients give notice that: 1. They have no authority to make or give any representations or warranties in relation to the property. These particulars do not form part of any offer or contract and must not be relied upon as statements or representations of fact. 2. Any areas, measurements or distances are approximate. The text, photographs and plans are for guidance only and are not necessarily comprehensive. It should not be assumed that the properties have all necessary planning, building regulation or other consents and Symonds and Sampson LLP have not tested any services, equipment or facilities. 3. We have not made any investigation into the existence or otherwise of any issues concerning pollution of the land, air or water contamination and the purchaser is responsible for making his/her own enquiries in this regard. 4. The property is sold subject to and with the benefit of all existing wayleaves, easements and rights of way whether public or private, specifically mentioned or not. The vendors shall not be required to define any such rights, privileges or advantages.

SALES | LETTINGS | AUCTIONS | FARMS & LAND | COMMERCIAL | NEW HOMES | PLANNING & DEVELOPMENT