



# 1 Rising Sun

Dalwood, Axminster, Devon

# 1 Rising Sun

Dalwood  
Axminster  
Devon EX13 7EF

A great family home that offers generous accommodation, stunning countryside views to the front aspect in a much sought after village location.



- Semi detached house
- Oil central heating & solar panels
- Enclosed rear garden
- Ample off road parking
  - Village location

Guide Price £375,000

Freehold

Axminster Sales  
01297 33122  
[axminster@symondsandsampson.co.uk](mailto:axminster@symondsandsampson.co.uk)



## THE PROPERTY

1 Rising Sun is welcomed to the market following an extensive range of improvements made by the current owners over the past seven years. These included a substantial ground floor extension which offers an additional reception room with bathroom and has great potential for buyers looking for a ground floor bedroom/annexe style accommodation. Other significant improvements include a modern fitted kitchen, replacement oil boiler and the addition of solar panels to name a few.

## ACCOMMODATION

This traditionally constructed semi detached house lies just off the centre of Dalwood village and is accessed via a driveway from the lane side. The house features a dual aspect sitting room with woodburning stove, well-appointed modern kitchen supplied by Wren Kitchens featuring a wide range of units, breakfast bar and integrated fridge/freezer. Space provided for additional appliances. Beyond the kitchen lies the single storey extension, completed in 2020. This multi purpose space features its own separate access, large laundry cupboard and contemporary shower room. The main reception space could be utilised in many ways including a downstairs bedroom, annexe area or as an additional living room. To the first floor are three bedrooms (2 doubles and 1 single), along with a family bathroom.

## OUTSIDE

A driveway provides space for numerous cars, with the remainder of the garden laid to lawn, set behind wooden fencing with the front enjoying views towards open countryside. The rear garden has a timber summerhouse and a westerly aspect to enjoy the evening sun with two seating areas and a tiered lawned garden. Gated side access.

## SITUATION

The picturesque village of Dalwood which has a well-regarded public house, The Tuckers Arms, a village shop, hall and church. Dalwood has good access to Axminster (about 5 miles west) and Honiton to the East, both offer good shopping facilities, and mainline railway stations on the Waterloo line. The coast at Lyme Regis or Sidmouth is also within easy reach. The Village lies between two ridges of the Blackdown Hills and has been designated an Area of Outstanding Natural Beauty since 1991. The scenery, wildlife, geology, and heritage make this a wonderful place to visit and explore.

## SERVICES

Mains electricity, water and drainage. Oil fired central heating. Client owner solar panels with feed in tariff.  
Broadband : Standard available.  
Mobile Network Coverage : Likely outside. Limited inside.  
Source - Ofcom.org.uk

## LOCAL AUTHORITY

East Devon District Council, Honiton, Devon. Tel : 01404 515616  
Council Tax Band C

## MATERIAL INFORMATION

Viewings are strictly by appointment. Please note the oak tree situated in the front garden has a tree preservation order.



# Rising Sun, Dalwood, Axminster

Approximate Area = 1249 sq ft / 116 sq m

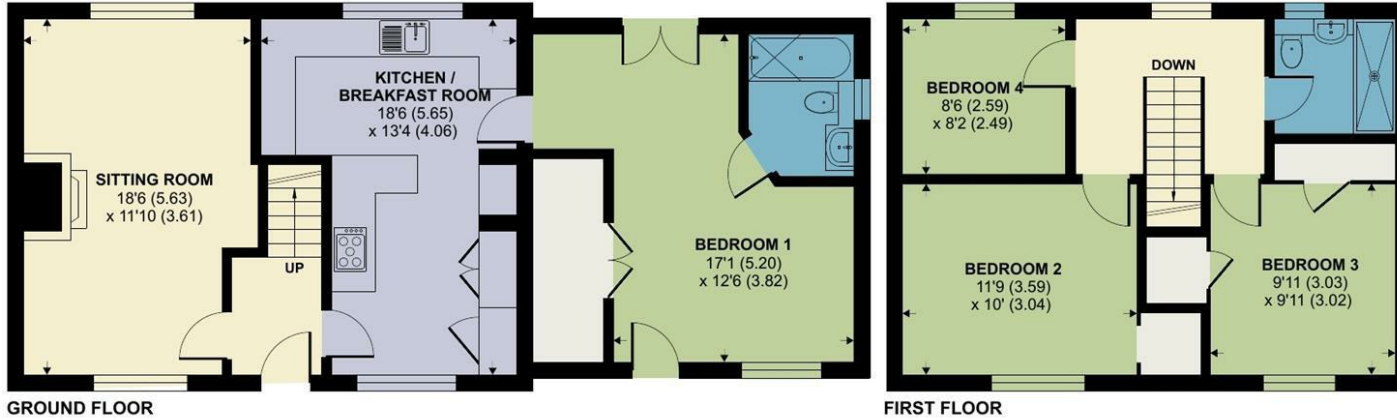
For identification only - Not to scale



Energy Efficiency Rating	
Band	Score
A	92-100
B	81-91
C	69-80
D	55-68
E	39-54
F	21-38
G	1-20

53 63

England & Wales



Floor plan produced in accordance with RICS Property Measurement Standards incorporating International Property Measurement Standards (IPMS2 Residential). © nchecon 2024. Produced for Symonds & Sampson. REF: 1181850



Axm/RS/12.9.24



01297 33122

axminster@symondsandsampson.co.uk  
Symonds & Sampson, Trinity Square,  
Axminster, Devon EX13 5AW



Important Notice: Symonds & Sampson LLP and their Clients give notice that: 1. They have no authority to make or give any representations or warranties in relation to the property. These particulars do not form part of any offer or contract and must not be relied upon as statements or representations of fact. 2. Any areas, measurements or distances are approximate. The text, photographs and plans are for guidance only and are not necessarily comprehensive. It should not be assumed that the properties have all necessary planning, building regulation or other consents and Symonds and Sampson LLP have not tested any services, equipment of facilities. 3. We have not made any investigation into the existence or otherwise of any issues concerning pollution of the land, air or water contamination and the purchaser is responsible for making his/her own enquiries in this regard. 4. The property is sold subject to and with the benefit of all existing wayleaves, easements and rights of way whether public or private, specifically mentioned or not. The vendors shall not be required to define any such rights, privileges or advantages.

SALES | LETTINGS | AUCTIONS | FARMS & LAND | COMMERCIAL | NEW HOMES | PLANNING & DEVELOPMENT