



CROWN

ESTATE AGENTS

Castle Grove, Pontefract



£700 Per Calendar Month



1



1

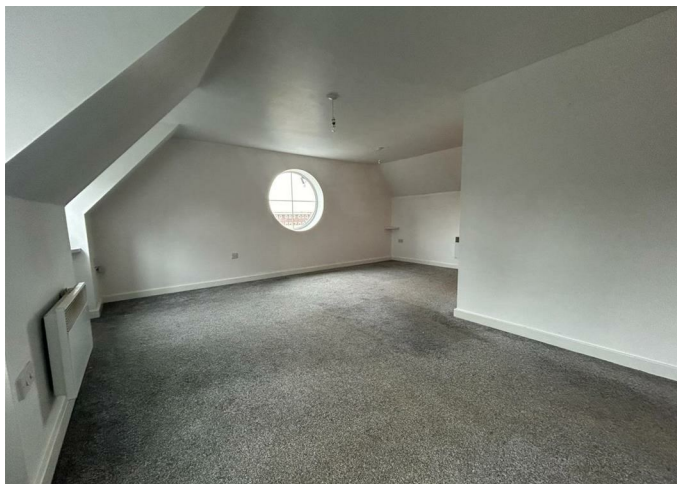


1



69

Take a look at this Lovely apartment located in the heart of Pontefract Town at Castle Grove. Situated in a prime location, this apartment offers convenience at your doorstep. With supermarkets, doctors' offices, schools, and motorway links just a stone's throw away. Additionally, the good public transport links make commuting a breeze, Don't miss the opportunity to make this apartment your new home. Book a viewing today....



- Good Size Lounge
- Fully Fitted Kitchen
- Bathroom
- Double Bedroom
- Tastefully Decorated
- Audio Door Entry System
- Well Maintained Grounds
- Council Tax Band A
- EPC Grade C

Call **01977 285 111** to view this property or visit www.crownestateagents.com

Opening hours:
Mon - Fri 9am - 5pm
Sat 10am - 2pm

Crown Estate Agents: 39-41 Ropergate, Pontefract WF8 1JY & 22 Bank Street, Castleford WF10 1JD. **CASTLE DWELLINGS**

Entrance Hall

With storage cupboards and door leading to communal landing.

Lounge (L Shaped)

16'11" x 19'1" (17'0" x 19'2") (5.16 x 5.82 (5.18 x 5.84))

With a feature porthole window and two further windows offering maximum light. There is also access to the loft which has been partially boarded and opening to the kitchen.

Kitchen

7'8" x 7'10" (2.34 x 2.39)

This modern fitted kitchen has a range of high and low level units, single sink drainer, mixer tap, stainless steel hob, built-in oven and extractor hood, plumbing for a washing machine, tiled surrounds and laminate flooring.

Double Bedroom

10'5" x 10'11" (10'6" x 11'0") (3.18 x 3.33 (3.20 x 3.35))

With a window and an electric heater.

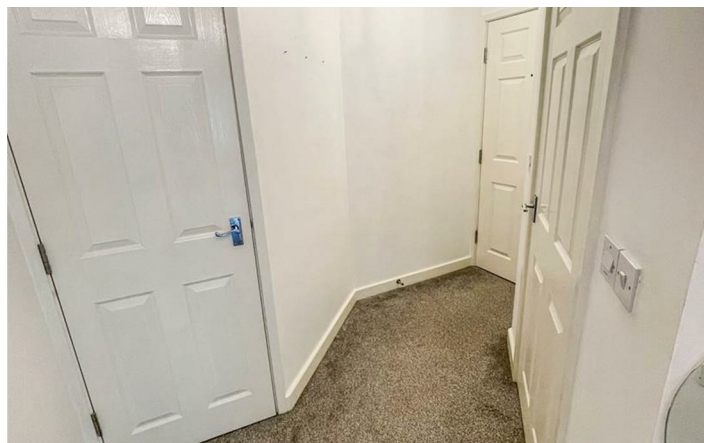
Bathroom

5'6" x 6'5" (1.68 x 1.96)

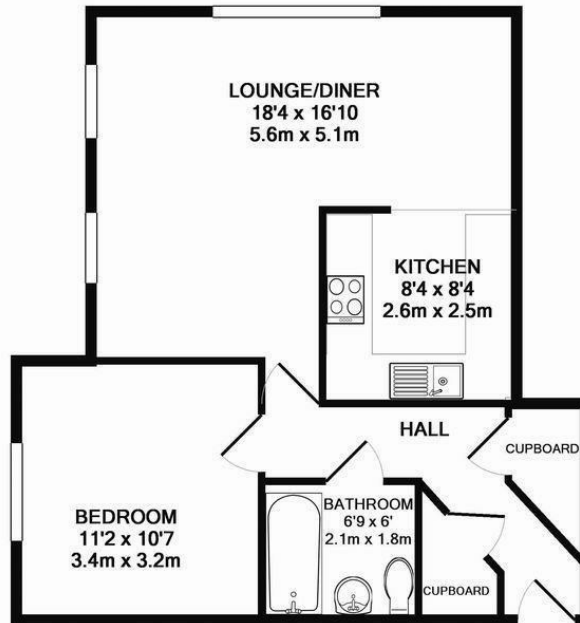
Fitted with a modern white suite comprising of a low flush W.C., wash hand basin, panelled bath with a shower over, heated towel rail and part tiling to the walls.

External

The property is set within well maintained grounds.




Floor Plan



Whilst every attempt has been made to ensure the accuracy of the floor plan contained here, measurements of doors, windows, rooms and any other items are approximate and no responsibility is taken for any error, omission, or mis-statement. This plan is for illustrative purposes only and should be used as such by any prospective purchaser. The services, systems and appliances shown have not been tested and no guarantee as to their operability or efficiency can be given.
Made with Metropix ©2016



Energy Efficiency Rating


	Current	Potential
Very energy efficient - lower running costs		
(92 plus) A		
(81-91) B		
(69-80) C	69	82
(55-68) D		
(39-54) E		
(21-38) F		
(1-20) G		
Not energy efficient - higher running costs		
England & Wales	EU Directive 2002/91/EC 	

Please call our Crown Estate Agents Office on 01977 600633 if you wish to arrange a viewing appointment for this property or if you require further information.

These particulars, whilst believed to be accurate are set out as a general outline only for guidance and do not constitute any part of an offer or contract. Intending purchasers should not rely on them as statements of representation of fact, but must satisfy themselves by inspection or otherwise as to their accuracy. No person in this firm's employment has the authority to make or give any representation or warranty in respect of the property.

Call 01977 285 111 to view this property or visit www.crownestateagents.com

Opening hours:
Mon - Fri 9am - 5pm
Sat 10am - 2pm

Crown Estate Agents: 39-41 Ropergate, Pontefract WF8 1JY & 22 Bank Street, Castleford WF10 1JD.  **CASTLE DWELLINGS**