



# CROWN

## ESTATE AGENTS

### Batley Street, Halifax



**£600 Per Calendar Month**



2



1



1



79

**\*\*AVAILABLE SOON\*\***

A double bed roomed flat located with the popular residential area of Halifax. Situated just over a mile away from the local Train Station. Other amenities such as Dentists, Schools and the Hospital are also within a short radius away. Contact Castle Dwellings to arrange your viewing today!



- Four Large Flats
- Two Double Bedrooms per Flat
- Open Plan Lounge Kitchen
- Bathroom with Shower Over
- On-Street Parking
- Well Presented Throughout
- Bond £2000.00
- Holding Fee £460.00
- Council Tax Band A

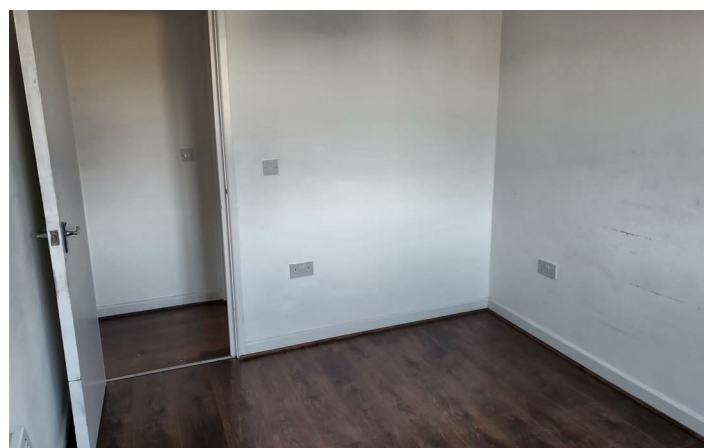
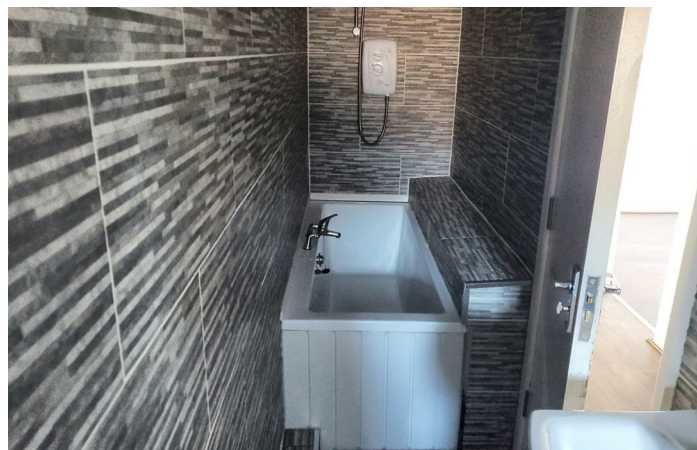
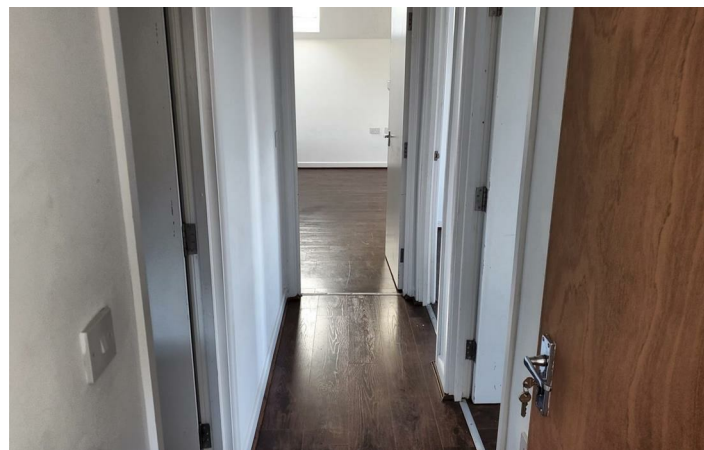
Call **01977 285 111** to view this property or visit [www.crownestateagents.com](http://www.crownestateagents.com)

Opening hours:  
Mon - Fri 9am - 5pm  
Sat 10am - 2pm

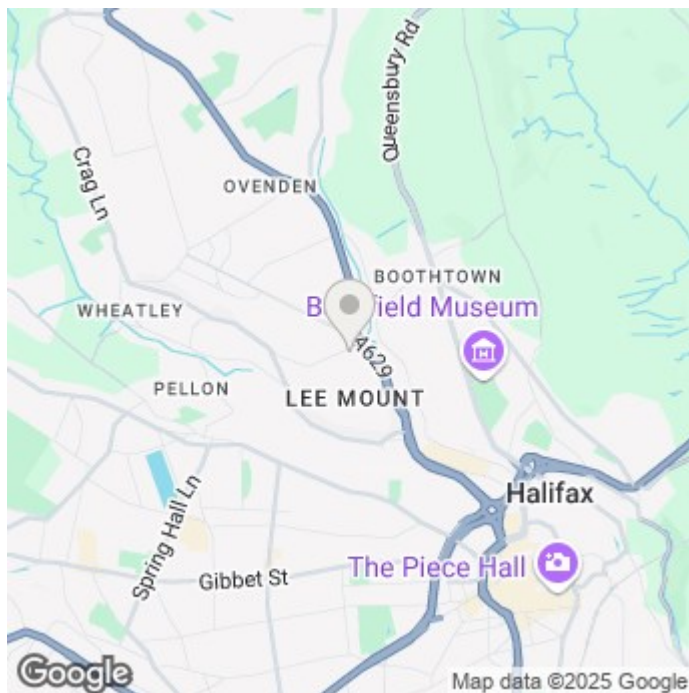
Crown Estate Agents: 39-41 Ropergate, Pontefract WF8 1JY & 22 Bank Street, Castleford WF10 1JD. **CASTLE DWELLINGS**








## Floor Plan



### Energy Efficiency Rating


	Current	Potential
Very energy efficient - lower running costs		
(92 plus) <b>A</b>		
(81-91) <b>B</b>	79	81
(69-80) <b>C</b>		
(55-68) <b>D</b>		
(39-54) <b>E</b>		
(21-38) <b>F</b>		
(1-20) <b>G</b>		
Not energy efficient - higher running costs		
<b>England &amp; Wales</b>	EU Directive 2002/91/EC 	

Please call our Crown Estate Agents Office on 01977 600633 if you wish to arrange a viewing appointment for this property or if you require further information.

These particulars, whilst believed to be accurate are set out as a general outline only for guidance and do not constitute any part of an offer or contract. Intending purchasers should not rely on them as statements of representation of fact, but must satisfy themselves by inspection or otherwise as to their accuracy. No person in this firm's employment has the authority to make or give any representation or warranty in respect of the property.

Call **01977 285 111** to view this property or visit [www.crownestateagents.com](http://www.crownestateagents.com)

Opening hours:  
Mon - Fri 9am - 5pm  
Sat 10am - 2pm

Crown Estate Agents: 39-41 Ropergate, Pontefract WF8 1JY & 22 Bank Street, Castleford WF10 1JD.  **CASTLE DWELLINGS**