



RIDGWAY
WIMBLEDON

JACKSON-STOPS 

RIDGWAY WIMBLEDON, SW19

ASKING PRICE: £2,600 PCM

A newly decorated two bedroom ground floor apartment with direct access to communal gardens and secure underground parking. The property offers over 950 sq ft of living space with a reception room, separate kitchen, two double bedrooms and two bathrooms.

The property is located just over half a mile from Wimbledon Village.

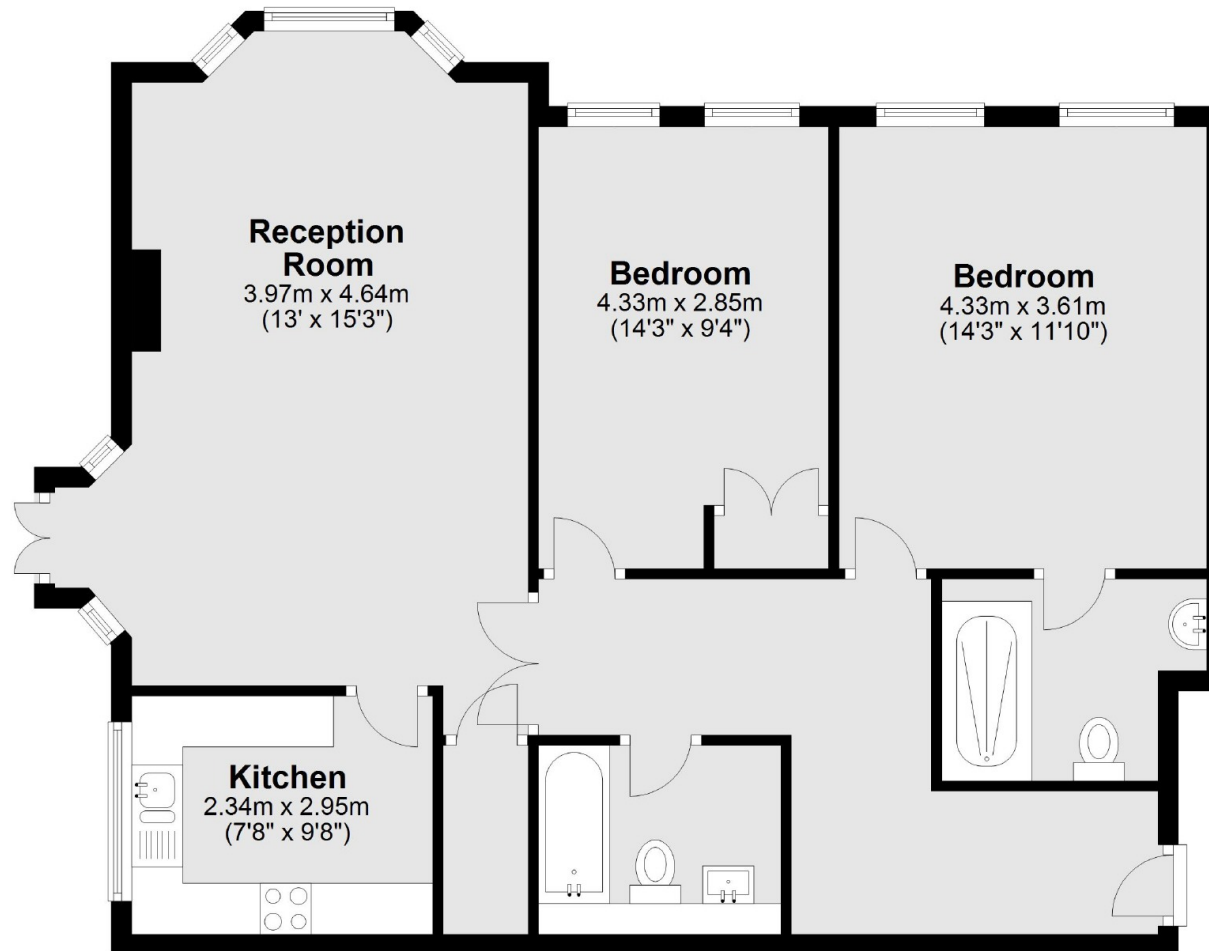


KEY FEATURES

- Two Bedrooms
- Reception Room
- Two Bathrooms
- Underground Parking
- Communal Gardens
- Close to Wimbledon Village



Ground Floor



Total area: approx. 85.9 sq. metres (924.9 sq. feet)

Energy Rating: C. We aim to make our particulars both accurate and reliable. However they are not guaranteed; nor do they form part of an offer or contract. If you require clarification on any points then please contact us, especially if you are travelling some distance to view. Please note that appliances and heating systems have not been tested and therefore no warranties can be given as to their good working order.

ASKING PRICE: £2,600 PCM

WIMBLEDON

020 8879 0099

wimbledon@jackson-stops.co.uk

jackson-stops.co.uk

JACKSON-STOPS 