



**HAMPTON CLOSE**  
WIMBLEDON

**JACKSON-STOPS** 

## HAMPTON CLOSE WIMBLEDON, SW20

ASKING PRICE: £3,900 PCM

A four bedroom family home with solid wooden flooring throughout, offering four bedrooms, one with an en suite and a further family bathroom. The property also has a large private garden and a driveway with parking for two cars.

Hampton Close is a popular cul-de-sac located on the "slopes" within the catchment area of many nearby schools and just over half a mile from Raynes Park station.

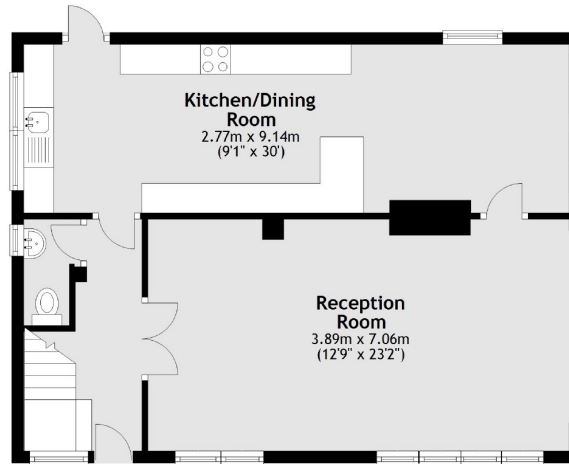


### KEY FEATURES

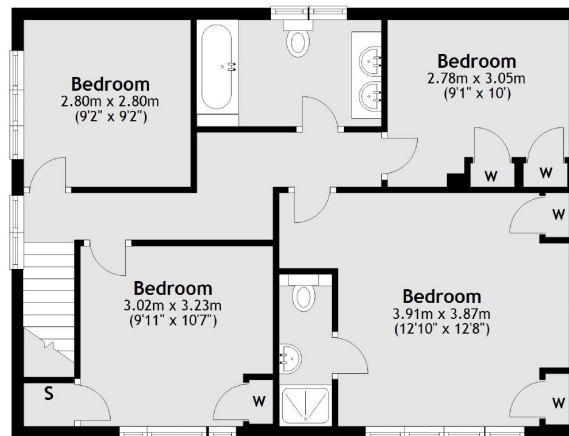
- Four Bedrooms
- Separate Eat In Kitchen
- Large Reception Room
- Large Garden
- Driveway
- Wooden Flooring



### Ground Floor



### First Floor



Total area: approx. 124.6 sq. metres (1340.7 sq. feet)

Energy Rating: D. We aim to make our particulars both accurate and reliable. However they are not guaranteed; nor do they form part of an offer or contract. If you require clarification on any points then please contact us, especially if you are travelling some distance to view. Please note that appliances and heating systems have not been tested and therefore no warranties can be given as to their good working order.

**ASKING PRICE: £3,900 PCM**

WIMBLEDON

020 8879 0099

wimbledon@jackson-stops.co.uk

jackson-stops.co.uk

**JACKSON-STOPS** 