



TOLVERNE ROAD
WEST WIMBLEDON

JACKSON-STOPS 

TOLVERNE ROAD WEST WIMBLEDON, SW20

ASKING PRICE: £2,550 PCM

A two bedroom mid-terrace house which is due to be re-decorated throughout. The property comprises open plan kitchen/dining room with doors to a garden; front reception room and a downstairs shower room; master bedroom, further double bedroom and a family bathroom.

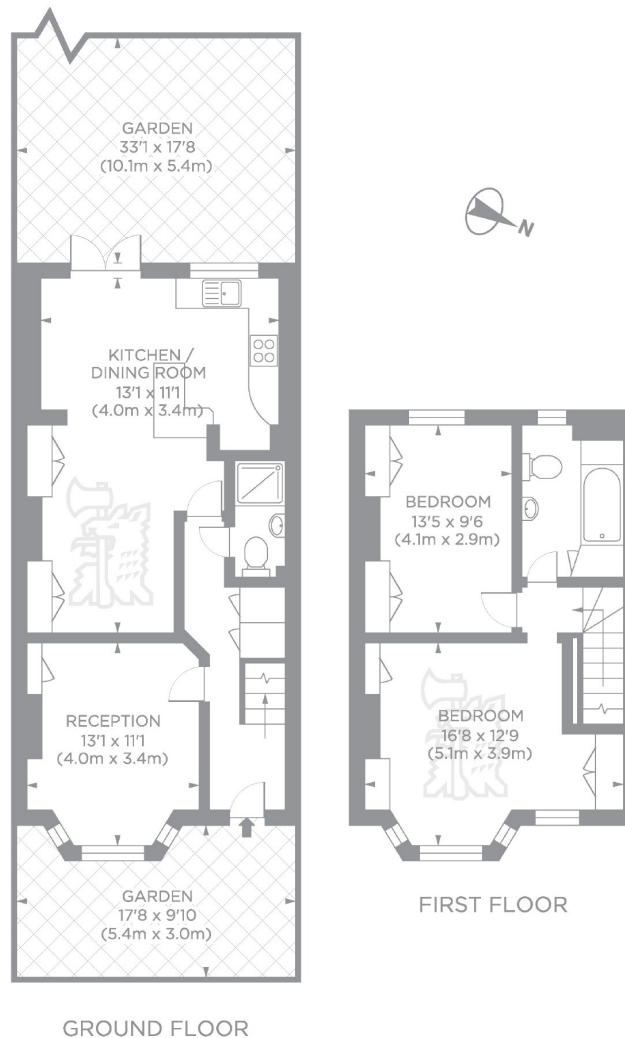
Tolverne Road is in the heart of Raynes Park on quiet residential road. It is within walking distance of Raynes Park station and the many nearby amenities. It is also in the catchment area of Holly Mount Primary School.

KEY FEATURES

- Due To Be Redecorated
- Two Double Bedrooms
- Private Rear Garden
- Kitchen/Living Area
- Front Reception Room
- Unfurnished







GROUND FLOOR

FIRST FLOOR

Tolverne Road, SW20

Gross internal area 1011 sq ft/94 sq metres

©photosandfloorplans.com

Energy Rating: . We aim to make our particulars both accurate and reliable. However they are not guaranteed; nor do they form part of an offer or contract. If you require clarification on any points then please contact us, especially if you are travelling some distance to view. Please note that appliances and heating systems have not been tested and therefore no warranties can be given as to their good working order.

ASKING PRICE: £2,550 PCM

WIMBLEDON

020 8879 0099

wimbledon@jackson-stops.co.uk

jackson-stops.co.uk

JACKSON-STOPS 