



COTTENHAM PARK ROAD
WEST WIMBLEDON

JACKSON-STOPS 

COTTENHAM PARK ROAD WEST WIMBLEDON, SW20

ASKING PRICE: £3,500 PCM

A three bedroom family home located 0.9 miles from Raynes Park Station in a quiet cul-de-sac. Comprising a (fitted) modern eat-in kitchen, a spacious living/dining room with wooden floors leading through to a private garden, downstairs cloakroom, three bedrooms, one with ensuite and a family bathroom. Further benefits include fitted wardrobes, double-glazing, a garage and off street parking. EPC C

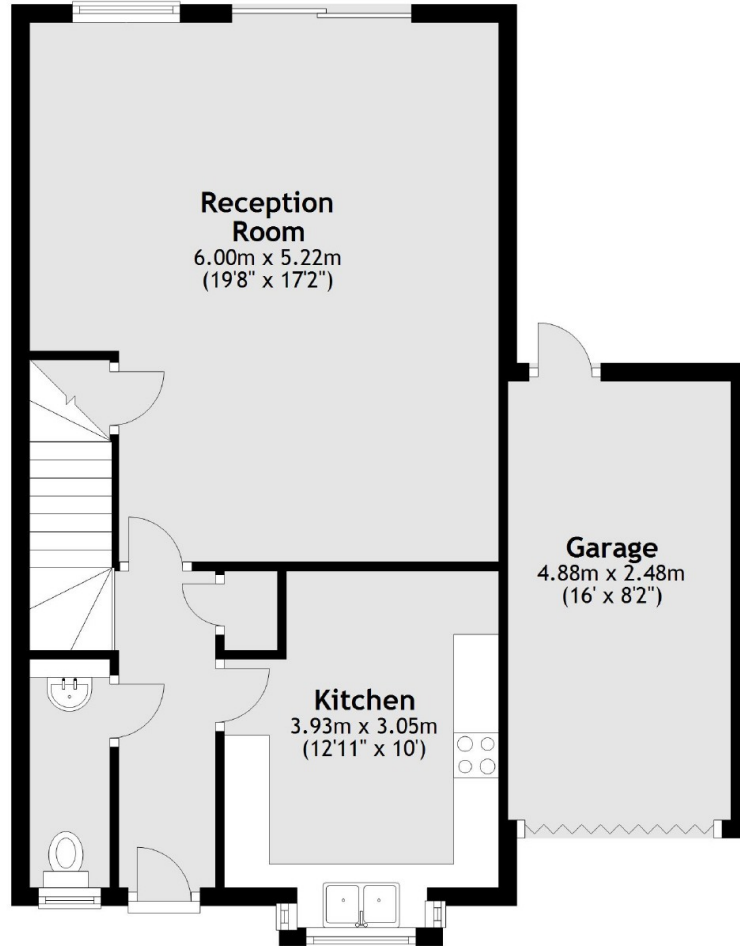


KEY FEATURES

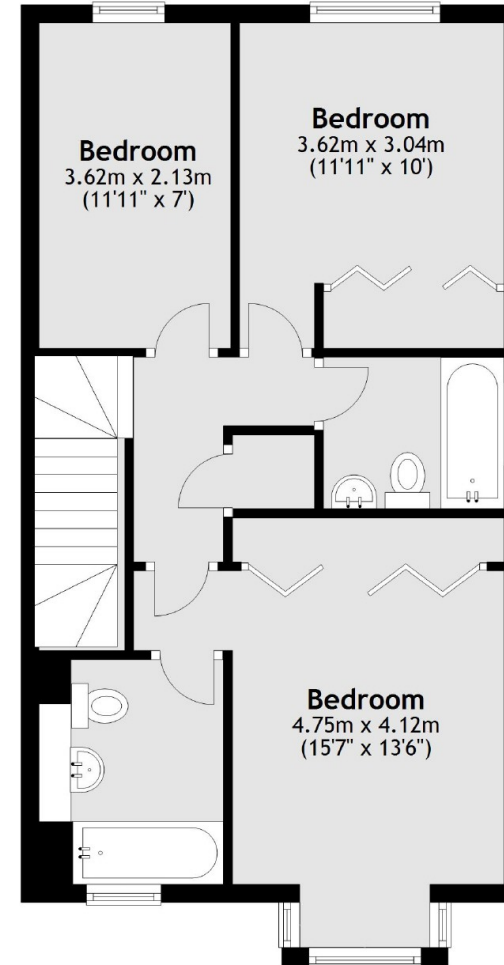
- Three Bedrooms
- Cul-de-sac
- Garage
- Off Street Parking
- Eat In Kitchen
- Private Garden



Ground Floor



First Floor



Main area: Approx. 101.8 sq. metres (1095.3 sq. feet)
Plus garages, approx. 12.1 sq. metres (130.4 sq. feet)

Energy Rating: . We aim to make our particulars both accurate and reliable. However they are not guaranteed; nor do they form part of an offer or contract. If you require clarification on any points then please contact us, especially if you are travelling some distance to view. Please note that appliances and heating systems have not been tested and therefore no warranties can be given as to their good working order.

ASKING PRICE: £3,500 PCM

WIMBLEDON

020 8879 0099

wimbledon@jackson-stops.co.uk

jackson-stops.co.uk

JACKSON-STOPS 