



Price

£525,000
Freehold

Wyatts Lane, Northwood, Isle of Wight,
PO31

Wyatts Lane, Northwood, Isle of Wight, PO31

1.9 miles from West Cowes to Southampton Ferry
8.1 miles from Fishbourne to Portsmouth Ferry
11.3 miles from Yarmouth to Lymington Ferry

An attractive detached home in a popular location - close to schools, shops and mainland commuter links, yet walking distance to country walks too.

Idyllic detached house in a rural setting

Picturesque gardens and sublime kerb appeal

Sought after village location

Set on a prestigious lane in Northwood with forest and river walks close by

Ideally located close in the heart of the community, close to the primary school and shops





A superb family home, located on a popular rural lane in the village of Northwood, enjoying far reaching country views from its first-floor bedrooms. The accommodation is versatile with two ground floor and two first floor bedrooms, all served by a family bathroom offering a complete suite, with a shower and a bath, as well as an adjacent cloakroom.

Occupied for many years by its current owners, the property has provided a wonderful, spacious, family home, with three large reception rooms, a beautifully crafted fitted kitchen and a substantial rear garden. The large conservatory which leads from the large kitchen provides a superb area to dine and sit and relax overlooking the glorious manicured mature garden.

There is ample parking within the home's long driveway with the addition of a pitch roofed, detached garage which is currently used as a workshop with overhead storage.

The location of the home is ideal for buyers seeking a property within easy reach

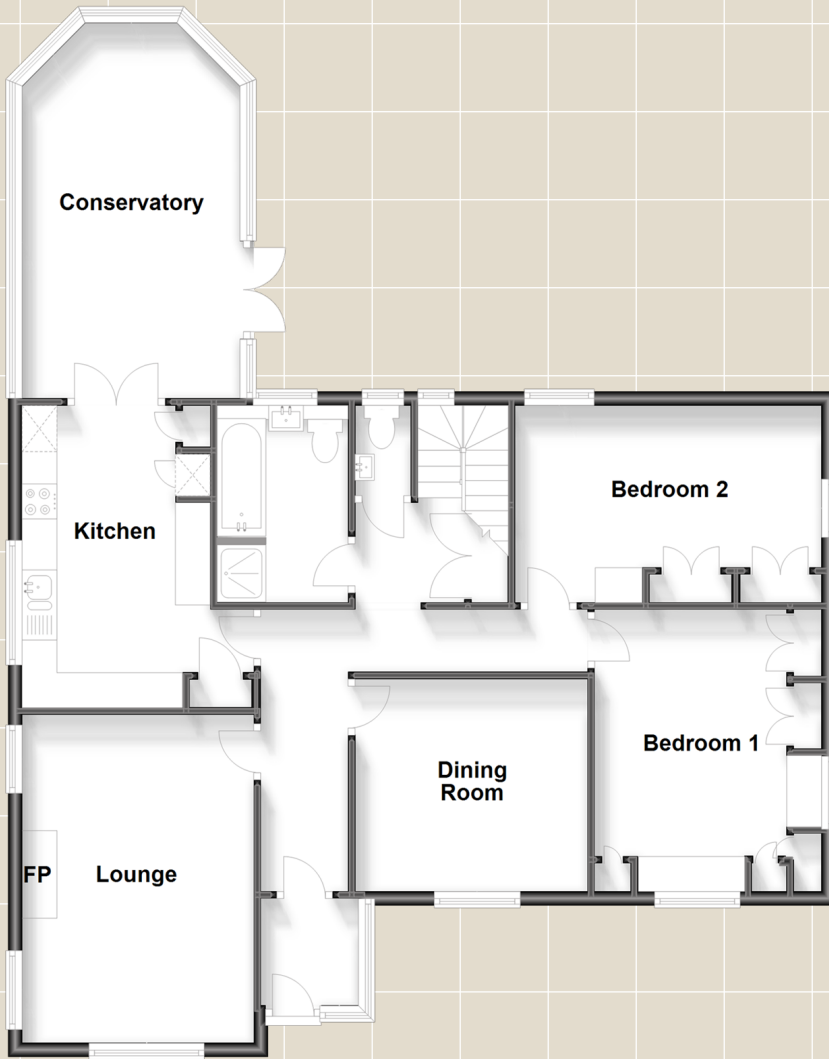
of beautiful country walks and amenities, with the bustling town of Cowes a 5-minute drive away. Cowes is renowned for its sailing events and its plethora of individual shops, restaurants and bars.

What the owner says...

'''

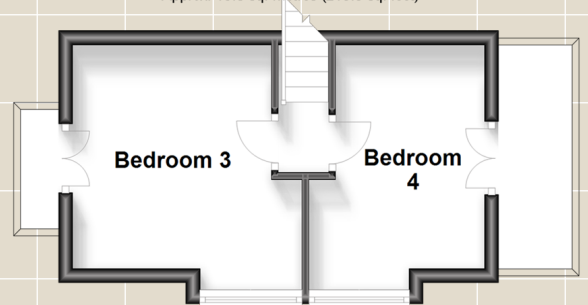
Ground Floor

Approx. 105.7 sq. metres (1137.4 sq. feet)



First Floor

Approx. 19.8 sq. metres (213.3 sq. feet)



For directions to this property please contact us.

Viewing: Strictly by appointment with Fine & Country's offices in:

Cowes on 01983 520000

14 High Street, Cowes, Isle of Wight, PO31 7RZ

isleofwight@fineandcountry.com

London office

121 Park Lane, Mayfair, London, W1K 7AG

