



Millstone Cottage  
Main Road | Brighstone | Isle of Wight | PO30 4DJ



# Seller Insight

“ We came here 14 years ago and have loved every minute of it. The house and the surroundings have been a wonderful place to raise our family who have enjoyed playing in the nearby stream, exploring the forest and being able to stroll down to the beach. There is a wonderful sense of community and the village boasts a pub, two cafes, a convenience store, gift shop and a primary school within walking distance as well as plenty of footpaths, bridleways and cycle tracks in the vicinity. The interesting Isle of Wight Pearl has a delightful café where you can revel in uninterrupted sea views, while visitors and residents alike enjoy the Brightstone Christmas Tree Festival with 150 decorated trees located around the area. Freshwater Bay, one of the most picturesque beaches in West Wight, is only a ten-minute drive away. There is a regular bus service to Newport which is only about seven miles away while Yarmouth and Freshwater are about the same distance.

Newport is the county town of the Isle of Wight and includes a variety of high street stores and independent shops as well as wide selection of restaurants and bars. There are a number of primary and secondary schools within the vicinity. It is not far from the Shide Nature Reserve and the walks or cycle rides along the River Medina are a real pleasure, while the Newport Golf Club is available for golfing enthusiasts.

There are plenty of local attractions including a museum, a roman villa and the quay arts centre as well as the famous Carisbrooke Castle and Monkey Haven. A variety of annual events take place in the area including the world famous Isle of Wight festival.

As well as the ferry port and marina Yarmouth includes a 16th century castle, a Grade II listed pier that provides views across The Solent and a raft of cafes, restaurants, bars and individual shops. There is also nearby Tapnell Park and Fort Victoria Park.\*

\* These comments are the personal views of the current owner and are included as an insight into life at the property. They have not been independently verified, should not be relied on without verification and do not necessarily reflect the views of the agent.









# Step inside

## Millstone Cottage

---

Nestled within the picturesque coastal village of Brighstone—an Area of Outstanding Natural Beauty between Ventnor and Freshwater—this beautifully presented stone-built cottage offers a rare opportunity to enjoy quintessential English village life with all the benefits of modern living. Brighstone itself is something of a hidden gem: a tranquil, characterful village brimming with charm. At its heart lies a cluster of traditional farmhouses, thatched cottages crafted from local ‘clunch’ stone, and a historic church. The National Trust owns a particularly iconic row of cottages here, complete with a small museum and community library, reflecting the village’s rich heritage.

A short stroll from the village centre lies this beautiful cottage, a distinctive residence that continues the theme of traditional stone architecture while offering a unique blend of old-world charm and updated living spaces. Originally rebuilt in 1967 further back from the roadside, and sympathetically extended in the 1990s, the cottage has been constructed to modern standards while retaining the warmth and texture of a bygone era. Features such as cavity walls, roof insulation, and double glazing ensure year-round comfort and efficiency without compromising the property’s timeless appeal.

Approached via a spacious block-paved driveway framed by mature shrubbery, the property immediately impresses with its oak front doors, eye-catching dormer windows, central chimney, and pitched roof porch. Step inside, and the charm continues: a spacious, dual-aspect reception lounge welcomes you with stone flooring, a feature stone wall, and a bespoke timber staircase. French doors lead from here into a wonderfully cosy sitting room, the heart of the home, complete with a striking stone and brick fireplace and a log-burning stove—perfect for winter evenings.

The cottage’s sociable layout is ideal for family living and entertaining. The open-plan kitchen/breakfast room, installed just five years ago, boasts sleek gloss cabinetry, durable Corian worktops, and a full suite of integrated appliances including a steam oven, combi microwave, larder fridge, freezer, and coffee machine. A single door connects the kitchen to a light-filled garden room or dining space, with another feature stone wall, a wall of windows, and doors opening out to the landscaped rear garden.

A flexible ground-floor bedroom, separate study with French doors, a utility room, and a stylish shower room complete the downstairs. This section of the home could easily serve as a self-contained annexe, with potential for private access—ideal for guests, multi-generational living, or even holiday rental use.

Upstairs, you’ll find three generously sized double bedrooms, one with dual-aspect views, another with a luxurious en-suite featuring twin basins and a double shower, plus a sleek family bathroom.

The rear garden has been thoughtfully designed for relaxation and entertainment, with a gravel terrace, lawn, and separate decked area complete with outdoor bar and food prep zone. Surrounded by solid fencing, the garden offers total seclusion and security.

This cottage offers the rare combination of heritage charm, modern comfort, and flexible living spaces—all set within one of the Isle of Wight’s most desirable villages.









**Travel Information**

8.7 miles from Yarmouth to Lymington Ferry Terminal  
12.4 miles from Fishbourne to Portsmouth Ferry Terminal  
12.8 miles from East Cowes to Southampton Ferry Terminal

Southern Vectis Buses routes provide regular services through the area, connecting you to all the areas of the island. For ticket prices visit [www.islandbuses.info](http://www.islandbuses.info)

**Leisure Clubs & Facilities**

1Leisure Medina, Newport	8.5 miles
Freshwater Bay Golf Club, Freshwater	5.9 miles
Isle of Wight County Cricket Ground, Blackwater	8.1 miles
West Wight Sports Centre, Freshwater	7.2 miles

**Healthcare**

Doctors Surgeries	
Brighstone Surgery, Brighstone	01983 740219
Brookside Health Centre, Freshwater	01983 758998
Carisbrooke Health Centre, Carisbrooke	01983 522150
Medina Health Care, Newport	01983 522198
Pyle Street Surgery, Newport	01983 523525

General Hospitals	
St Mary's Hospital, Parkhurst Road, Newport	8.6 miles 01983 822099

**Education**

Primary Schools	
Brighstone CE Primary School, Brighstone	01983 740285
Shalfleet CE Primary School, Shalfleet	01983 760269
Carisbrooke CE Primary School, Carisbrooke	01983 522348
St Thomas Of Canterbury Primary School, Carisbrooke	01983 522747
Newport CE Primary School, Newport	01983 522826
Hunnyhill Primary School, Newport	01983 522506
Chillerton & Rookley Primary School, Chillerton	01983 721207

Secondary Schools/Colleges:	
Carisbrooke College, Carisbrooke	01983 524651
Christ The King Upper College, Newport	01983 537070
Medina College, Newport	01983 861222
Ryde Academy, Ryde	01983 567331
The Island VI Form, Newport	01983 522886
The Isle of Wight College, Newport	01982 526 631

Learning Assisted Schools:	
Medina House, School Lane, Newport	01983 522 917
St. Georges, Watergate Road, Newport	01983 524 634
St Catherines, Grove Road, Ventnor	01983 858722

**Entertainment**

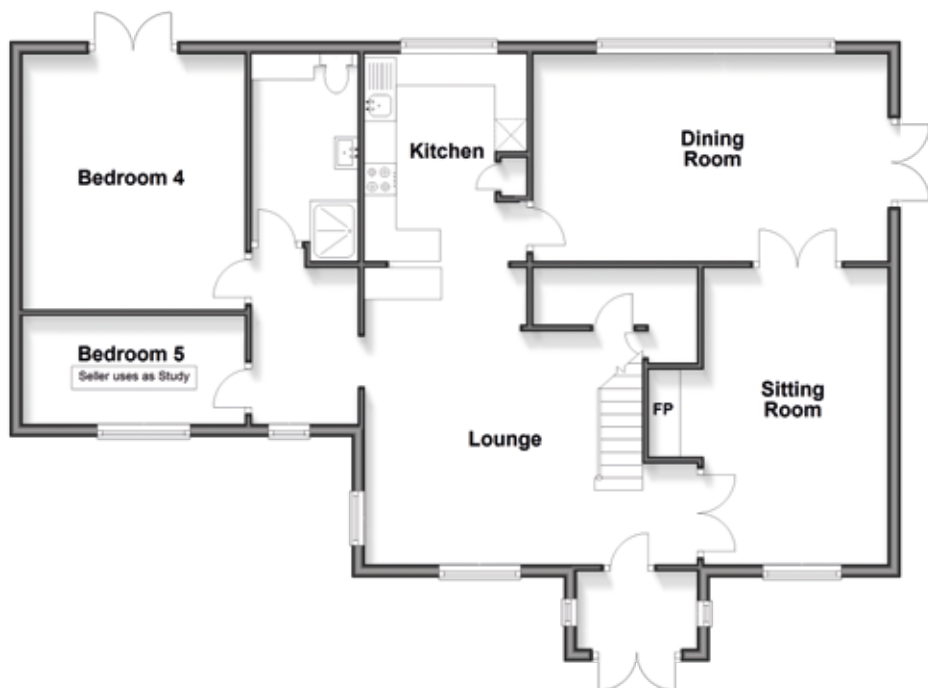
Restaurants / Bars  
Three Bishops Inn, Brighstone  
The Sun Inn, Hulverstone  
The Crown Inn, Shorwell  
Horse & Groom, Ningwood  
Wight Mouse Inn, Chale  
The Sun Inn, Calbourne  
The Horse & Groom, Shalfleet  
The Llama Tree Bistro & Pizzeria, Ningwood  
The Cow, Tapnell

These bars and restaurants are available within a 15-minute drive of this home.

**Local Attractions / Landmarks**

Isle of Wight Pearl Centre, Brighstone  
Blackgang Chine, Blackgang  
Tapnell Farm, Yarmouth  
Fort Victoria Country Park, Norton  
St Catherine's Oratory, Niton  
The Needles Landmark Attraction, Alum Bay  
Carisbrooke Castle, Carisbrooke  
Monkey Haven Primate Rescue Centre, Newport  
Robin Hill Country Park, Downend

**Ground Floor**  
Approx. 100.5 sq. metres (1081.5 sq. feet)



**First Floor**  
Approx. 56.1 sq. metres (603.4 sq. feet)



## GROUND FLOOR

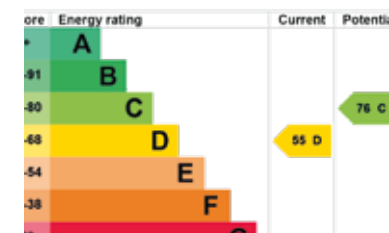
Entrance Porch	
Sitting Room	15'4 x 9'10
Lounge	15'3 x 14'2
Kitchen	10'10 x 8'8
Dining Room	18'1 x 10'11
Inner Hallway	
Shower Room	
Study	11'6 x 10'7
Guest Room	11'7 x 8'6

## FIRST FLOOR

Landing	
Bedroom 1	14'11 x 12'7
En-Suite Shower Room	
Bedroom 2	15'3 x 10'2
Bedroom 3	16' x 9'
Family Bathroom	

## OUTSIDE

Driveway Parking  
Garage  
Rear Garden



Council Tax Band: E  
Tenure: Freehold

Fine & Country  
Tel: +44 (0)1983 520000  
isleofwight@fineandcountry.com  
14 High Street, Cowes, Isle of Wight, PO31 7RZ

