

Price

£650,000
Share of Freehold

Cliff Road, Totland Bay, Isle of Wight, PO39

Cliff Road, Totland Bay, Isle of Wight,
PO39

3.3 miles from Yarmouth to Lymington Ferry
17.4 miles from Fishbourne to Portsmouth Ferry
16 miles from West Cowes to Southampton Ferry

This penthouse is more than just a home—it is a refined lifestyle experience, defined by space, light, and an unparalleled connection to the sea.



Spectacular penthouse with panoramic
sea views and curved balcony

En-suite facilities to all of the bedrooms,
including a luxurious principal suite

High-end Nolte kitchen with Miele
appliances and Corian surfaces

Exclusive lift access, private garage, and
additional parking

Steps from Totland Bay beach, village
shops, and coastal dining





This outstanding penthouse apartment offers a rare blend of striking design, luxurious finishes, and breathtaking coastal views. From the moment you enter, the circular living room with vaulted ceilings and bi-folding doors draws your attention to a curved balcony overlooking panoramic sea vistas—delivering an unforgettable first impression.

Every detail of this home has been carefully considered, starting with the German-designed Nolte kitchen, complete with high-spec Miele appliances, Corian work surfaces, and a sleek central island. The kitchen flows effortlessly into the dining area, making the most of the natural light and stunning outlook, while providing seamless access to outdoor dining space on the balcony.

The apartment features three spacious double bedrooms, each with its own private en-suite bathroom. The principal suite is a highlight, offering direct balcony access, elegant built-in wardrobes, and a luxurious en-suite with a walk-in rain shower and double vanity. Additional features include a well-designed utility room, a cloakroom, and

plentiful storage throughout the property. Exclusive lift access opens directly into the apartment, ensuring privacy and ease of access. Externally, this property continues to stand apart, offering the only private garage in the complex, alongside allocated parking, guest bays, and a bike shed. Three individual balconies provide ample space to relax or entertain while taking in the ever-changing seascape and renowned sunsets over Totland Bay.

Just a short walk from the beach and esplanade, residents can enjoy the popular Waterfront Restaurant or stroll into Totland village for local amenities. The nearby village of Freshwater offers a broader selection of shops and services, while the historic harbour town of Yarmouth—with its ferry links and sailing opportunities—is only a ten-minute drive away. Combining modern comfort with exceptional style and location, this penthouse is a unique opportunity to enjoy refined coastal living in one of the Isle of Wight's most sought-after settings. Whether as a permanent residence or an indulgent retreat, it offers an exceptional lifestyle by the sea.

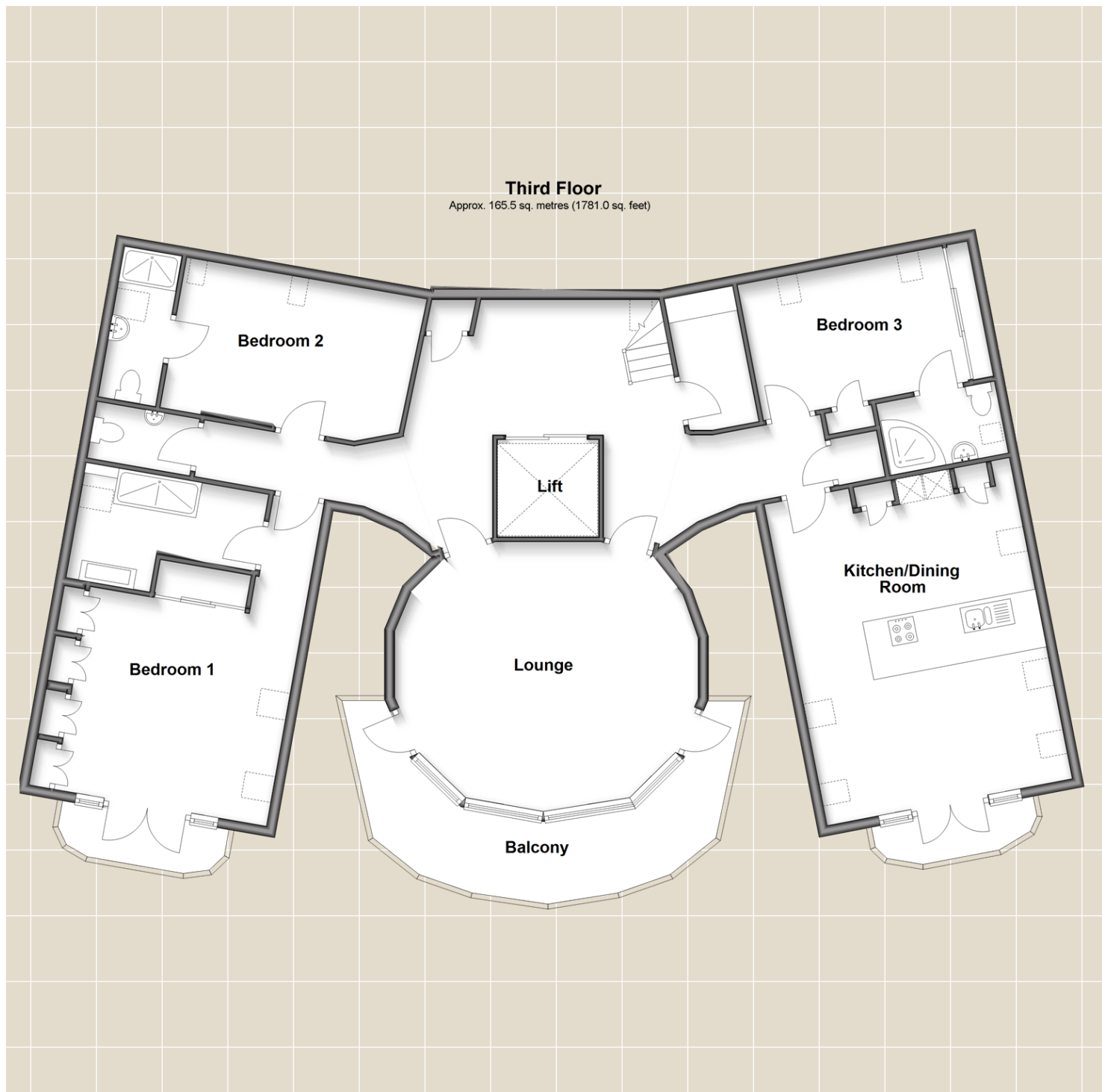
What the owner says...

"Having enjoyed it for many years, I had been searching the Island for some time in order to find a place where we could spend more of our leisure time.

When I found this Penthouse seven years ago, I was overwhelmed with the apartment and its facilities. Then after seeing the views, made an acceptable offer almost immediately.

The apartment has lived up to those early expectations in every way.

Changing circumstances are the reason for selling."



For directions to this property please contact us.

Viewing: Strictly by appointment with Fine & Country's offices in:

Cowes on 01983 520000

14 High Street, Cowes, Isle Of Wight, PO31 7RZ

isleofwight@fineandcountry.com

London office

121 Park Lane, Mayfair, London, W1K 7AG

