



Price

£435,000  
Freehold

Victoria Road, Cowes, Isle of Wight, PO31



Victoria Road, Cowes, Isle of Wight,  
PO31

0.5 miles from West Cowes to Southampton Ferry  
9.2 miles from Fishbourne to Portsmouth Ferry  
12.8 miles from Yarmouth to Lymington Ferry



This stunning new development comprising of three x four storey houses with far reaching sea views, is a unique development of homes ready to be launched to the market.



Choice of two new build properties in a prime Cowes location

One end of terrace house and a mid terrace house

Spread over four floors with sea views to the rear

Ready to move straight into – offered with no onward chain

Ground floor cloakrooms, first floor bathrooms and second floor shower rooms





A stunning new development comprising of three x four storey houses with far reaching sea views, this unique development of homes is ready to be launched to the market.

Built by a local developer these houses have been incredibly well thought out and designed to take advantage of the views and the space that they are able to offer on each level.

All of the houses offer four bedrooms with three bathrooms ideal for a family home. If you are looking to be situated in Cowes with a short distance to Cowes Parade, red jet passenger ferry and amenities then you will definitely want to take a look at this exciting opportunity.

To the rear, these stunning houses offer both an enclosed rear garden and off road, allocated parking which is equally unique for this location.

You could easily have one of these houses as your holiday home and know that you have little to no maintenance for

several years to come.

## What the owner says...

'''

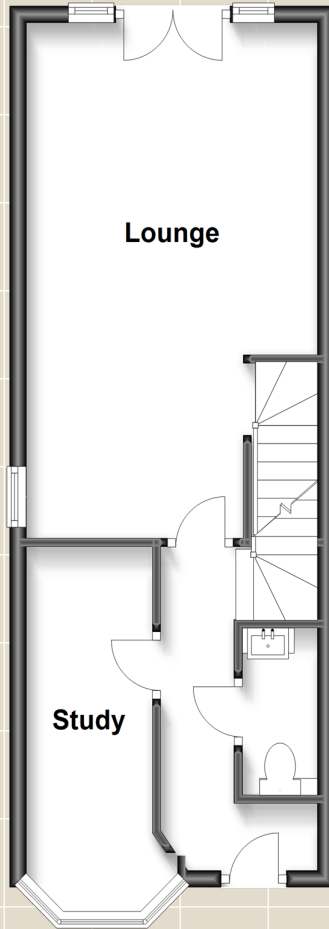
**Lowest Ground Floor**

Approx. 35.9 sq. metres (386.6 sq. feet)



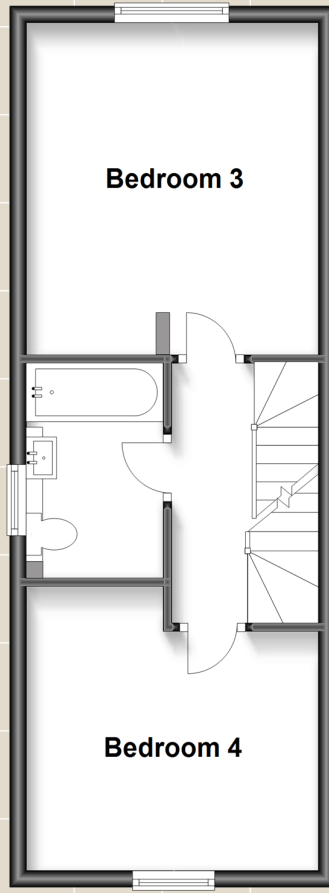
**Ground Floor**

Approx. 36.1 sq. metres (389.1 sq. feet)



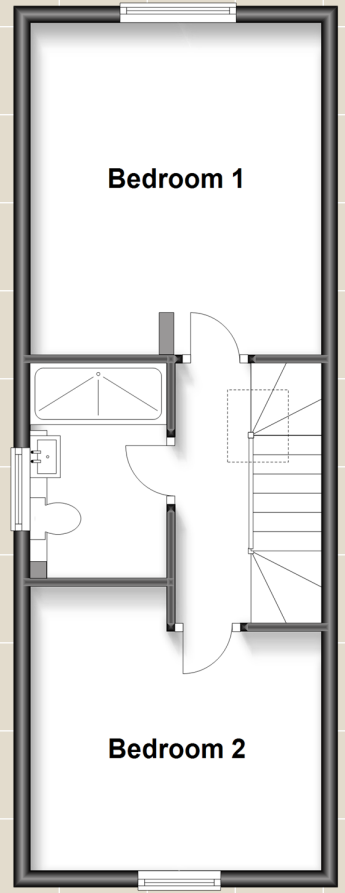
**First Floor**

Approx. 35.9 sq. metres (386.6 sq. feet)



**Second Floor**

Approx. 35.9 sq. metres (386.6 sq. feet)



For directions to this property please contact us.

Viewing: Strictly by appointment with Fine & Country's offices in:

**Cowes on 01983 520000**

14 High Street, Cowes, Isle Of Wight, PO31 7RZ

isleofwight@fineandcountry.com

London office

121 Park Lane, Mayfair, London, W1K 7AG

