



Price

£699,995
Freehold

Newchurch, Isle of Wight, PO36

Newchurch, Isle of Wight, PO36

5.9 miles from Fishbourne to Portsmouth Ferry
8.3 miles from East Cowes to Southampton Ferry
14.8 miles from Yarmouth to Lymington Ferry



This superb, detached property is located within a beautiful village setting and provides beautiful spacious and light rooms which are delightfully modernised to a high standard, with lovely wrap around gardens.



Delightful detached bungalow in a village location

Beautiful setting close to nature reserve and cycle track

Extensively refurbished throughout

Bathroom and separate shower room

Large integral double garage
Impressive modern kitchen dining room





This delightful, four bedroom property is set in generous gardens, in a picturesque village on the cusp of an area of outstanding natural beauty and a nature reserve. Set back from the road with gated entry, this property boasts both a long driveway leading to a garage, as well as a large, gravelled area for additional parking or turning circle for easy manoeuvrability.

Enter into a well-lit, central hallway, that conveniently acts as a divider between the main living areas and the rest of the bungalow. The gorgeous kitchen is the perfect blend of both practical and stylish, with natural stone 'Dekton' countertops and hard wearing vinyl floor tiles – so no need to worry about hot pot and pans on the surface – a double fan oven, induction hob, boiling water tap and all integrated appliances, and with a fabulous island as a real focal point. This opens into a spacious dining area with ample space to comfortably seat a large family around the dining table. From here double doors lead into the sizeable sitting room, giving the flexibility to open up the dining area into the lounge

should more space be required - perhaps for entertaining family and friends or on special occasions. Triple aspect windows here create a lovely, light space and include sliding patio doors to the rear garden.

On the other side of the hallway are three double bedrooms and a further, flexible room that could make a fourth bedroom or a study. Bedrooms one and two benefit from pretty, bay windows and are both an excellent size. There's a spacious bathroom here, with both a bath and separate shower cubicle, as well as an additional shower room and a utility room.

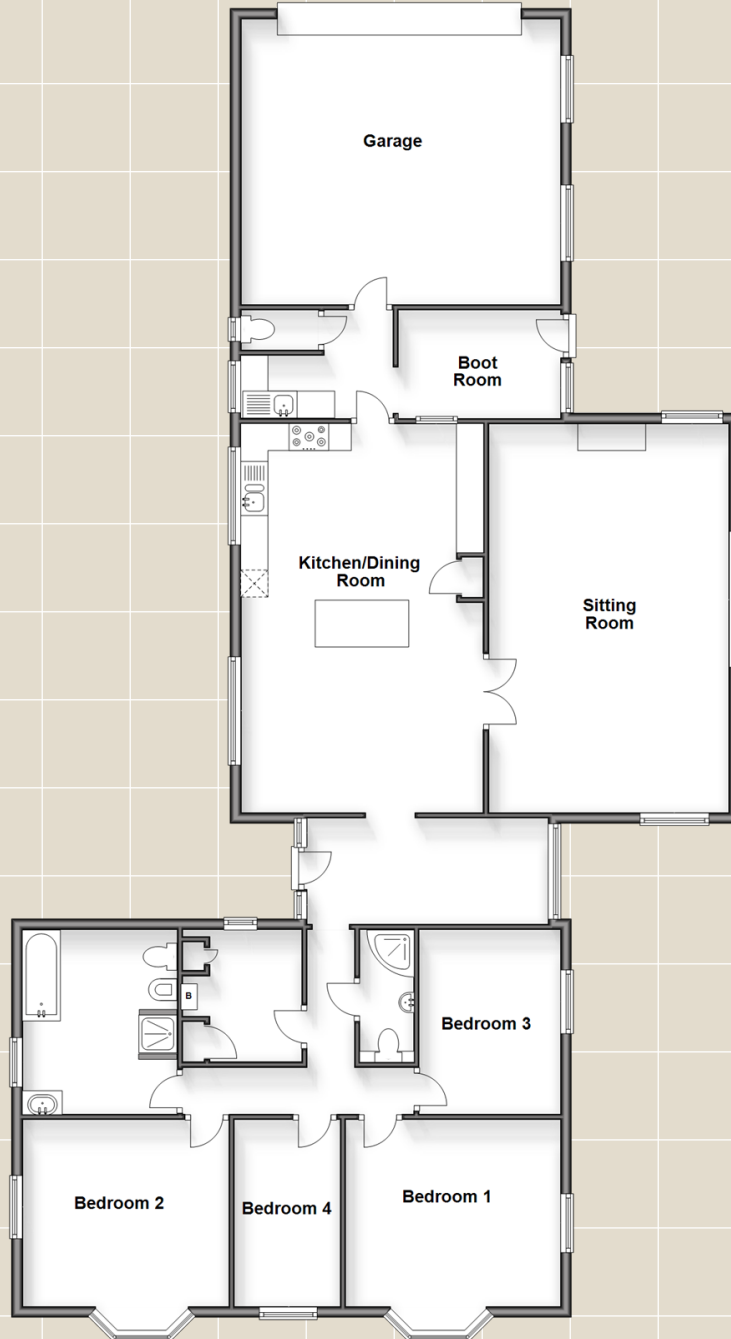
Outside is the wonderful garden that's a delightful combination of manicured lawn, mature plants and trees and a sizeable patio – perfect for entertaining or sitting back and enjoying the red squirrels and local wildlife which venture into the garden. Additionally, there's three garden sheds, all of good size and a greenhouse, and twelve owned solar panels with a storage battery - everything required for the keen gardener and eco-conscious home owner.

What the owner says...

"Newchurch is a lovely village with a small, friendly community and is home to the highly sought after Newchurch Primary school. For dining out, there is a selection of places right on your doorstep, beginning with Peddlers café just a minutes' walk from the property – a delightful little café that's ideally located for nature watching in the surrounding countryside along the river. Another short walk will take you to the award-winning Pointer Inn – a great gastro pub serving quality food and drink. And just a couple of minutes' drive away is the renowned Garlic Farm shop and café where you'll find a treasure trove of local island produce.

There's a mobile post office service that visits the village twice weekly, as well as a convenience store just a few minutes' drive away which includes another post office. And you only need to step outside the property boundary to arrive on the first of countless countryside footpaths in the area."

Ground Floor
Approx. 187.7 sq. metres (2020.0 sq. feet)



For directions to this property please contact us.

Viewing: Strictly by appointment with Fine & Country's offices in:

Cowes on 01983 520000

14 High Street, Cowes, Isle Of Wight, PO31 7RZ

isleofwight@fineandcountry.com

London office

121 Park Lane, Mayfair, London, W1K 7AG

