



Price

£450,000  
Freehold

Victoria Road, Cowes, Isle of Wight,  
PO31



Victoria Road, Cowes, Isle of Wight,  
PO31

0.5 miles from West Cowes to Southampton Ferry

9.2 miles from Fishbourne to Portsmouth Ferry

12.8 miles from Yarmouth to Lymington Ferry



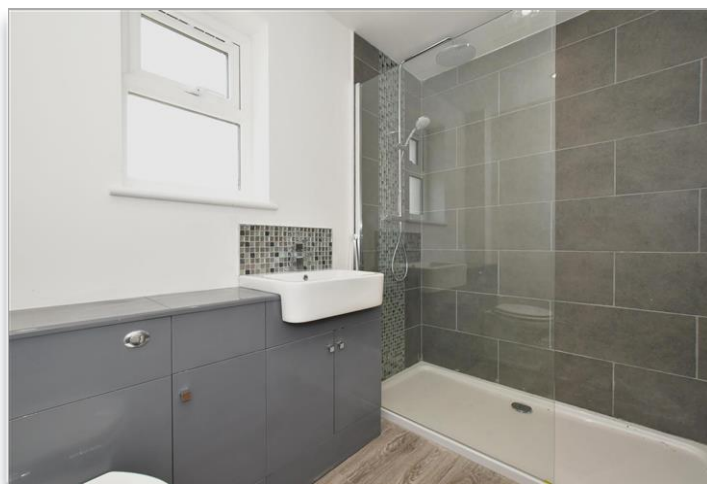
A mid terrace home offered in a  
stunning new development comprising  
that comprises of three x four storey  
houses with far reaching sea views.



A mid terrace new build property in a  
prime Cowes location

Spread over four floors with sea views  
to the rear

Ready to move straight into – offered  
with no onward chain



Ground floor cloakroom, first floor  
bathroom and second floor shower  
room

Walking distance to town amenities,  
local bus routes and ferry connections





This stunning new development comprises of three x four storey houses with far reaching sea views, and on offer is this beautifully presented mid terrace house ready to move straight into.

Built by a local developer these houses have been incredibly well thought out and designed to take advantage of the views and the space that they are able to offer on each level.

All of the houses offer four bedrooms with three bathrooms ideal for a family home. If you are looking to be situated in Cowes with a short distance to Cowes Parade, red jet passenger ferry and amenities then you will definitely want to take a look at this exciting opportunity.

To the rear, these stunning houses offer both an enclosed rear garden and off road, allocated parking which is equally unique for this location.

You could easily have one of these houses as your holiday home and know that you have little to no maintenance for

several years to come.

## What the owner says...

'''



For directions to this property please contact us.

Viewing: Strictly by appointment with Fine & Country's offices in:

**Cowes on 01983 520000**

14 High Street, Cowes, Isle Of Wight, PO31 7RZ

isleofwight@fineandcountry.com

London office

121 Park Lane, Mayfair, London, W1K 7AG

