



## BRONDESBURY VILLAS, NW6

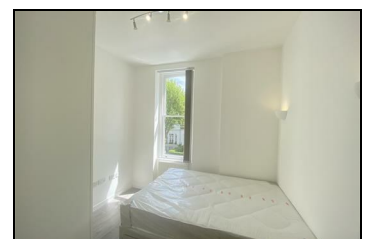
### £1,650 PER CALENDAR MONTH

A 1 double Bedroom apartment arranged on the first floor of this attractive Victorian property. Comprising of contemporary open plan reception / kitchen, wood flooring to most of the property, modern bathroom and communal garden. Part furnished.

Available: 1st Week March 2026

Location: Brondesbury Villas is a sought after residential tree lined street within 10 mins walk to picturesque Queens Park and tube/BR station (Bakerloo line), numerous bus routes with excellent road access into Maida Vale, St. Johns Wood and Central London via the A5 Edgware Road.

- 1 Double Bedroom
- Open Plan Reception / Kitchen
- Modern Bathroom
- Wood Flooring
- First Floor Flat
- Communal Garden



Energy Efficiency Rating		Environmental Impact (CO <sub>2</sub> ) Rating	
Current	Potential	Current	Potential
Energy Efficiency Rating: C4 (Current), C2 (Potential)		Environmental Impact (CO <sub>2</sub> ) Rating: C4 (Current), C2 (Potential)	
England & Wales		England & Wales	