



## BRAMFORD COURT, SOUTHGATE, N14

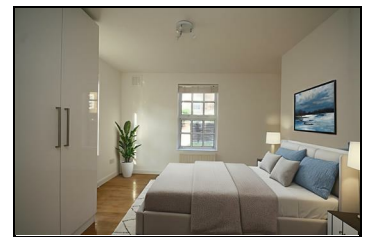
**£2,500 PER CALENDAR MONTH**

A well presented 3 bedroom detached bungalow with private garden. The bright and spacious accommodation includes wood flooring to most of the property, contemporary eat in kitchen providing access to the garden and modern bathroom/wc. Unfurnished.

Available: Now

Location: Very conveniently situated, the property is within easy reach of Southgate tube station (Piccadilly Line) including numerous bus routes at Southgate station. Moments walk to multiple shops, eateries and pubs on Chase Side. Within catchment of Ashmole Academy and Ashmole primary school.

- 3 Bedrooms
- Modern Kitchen / Diner
- Wood Flooring
- Detached Bungalow
- Newly Decorated
- Convenient Location



Energy Efficiency Rating		Environmental Impact (CO <sub>2</sub> ) Rating	
Current	Potential	Current	Potential
87	87	87	87
A	A	A	A
B	B	B	B
C	C	C	C
D	D	D	D
E	E	E	E
F	F	F	F
G	G	G	G