



HIGH ROAD, ROMFORD, RM6

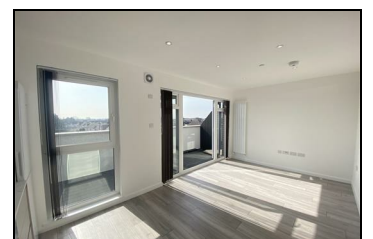
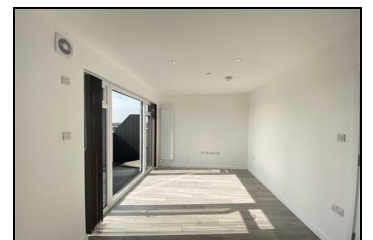
£1,350 PER MONTH

A 1 double bedroom flat arranged on the third floor. These spacious and luxurious apartment comprises of contemporary reception / kitchen with 'Bosch' appliances. Engineered wood flooring to most of the rooms. Private Balcony with panoramic views. Fitted wardrobes to bedroom.

Available: 5th May 2025

Location: The property is conveniently located with an array of shops on the High Road itself. Excellent commute to Central London (approx 40 minutes to Bond Street / Liverpool Street and) from Chadwell Heath Station (Elizabeth line) which is within walking distance. Bus routes to Stratford and Seven Kings.

- 1 Double Bedroom
- Wood Flooring
- Modern Open Plan Rec / Kit
- Modern Bathroom
- Private Balcony



Energy Efficiency Rating		Environmental Impact (CO ₂) Rating	
Current	Potential	Current	Potential
<p>High energy efficiency - lower energy costs</p> <p>Low energy efficiency - higher energy costs</p>		<p>Low environmental impact - lower CO₂ emissions</p> <p>High environmental impact - higher CO₂ emissions</p>	
England & Wales		England & Wales	