



ALBURY GROVE ROAD, WALTHAM CROSS, EN8

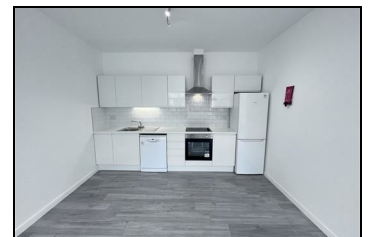
£1,300 PER MONTH

A newly decorated 2 double bedroom apartment set on the first floor. Featuring a spacious open plan reception / kitchen (fully fitted modern high gloss white units with a compliment of Bosch appliances), 2 bathroom and double glazed windows. Unfurnished.

Available: Immediately.

Location: The property is conveniently located in the heart of Cheshunt Town Centre with good transport and ample shopping facilities. An excellent commute to Central London (30 minutes into Liverpool Street) from Cheshunt Overground which is approximately 10 minutes walk, Short drive away from A10 and M25. Grundy Park and sports grounds are also close by.

- 2 Double Bedrooms
- Open Plan Reception / Kitchen
- 2 Bathrooms
- Newly Decorated
- Wood Flooring



Energy Efficiency Rating		Environmental Impact (CO ₂) Rating	
Current	Potential	Current	Potential
Energy A	Energy B	Env A	Env B
Energy B	Energy C	Env B	Env C
Energy C	Energy D	Env C	Env D
Energy D	Energy E	Env D	Env E
Energy E	Energy F	Env E	Env F
Energy F	Energy G	Env F	Env G
Energy G	Energy H	Env G	Env H
Energy H	Energy I	Env H	Env I

Energy A: Most energy efficient - Higher saving costs
 Energy I: Not energy efficient - Higher saving costs
 Env A: Best environmental impact - Lower CO₂ emissions
 Env I: Worst environmental impact - Higher CO₂ emissions

England & Wales
 EU Directive 2002/91/EC