



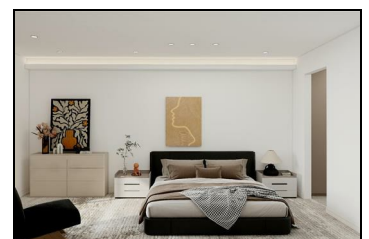
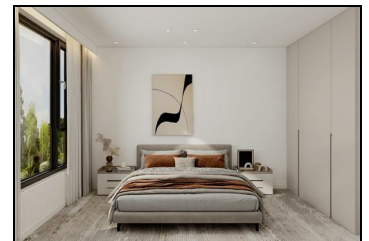
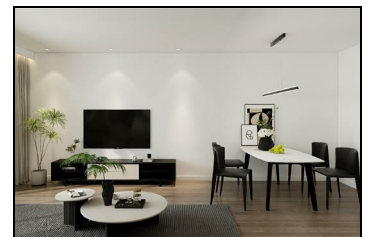
PENRHYN CRESCENT, WALTHAMSTOW, E17
GUIDE PRICE £850,000 FREEHOLD

COMING SOON! A stunning new development of just 3 luxury houses with accommodation arranged over 3 floors. These contemporary houses boast 4 bedrooms, 2 bathrooms plus cloak room making it the perfect space for a growing family. The reception rooms give direct access to a southerly aspect private garden. The houses include contemporary kitchens and a 10-year London build warranty.

Situated in a private residential location, you'll find local shops on Chingford Road just a stone's throw away. Additionally, the property is in close proximity to the A406 North Circular Road with various schools within walking distance.

To register your interest, please call on of the Harris and Company team

- New Build
- Private Garden
- 4 Bedrooms
- New Build Warranty
- Arranged Over 3 Floors



Energy Efficiency Rating		Environmental Impact (CO ₂) Rating	
Current	Potential	Current	Potential
Energy Rating: G	Energy Rating: C	Env. Impact Rating: G	Env. Impact Rating: C
<small>High energy efficient - Higher saving costs</small>		<small>High environmental friendliness - Lower CO₂ emissions</small>	
<small>England & Wales</small>		<small>England & Wales</small>	