



National  
Trust

**To Let**  
**15 East Street, Corfe Castle**  
**£1200 per calendar month**



A two bedroom period cottage located in the historic village of Corfe Castle on the National Trust's Purbeck Estate.

Available from May 2024

**For more information and an application to view please contact Sally Panton**  
**Email: [sally.panton@nationaltrust.org.uk](mailto:sally.panton@nationaltrust.org.uk)**

Dedicated viewing day will be held on the week commencing 15<sup>th</sup> April 2024

Chair: Rene Oliveri  
Regional Director: Rebecca Director

[www.nationaltrust.org.uk/tenants](http://www.nationaltrust.org.uk/tenants)

[www.nationaltrust.org.uk/rightmove](http://www.nationaltrust.org.uk/rightmove)

Registered office:  
Heelis, Kemble Drive, Swindon, Wiltshire SN2 2NA  
Registered charity number 205846

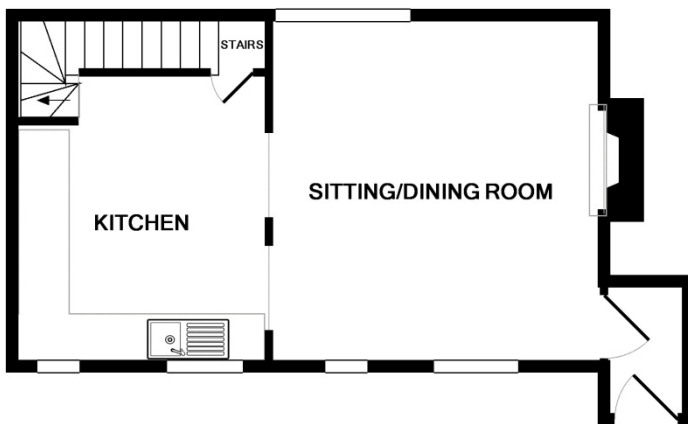
## Floor Plan – 15 East St, Corfe Castle

These particulars are issued for guidance purposes only. They are prepared and issued in good faith and are intended to give a fair summary of the property.

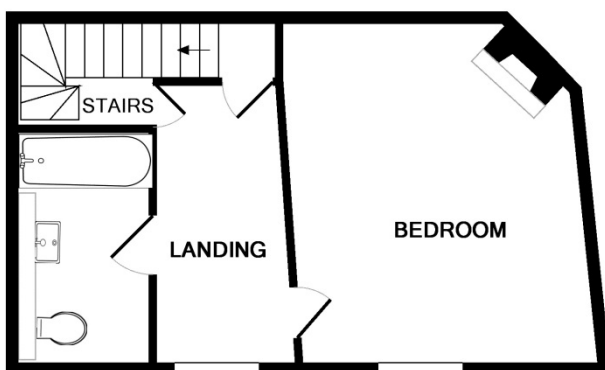
Any description or information given should not be relied upon as a statement or representation of fact.

Photographs show only certain parts of the property at the time they were taken. Any areas, measurements or distances given are only approximate.

Prospective applicants must satisfy themselves by inspection as to these and other relevant details.



GROUND FLOOR  
APPROX. FLOOR  
AREA 339 SQ.FT.  
(31.5 SQ.M.)



1ST FLOOR  
APPROX. FLOOR  
AREA 303 SQ.FT.  
(28.1 SQ.M.)



2ND FLOOR  
APPROX. FLOOR  
AREA 302 SQ.FT.  
(28.1 SQ.M.)

TOTAL APPROX. FLOOR AREA 943 SQ.FT. (87.6 SQ.M.)

Whilst every attempt has been made to ensure the accuracy of the floor plan contained here, measurements of doors, windows, rooms and any other items are approximate and no responsibility is taken for any error, omission, or mis-statement. This plan is for illustrative purposes only and should be used as such by any prospective purchaser. The services, systems and appliances shown have not been tested and no guarantee as to their operability or efficiency can be given

Made with Metropix ©2016