

TO LET



Hill Lane, Shirley

2 Bedrooms, 1 Bathroom, Flat

£1,200 pcm



Hill Lane, Shirley

Flat,
2 bedroom, 1 bathroom

£1,200 pcm

Date available: 29th January 2026

Deposit: £1,384.61

Unfurnished

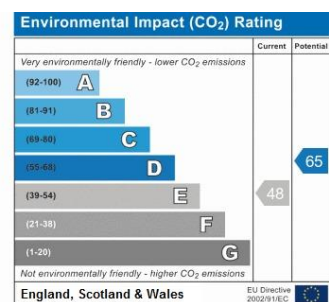
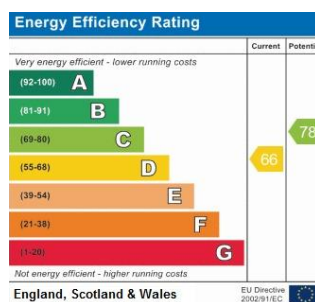
Council Tax band: A

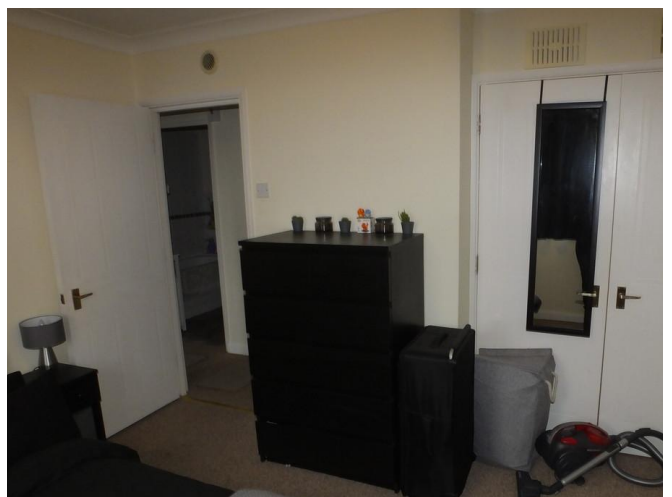
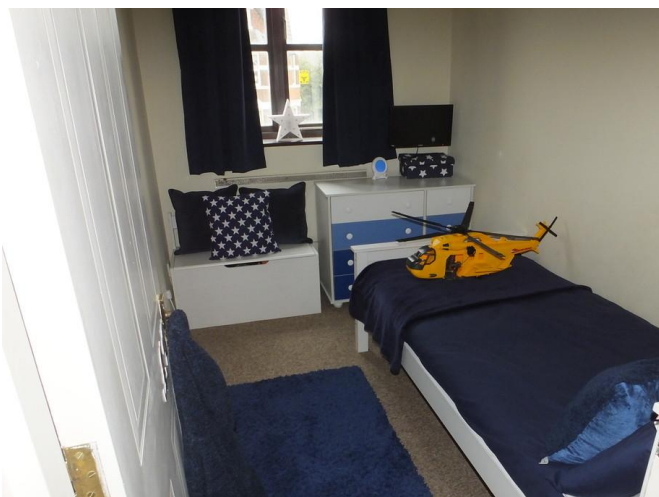
- Available 29th January 2026
- Deposit £1,384.61
- Close to City Centre
- Good travel links M27, M3 and train
- White goods included (Washing Machine/ Fridge Freezer)
- Off Road Parking
- Modern Fitted Kitchen

TWO BEDROOM PROPERTY EPC D

Southampton Tax band A

Deposit





Martin & Co Southampton City **02380 988881**
46 London Road • • Southampton • SO15 2AH
T: 02380 988881 • E: southamptoncity@martinco.com <http://www.martinco.com>



Accuracy: References to the Tenure of a Property are based on information supplied by the Seller. The Agent has not had sight of the title documents. A Buyer is advised to obtain verification from their Solicitor. Items shown in photographs including but not limited to carpets, fixtures and fittings are not included unless specifically mentioned within the sales particulars. They may however be available by separate negotiation. Buyers must check the availability of any property and make an appointment to view before embarking on any journey to see a property. No person in the employment of the agent has any authority to make any representation about the property, and accordingly any information given is entirely without responsibility on the part of the agents, sellers(s) or lessors(s). Any property particulars are not an offer or contract, nor for part of one. **Sonic / laser Tape:** Measurements taken using a sonic / laser tape measure may be subject to a small margin of error. **All Measurements:** All Measurements are Approximate. **Services Not tested:** The Agent has not tested any apparatus, equipment, fixtures and fittings or services and so cannot verify that they are in working order or fit for the purpose. A Buyer is advised to obtain verification from their Solicitor or Surveyor.