

TO LET



Byron Road, Eastleigh

1 Bedroom, 1 Bathroom, Ground floor

£850 pcm



Byron Road, Eastleigh

Ground floor,
1 bedroom, 1 bathroom

£850 pcm

Date available: Available Now
Deposit: £980.76

Council Tax band: A

- Available 2nd June 2025
- Rent £850pcm
- Deposit £980.76
- Communal entrance
- Hallway
- Allocated Parking
- Close to shops and amenities

COMMUNAL ENTRANCE HALL locked door

HALLWAY solid wooden door, laminate flooring, storage cupboard and intercom.

SITTING ROOM 13'0" x 9'2" laminate flooring, electric wall mounted fire. Ceiling lights. Opening to:-

KITCHEN 7'2" x 6'5" High gloss modern units, 1½ bowl composite sink with mixer tap, electric hob and oven with stainless steel hood over, washing machine and intergrated fridge. Cupboard housing hot water tank, laminate flooring.

BEDROOM 10'8" x 7'11" Laminate flooring, double built ion wardrobe.

BATHROOM 6'10" x 5'0" White suite comprising of panel fronted bath with electric shower over, low level

Energy Efficiency Rating		
	Current	Potential
Very energy efficient - lower running costs		
(92+) A		
(81-91) B		
(69-80) C	75	75
(55-68) D		
(39-54) E		
(21-38) F		



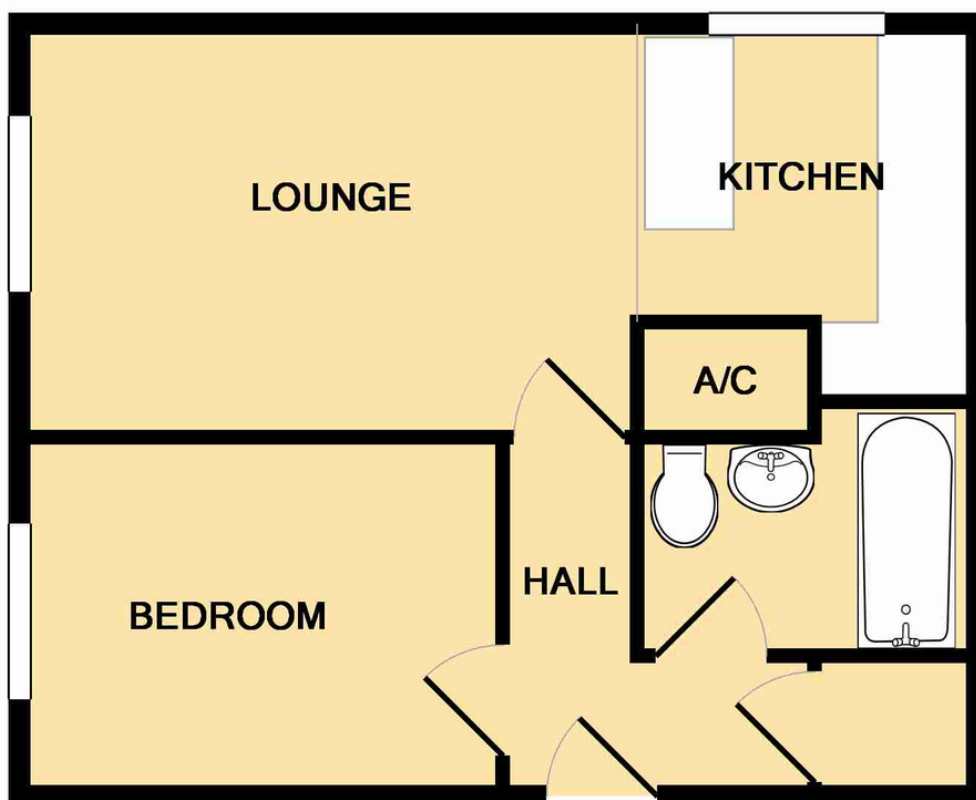
wc, wash basin and heated towel rail.

OUTSIDE Communal garden with drying area,
allocated parking and visitor parking

* DOUBLE GLAZED

LOCAL AUTHORITY INFORMATION

EASTLEIGH BOROUGH COUNCIL TAX BAND A



Whilst every attempt has been made to ensure the accuracy of the floor plan contained here, measurements of doors, windows, rooms and any other items are approximate and no responsibility is taken for any error, omission, or mis-statement. This plan is for illustrative purposes only and should be used as such by any prospective purchaser. The services, systems and appliances shown have not been tested and no guarantee as to their operability or efficiency can be given
Made with Metropix ©2012

Martin & Co Southampton City **02380 988881**
46 London Road • Southampton • SO15 2AH
T: 02380 988881 • E: southamptoncity@martinco.com <http://www.martinco.com>



Accuracy: References to the Tenure of a Property are based on information supplied by the Seller. The Agent has not had sight of the title documents. A Buyer is advised to obtain verification from their Solicitor. Items shown in photographs including but not limited to carpets, fixtures and fittings are not included unless specifically mentioned within the sales particulars. They may however be available by separate negotiation. Buyers must check the availability of any property and make an appointment to view before embarking on any journey to see a property. No person in the employment of the agent has any authority to make any representation about the property, and accordingly any information given is entirely without responsibility on the part of the agents, sellers(s) or lessors(s). Any property particulars are not an offer or contract, nor for part of one. **Sonic / laser Tape:** Measurements taken using a sonic / laser tape measure may be subject to a small margin of error. **All Measurements:** All Measurements are Approximate. **Services Not tested:** The Agent has not tested any apparatus, equipment, fixtures and fittings or services and so cannot verify that they are in working order or fit for the purpose. A Buyer is advised to obtain verification from their Solicitor or Surveyor.