

TO LET



Hursley Road, Chandlers Ford

2 Bedrooms, 1 Bathroom, Apartment

£1,150 pcm


MARTIN&CO



Hursley Road, Chandlers Ford

Apartment,
2 bedroom, 1 bathroom

£1,150 pcm

Date available: 21st November 2024

Deposit: £1,326.92

Unfurnished

Council Tax band: C

- Available 21st November 2024
- Deposit £1,326.92
- Eastleigh Borough Council Tax Band C
- Not suitable for pets
- Close to train and motorway links
- Close to shops and local amenities
- Feature fireplace

SECURITY COMMUNAL ENTRANCE HALL STAIRS TO TOP FLOOR

HALLWAY - security phone, airing cupboard with hot water tank, slatted shelves. Loft access

SITTING ROOM, 13'3" x 12'5" electric fire in featured surround.

KITCHEN 9'8" x 7'8" excellent range of wall and floor units, composite sink with mixer tap, electric hob and built in electric oven, washer/dryer, upright fridge/freezer.

BEDROOM 11'9" x 11'7" MAXS

BEDROOM 2 10'2" X 8'7"

BATHROOM white suite comprising panel fronted bath with electric shower over with shower curtain, fully tiled surrounds. Vanity unit, low level wc.

Double glazed

Electric storage heating

Energy Efficiency Rating		Current	Potential	Environmental (CO ₂) Impact Rating		Current	Potential
Very energy efficient - lower running costs				Very environmentally friendly - lower CO ₂ emissions			
(92-100) A				(92-100) A			
(81-91) B				(81-91) B			
(69-80) C				(69-80) C			
(55-68) D				(55-68) D	63	64	
(39-54) E				(39-54) E			
(21-38) F				(21-38) F			
(1-20) G				(1-20) G			
Not energy efficient - higher running costs				Not environmentally friendly - higher CO ₂ emissions			
England & Wales		69	71	England & Wales			
EU Directive 2002/91/EC				EU Directive 2002/91/EC			

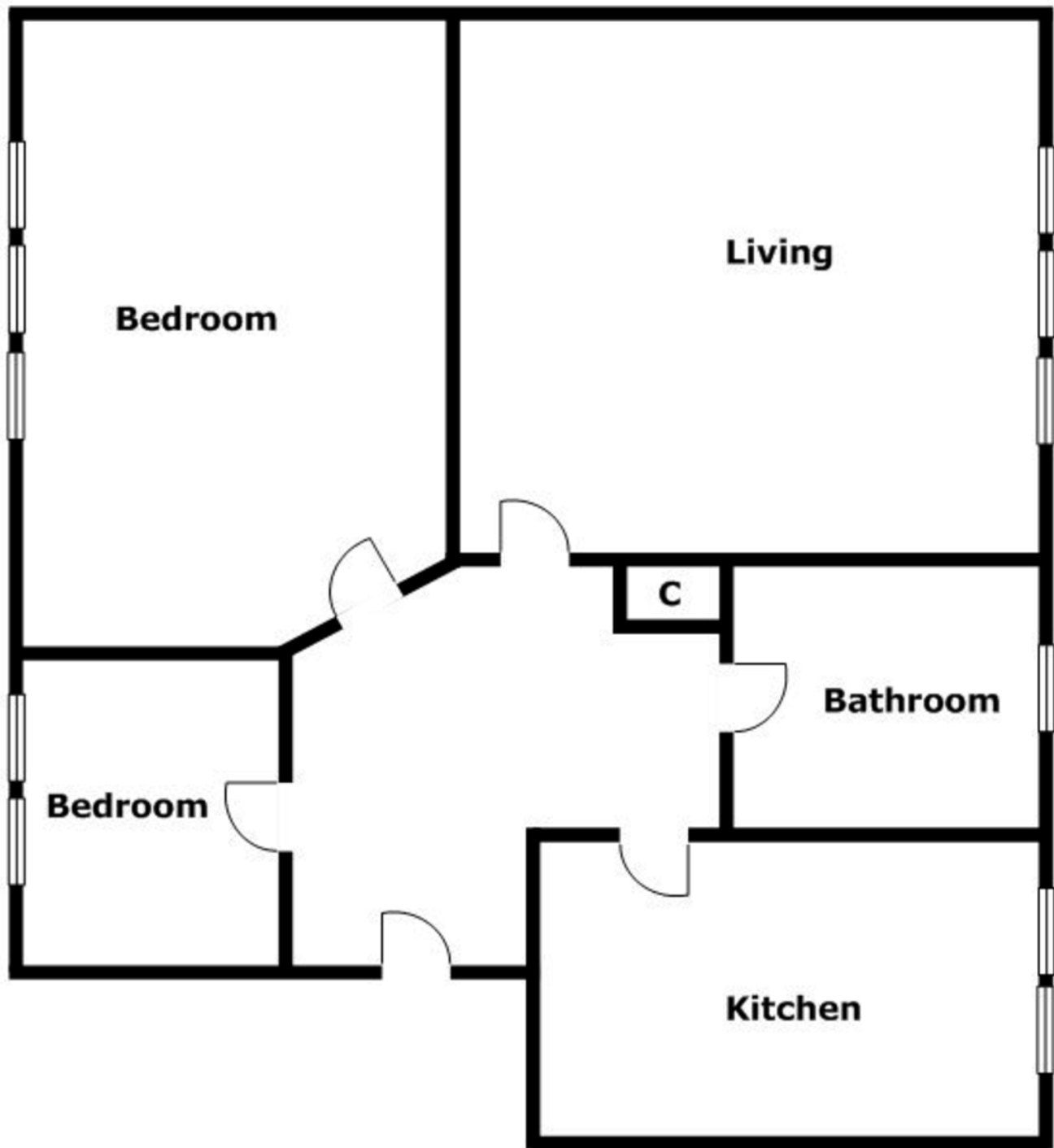


Off road parking, communal gardens

Deposit £1326.92

EASTLEIGH BOROUGH COUNCIL Tax Band C, not suitable for Pets

Energy Performance Rating C



Martin & Co Chandler

46 London Road • Southampton • SO15 2AH

T: 02380 390012 • E: chandlersford@martinco.com <http://www.martinco.com>

02380 390012



Accuracy: References to the Tenure of a Property are based on information supplied by the Seller. The Agent has not had sight of the title documents. A Buyer is advised to obtain verification from their Solicitor. Items shown in photographs including but not limited to carpets, fixtures and fittings are not included unless specifically mentioned within the sales particulars. They may however be available by separate negotiation. Buyers must check the availability of any property and make an appointment to view before embarking on any journey to see a property. No person in the employment of the agent has any authority to make any representation about the property, and accordingly any information given is entirely without responsibility on the part of the agents, sellers(s) or lessors(s). Any property particulars are not an offer or contract, nor for part of one. **Sonic / laser Tape:** Measurements taken using a sonic / laser tape measure may be subject to a small margin of error. **All Measurements:** All Measurements are Approximate. **Services Not tested:** The Agent has not tested any apparatus, equipment, fixtures and fittings or services and so cannot verify that they are in working order or fit for the purpose. A Buyer is advised to obtain verification from their Solicitor or Surveyor.