

**TO LET**



## **Chandler's Ford, Eastleigh**

**2 Bedrooms, 2 Bathroom, Apartment**

**£1,150 pcm**



## Chandler's Ford, Eastleigh

2 Bedrooms, 2 Bathroom

£1,150 pcm

Date available: 30th September 2024

Deposit: £1,326.92

Unfurnished

Council Tax band: C

- Available 30th September 2024
- Deposit £1,326.92
- First Floor
- EPC Rate D. Tax band EBC D
- White goods included
- Lift
- Allocated parking 2 spaces

A Two bedroom apartment with ensuite bathroom, modern fittings , gas central heating and parking.

ENTRANCE Cupboard for storage, doors to all principle rooms.

LOUNGE 14'3" x 9'5" Juliet balcony to the rear aspect, space for sitting and dining.

KITCHEN 9'5" x 8'0" Range of wall and base level units, fitted fridge/freezer, cooker and hob, space for washing machine, wall mounted 'Vaillant' boiler, sink with drainer.

MASTER BEDROOM 12'1" x 12'1" Window to the rear aspect, built in double wardrobe, door to the ensuite.

ENSUITE BATHROOM 8'9" x 7'11" Half tiled with panel enclosed bath, W.C. and wash hand basin.

BEDROOM 2 8'9" x 7'11" Window to the rear aspect, built in shingle wardrobe.

SHOWER ROOM Fitted corner shower unit, W.C. wash







hand basin.

OUTSIDE The property provides a communal garden to the rear.

PARKING Allocated parking for two cars and a carport

#### OTHER INFORMATION

Telephone points:- Yes

TV points: Yes

Sky points Available

Smoke alarms Yes

Security Alarm No

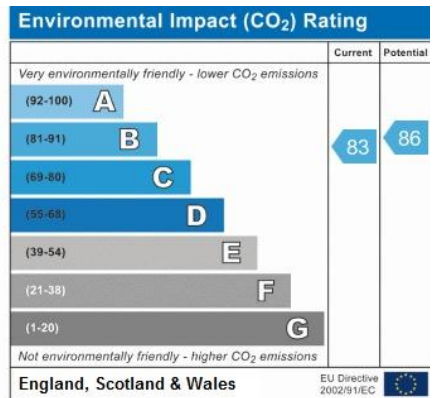
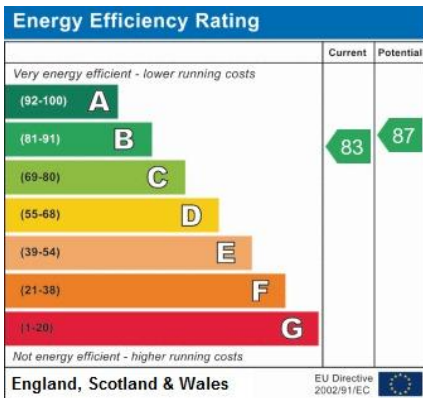
\* GAS CENTRAL HEATING

\* DOUBLE GLAZED

#### LOCAL AUTHORITY INFORMATION

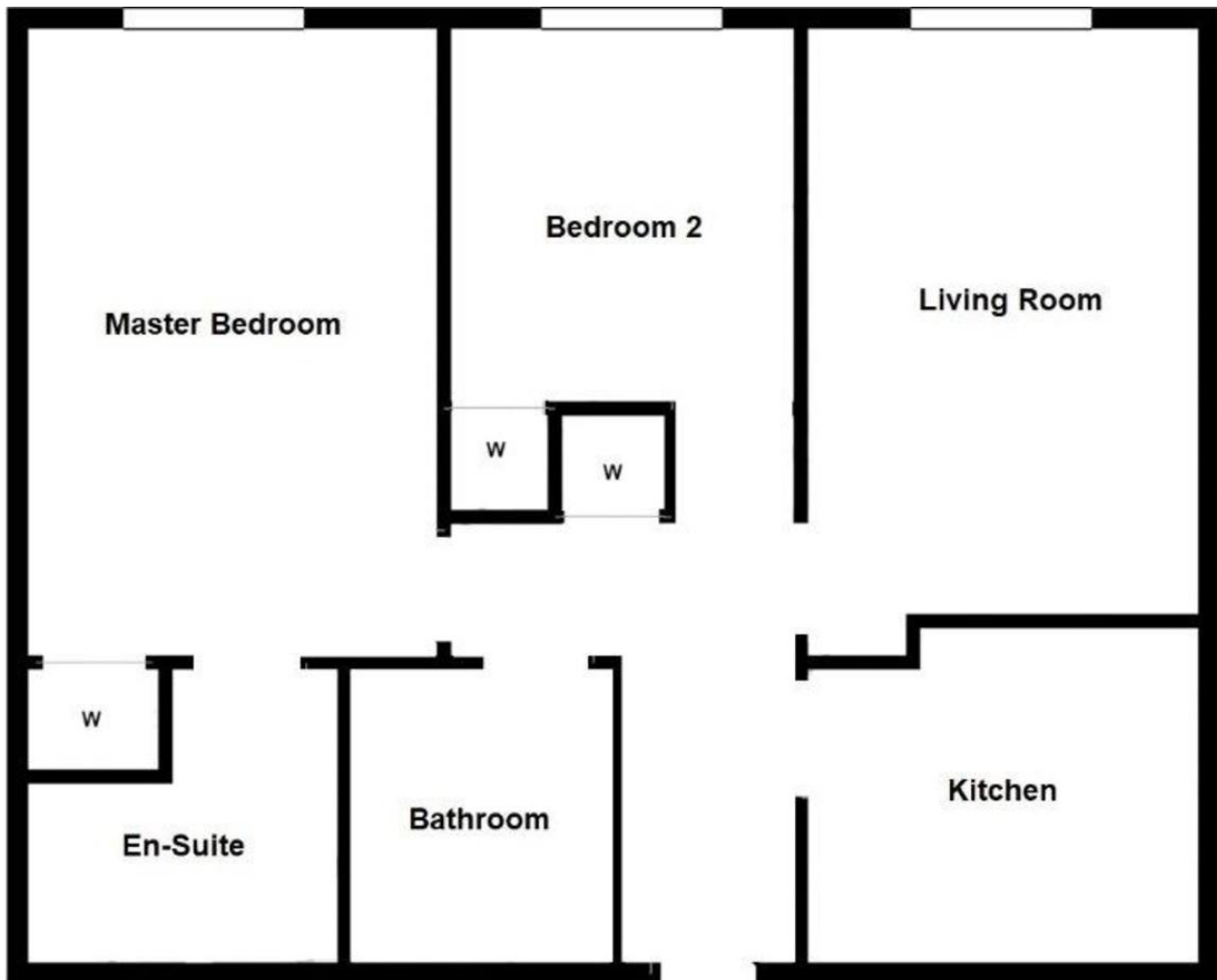
EASTLEIGH BOROUGH COUNCIL TAX BAND C











Whilst every attempt has been made to ensure the accuracy of the floor plan contained here, measurements of doors, windows, rooms and any other items are approximate and no responsibility is taken for any error, omission, or mis-statement. This plan is for illustrative purposes only and should be used as such by any prospective purchaser. The services, systems and appliances shown have not been tested and no guarantee as to their operability or efficiency can be given

## Martin & Co Chandler

46 London Road • Southampton • SO15 2AH

T: 02380 390012 • E: [chandlerford@martinco.com](mailto:chandlerford@martinco.com) <http://www.martinco.com>

# 02380 390012



**Accuracy:** References to the Tenure of a Property are based on information supplied by the Seller. The Agent has not had sight of the title documents. A Buyer is advised to obtain verification from their Solicitor. Items shown in photographs including but not limited to carpets, fixtures and fittings are not included unless specifically mentioned within the sales particulars. They may however be available by separate negotiation. Buyers must check the availability of any property and make an appointment to view before embarking on any journey to see a property. No person in the employment of the agent has any authority to make any representation about the property, and accordingly any information given is entirely without responsibility on the part of the agents, sellers(s) or lessors(s). Any property particulars are not an offer or contract, nor form part of one. **Sonic / laser Tape:** Measurements taken using a sonic / laser tape measure may be subject to a small margin of error. **All Measurements:** All Measurements are Approximate. **Services Not tested:** The Agent has not tested any apparatus, equipment, fixtures and fittings or services and so cannot verify that they are in working order or fit for the purpose. A Buyer is advised to obtain verification from their Solicitor or Surveyor.