

FOR SALE



Cranbourne Park, Hedge End

2 Bedrooms, 1 Bathroom, Mid Terraced House

Fixed Price £260,000


MARTIN&CO



Cranbourne Park, Hedge End

2 Bedrooms, 1 Bathroom

Fixed Price £260,000

- 2 Bedroom Terraced home
- Spacious lounge
- Kitchen/diner
- Modern bathroom
- Rear access to garage



Martin & Co are pleased to present this well presented, 2 bedroom mid-terrace, 2 bedroom house in popular Cranbourne Park, Hedge End.

The front garden is laid to lawn with a pathway to the front door.

LOUNGE 4.21m x 3.81m Neutral décor with carpet, window with front aspect, stairs leading to first floor.

KITCHEN 3.50m x 4.24m Good range of wall and base units, Stainless steel sink and drainer over looking window to rear. Gas hob with integrated electric oven and grill.

DINING AREA 3.30m x 2.20m This clever extension provides space for wall and base cupboards offering more storage, it can be used for a utility area or dining table and chairs. It has a large window which provides lots of light into the family room with a door to the rear garden.

STAIRS AND LANDING. Neutral décor and carpets, loft access.

BEDROOM 1 4.22m x 3.64m. Double room with window to front aspect. Fitted wardrobe, Tv point.

BEDROOM 2 2.87m x 2.28m Neutral décor, window to rear aspect with fitted wardrobe.

BATHROOM 2.22m x 1.84m. White suite comprising hand basin with vanity cupboard, low level WC, panelled bath and over bath thermostatic shower.

OUTSIDE Garden – patio with rear access to road and Garage.

Allocated parking



OTHER INFORMATION.

Telephone points: Yes

Smoke alarms Yes

Security Alarm No

Broadband - subject to connection

GAS CENTRAL HEATING

DOUBLE GLAZED

LOCAL AUTHORITY INFORMATION

EASTLEIGH BOROUGH COUNCIL TAX BAND B

ENERGY PERFORMANCE BAND RATE C

TENURE

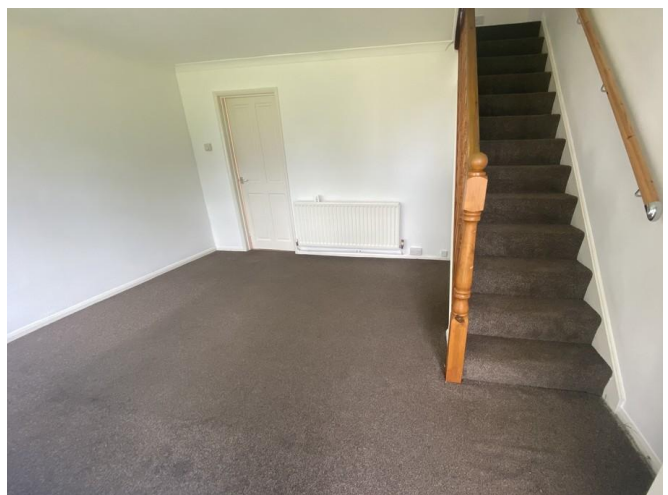
FREEHOLD

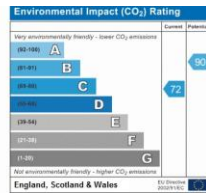
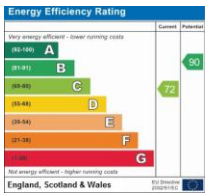
School Catchment for...

Kings Copse Primary

Wildern Senior school

Deer Park







Martin & Co Southampton City

46 London Road • • Southampton • SO15 2AH
T: 02380 988881 • E: southamptoncity@martinco.com

02380 988881

<http://www.martinco.com>



Accuracy: References to the Tenure of a Property are based on information supplied by the Seller. The Agent has not had sight of the title documents. A Buyer is advised to obtain verification from their Solicitor. Items shown in photographs including but not limited to carpets, fixtures and fittings are not included unless specifically mentioned within the sales particulars. They may however be available by separate negotiation. Buyers must check the availability of any property and make an appointment to view before embarking on any journey to see a property. No person in the employment of the agent has any authority to make any representation about the property, and accordingly any information given is entirely without responsibility on the part of the agents, sellers(s) or lessors(s). Any property particulars are not an offer or contract, nor for part of one. **Sonic / laser Tape:** Measurements taken using a sonic / laser tape measure may be subject to a small margin of error. **All Measurements:** All Measurements are Approximate. **Services Not tested:** The Agent has not tested any apparatus, equipment, fixtures and fittings or services and so cannot verify that they are in working order or fit for the purpose. A Buyer is advised to obtain verification from their Solicitor or Surveyor.