



GOLDRINGS ROAD

Oxshott, KT22



A FABULOUS DETACHED FAMILY HOME

Built in 2012 and is ideally located close to
Oxshott village and the local mainline train station
on a popular road.



6



5



5



EPC

B

Local Authority: Elmbridge Borough Council

Council Tax band: H

Tenure: Freehold



DESCRIPTION

The house extends to just over 5,600 sq ft and is arranged over two floors. The ground floor offers a spacious entrance hall, which in turn leads to all principal reception rooms. These include the large study, sitting room, drawing room with log burner and a stunning family room which opens into the bespoke kitchen and dining area. A vaulted ceiling here creates a wonderful sense of space and light, while a utility room is conveniently located just off the kitchen.

The ground floor also features an integral double garage, with a self-contained one bedroom annex situated above. Complete with its own living room and bathroom, this versatile space is ideal for guests, accommodating family or any other use to suit your needs!

The first floor offers a luxury principal bedroom suite with double-height ceilings, a dressing room and an en suite bathroom with a bath and separate walk-in shower, and four additional bedrooms, two of which have en suites and a family bathroom.

Outside, the property has courtyard parking for several cars and a double garage. Mature gardens surround the property and extend to just under 0.75 acres.





LOCATION

The commuter transport links are excellent - a 37-minute train journey from Oxshott mainline station takes you to London Waterloo, whilst the A3 and M25 nearby give easy road access both to central London, the wider motorway network, Heathrow Airport (about 18 miles) and Gatwick Airport (about 22 miles).

A selection of shops and amenities are available locally in and around Oxshott, Cobham & Esher, with larger shopping centres at Kingston (about 7 miles) and Guildford (about 14 miles). There are excellent sporting facilities in the area, with several golf clubs as well as the Oxshott Village Sports Club.

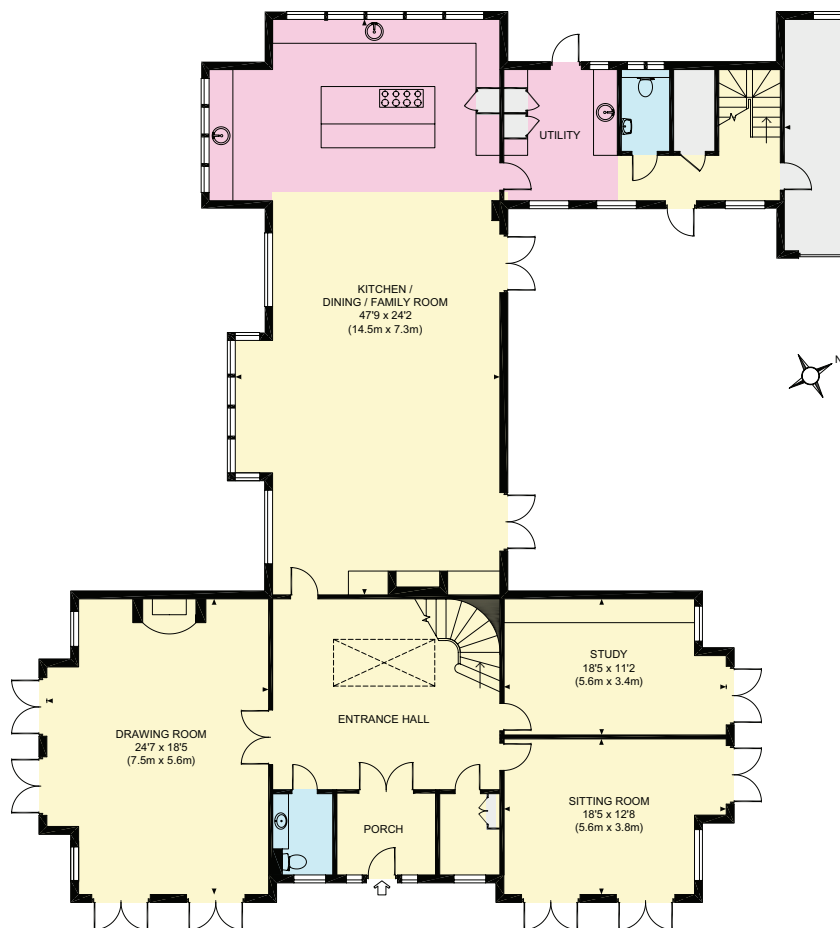
In the wider area, racing is available at Ascot, Windsor, Kempton Park and Sandown. Oxshott Heath and Esher Common are both nearby and are excellent for recreation and dog walking.

There is an impressive selection of schools in the area, including Danes Hill School in Oxshott and Reed's School in Cobham, Claremont Fan Court in Esher, Rowan Preparatory School in Claygate and St John's in Leatherhead.

Distances: Cobham 3 miles, Esher 3 miles, Guildford 14 miles, London 20 miles. (All distances are approximate).



- Reception
- Bedroom
- Bathroom
- Kitchen/Utility
- Storage
- Outside



Ground Floor



First Floor

Approximate Gross Internal Area
5635 sq ft / 523.5 sq m
Outbuildings: 108 sq ft / 10.0 sq m

This plan is for layout guidance only. Not drawn to scale unless stated. Windows and door openings are approximate. Whilst every care is taken in the preparation of this plan, please check all dimensions, shapes and compass bearings before making any decisions reliant upon them.

We would be delighted
to tell you more.

Charles Davenport

01932 591602

charles.davenport@knightfrank.com

Knight Frank Cobham

50 High Street, Cobham

Surrey, KT11 3EF

Tom Knowlden

01932 591610

tom.knowlden@knightfrank.com

[knightfrank.co.uk](https://www.knightfrank.co.uk)

Your partners in property

Important Notice 1. Particulars: These particulars are not an offer or contract, nor part of one. You should not rely on statements given by Knight Frank in the particulars, by word of mouth or in writing ("information") as being factually accurate about the property, its condition or its value. Neither Knight Frank nor any joint agent has any authority to make any representations about the property, and accordingly any information given is entirely without responsibility on the part of Knight Frank. 2. Material Information: Please note that the material information is provided to Knight Frank by third parties and is provided here as a guide only. While Knight Frank has taken steps to verify this information, we advise you to confirm the details of any such material information prior to any offer being submitted. If we are informed of changes to this information by the seller or another third party, we will use reasonable endeavours to update this as soon as practical. 3. Photos, Videos etc: The photographs, property videos and virtual viewings etc. show only certain parts of the property as they appeared at the time they were taken. Areas, measurements and distances given are approximate only. 4. Regulations etc: Any reference to alterations to, or use of, any part of the property does not mean that any necessary planning, building regulations or other consent has been obtained. A buyer must find out by inspection or in other ways that these matters have been properly dealt with and that all information is correct. 5. Fixtures and fittings: A list of the fitted carpets, curtains, light fittings and other items fixed to the property which are included in the sale (or may be available by separate negotiation) will be provided by the Seller's Solicitors. 6. VAT: The VAT position relating to the property may change without notice. 7. To find out how we process Personal Data, please refer to our Group Privacy Statement and other notices at <https://www.knightfrank.com/legals/privacy-statement>.

Particulars dated April 2025. Photographs and videos dated October 2022. All information is correct at the time of going to print. Knight Frank is the trading name of Knight Frank LLP. Knight Frank LLP is a limited liability partnership registered in England and Wales with registered number OC305934. Our registered office is at 55 Baker Street, London W1U 8AN. We use the term 'partner' to refer to a member of Knight Frank LLP, or an employee or consultant. A list of members names of Knight Frank LLP may be inspected at our registered office. If you do not want us to contact you further about our services then please contact us by either calling 020 3544 0692, email to marketing.help@knightfrank.com or post to our UK Residential Marketing Manager at our registered office (above) providing your name and address. Brochure by [wordperfectprint.com](https://www.wordperfectprint.com)