



BROOKSIDE FARMHOUSE

Hurstbourne Tarrant, Hampshire



A PRETTY GEORGIAN FARMHOUSE SITUATED IN THE HEART OF A SOUGHT-AFTER BOURNE VALLEY VILLAGE.

Brookside Farmhouse is an impressive village home which has been updated and modernised to a high standard by the current owners.


4


1


3


EPC


E

Local Authority: Test Valley Borough Council
Council Tax Band: G
Services: Mains electricity, water and drainage. Oil heating.
Postcode: SP11 0AE
What3words: ///valley.lectured.detect
Tenure: Freehold

LOCATION

Brookside Farmhouse is a pretty period property located in Hurstbourne Tarrant, a popular village to the north of Andover.

The village has a popular primary school, community centre and recreation ground with tennis courts.

Andover has a wider range of recreational and shopping facilities including a cinema and Waitrose. Trains from Andover and Whitchurch to London Waterloo take approximately 65 minutes with the A303 providing fast access to London and the West Country.

In addition to the well regarded village school other popular schools include Farleigh, Thorngrove, Winchester College, St Swithuns and Godolphin.

Distances: Andover 5.5 miles, Newbury 11 miles (London Paddington 50 minutes), Hungerford 11.5 miles, Marlborough 18 miles, Winchester 21.5 miles, Salisbury 24 miles. Distances and times approximate

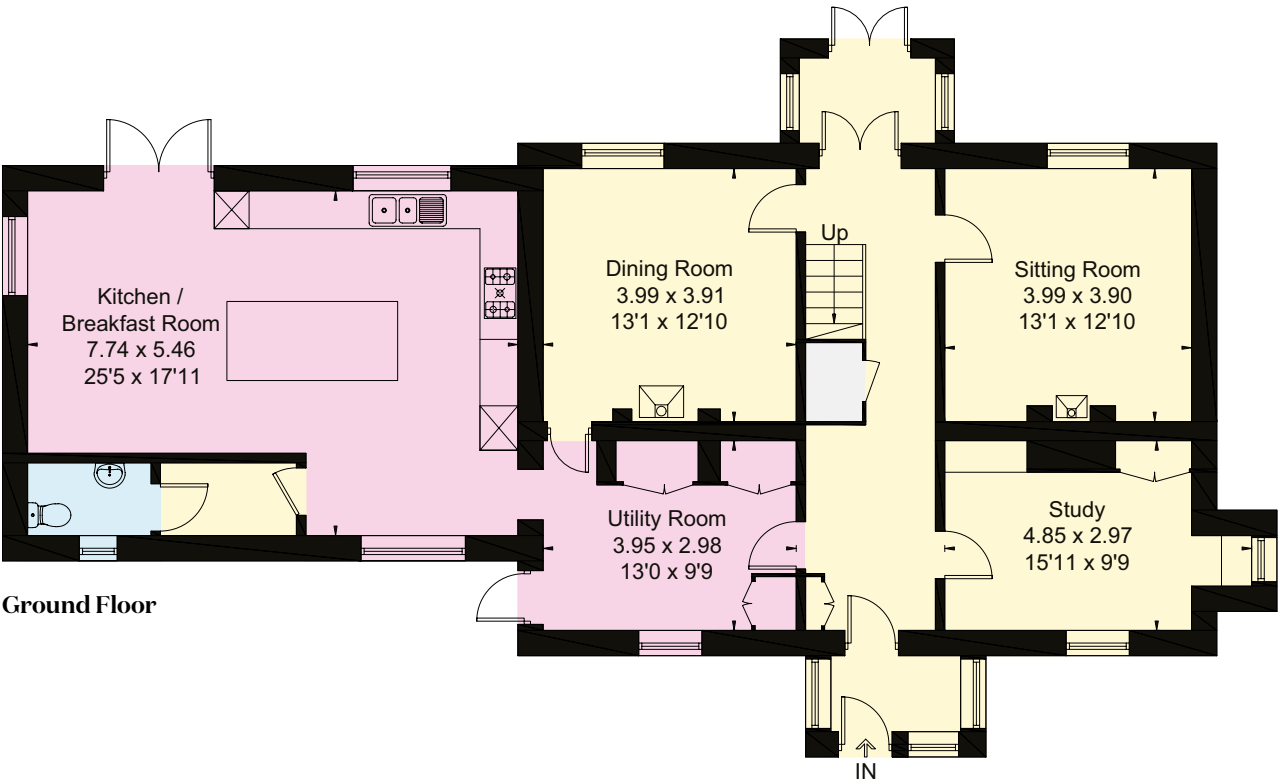
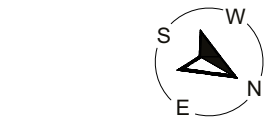


THE PROPERTY

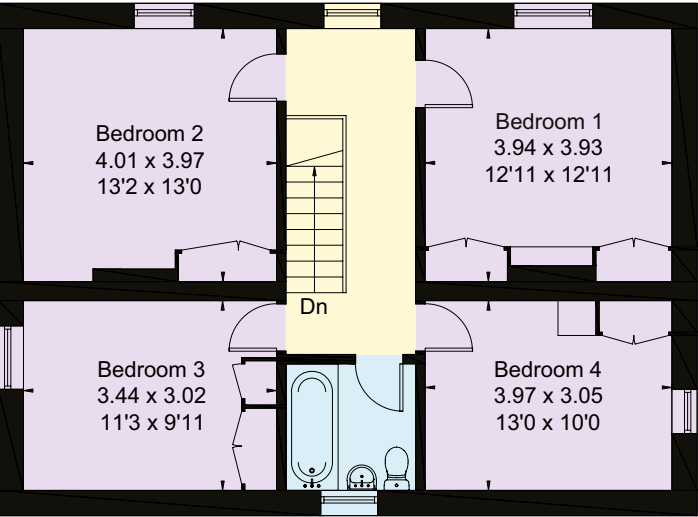
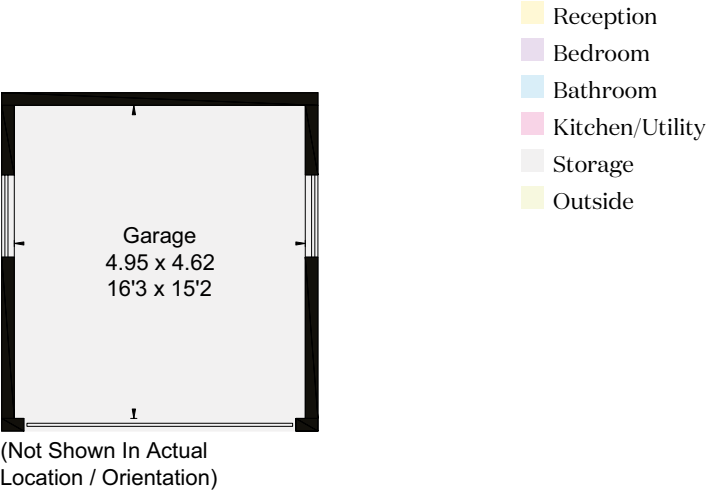
Brookside Farmhouse is a charming Grade II Listed home dating from around 1820. The well-proportioned, light-filled rooms feature good ceiling heights and sash windows. Extensively renovated by the current owners, updates include serviced windows, new chimneys and fireplaces, a new kitchen and bathroom along with many other improvements.

The fully renovated kitchen/breakfast room features quartz countertops, wooden cabinets and a waterfall island that seats four. French doors open to a walled rose garden bordering the Swift riverlet. The attractive sitting and dining rooms face south-west, overlooking the garden and there is a separate study. Upstairs are four bedrooms and a bathroom. New carpeting, tile floors and refinished wood floors run throughout. Every room has been thoughtfully restored and updated.

The delightful part-walled, south-facing garden is mainly lawn with a variety of mature shrubs and borders. A gravel drive leads to parking for several cars and planning permission has been granted for a new oak-framed two-car garage.



Approximate Gross Internal Area = 202.7 sq m / 2182 sq ft
Garage = 22.8 sq m / 245 sq ft
Total = 225.5 sq m / 2,427 sq ft



First Floor

This plan is for layout guidance only. Not drawn to scale unless stated. Windows and door openings are approximate. Whilst every care is taken in the preparation of this plan, please check all dimensions, shapes and compass bearings before making any decisions reliant upon them.

I would be delighted
to tell you more.

Rob Wightman
01488 688547
rob.wightman@knightfrank.com

Knight Frank Hungerford
Ramsbury House, 22 High Street
Hungerford, RG17 0NF

knightfrank.co.uk

Your partners in property

1. Particulars: These particulars are not an offer or contract, nor part of one. You should not rely on statements given by Knight Frank in the particulars, by word of mouth or in writing ("information") as being factually accurate about the property, its condition or its value. Neither Knight Frank nor any joint agent has any authority to make any representations about the property, and accordingly any information given is entirely without responsibility on the part of Knight Frank. 2. Material Information: Please note that the material information is provided to Knight Frank by third parties and is provided here as a guide only. While Knight Frank has taken steps to verify this information, we advise you to confirm the details of any such material information prior to any offer being submitted. If we are informed of changes to this information by the seller or another third party, we will use reasonable endeavours to update this as soon as practical. 3. Photos, Videos etc: The photographs, property videos and virtual viewings etc. show only certain parts of the property as they appeared at the time they were taken. Areas, measurements and distances given are approximate only. 4. Regulations etc: Any reference to alterations to, or use of, any part of the property does not mean that any necessary planning, building regulations or other consent has been obtained. A buyer must find out by inspection or in other ways that these matters have been properly dealt with and that all information is correct. 5. Fixtures and fittings: A list of the fitted carpets, curtains, light fittings and other items fixed to the property which are included in the sale (or may be available by separate negotiation) will be provided by the Seller's Solicitors. 6. VAT: The VAT position relating to the property may change without notice. 7. To find out how we process Personal Data, please refer to our Group Privacy Statement and other notices at <https://www.knightfrank.com/legals/privacy-statement>.

Particulars dated April 2025. Photographs and videos dated April 2025. RMCW/HNG012455926. All information is correct at the time of going to print. Knight Frank is the trading name of Knight Frank LLP. Knight Frank LLP is a limited liability partnership registered in England and Wales with registered number OC305934. Our registered office is at 55 Baker Street, London W1U 8AN. We use the term 'partner' to refer to a member of Knight Frank LLP, or an employee or consultant. A list of members names of Knight Frank LLP may be inspected at our registered office. If you do not want us to contact you further about our services then please contact us by either calling 020 3544 0692, email to marketing.help@knightfrank.com or post to our UK Residential Marketing Manager at our registered office (above) providing your name and address.