








SEPTEMBER COTTAGE

Aldbourn, Wiltshire



A CHARMING VILLAGE HOUSE

September Cottage is an attractive house situated off the village green in the heart of Aldbourne, an idyllic Wiltshire village.

		
4	2	2
		EPC
		D

Distances: M4 (Junction 14) 8 miles, Marlborough 8 miles, Hungerford 7 miles (London Paddington from 48 minutes), Swindon 10 miles (London Paddington from 47 minutes), Newbury 17 miles
(All distances and times are approximate)

Local Authority: Wiltshire Council
Council Tax band: G
Tenure: Freehold

SITUATION

Surrounded by rolling chalk hills, Aldbourne is a historic village with many amenities: a primary school, church, village hall, post office café, small supermarket, and pubs. St Michael's Church, overlooking the village green, dates to the 11th century. There are many clubs and groups within the community. Nearby Marlborough and Hungerford offer more facilities, including Waitrose, Tesco, cafés, boutiques, and well-known brands.

The M4 provides easy access to London and the West Country, while trains from Swindon to London Paddington take about 47 minutes. Alongside Aldbourne's primary school, there are numerous well-renowned schools in the area, including St John's Marlborough, Pinewood Prep, and Marlborough College.

SEPTEMBER COTTAGE

September Cottage, built 36 years ago in traditional style, features an impressive galleried hall with an oak staircase. The sitting room boasts a marble fireplace with a woodburning stove and French doors leading to the garden. The farmhouse-style kitchen/breakfast room has a gas Aga, with a utility room and stable door to the garden. The dining room enjoys a bay window overlooking the garden.

Upstairs, the principal bedroom has an en-suite and views of the village green and church. There are three further bedrooms, a family shower room and a large airing cupboard. A fully boarded, heated loft offers additional space.

Outside, the property is accessed by a short driveway with gates, leading to a paved courtyard, single garage and parking. The elevated garden offers views of the church and village green.





PROPERTY INFORMATION

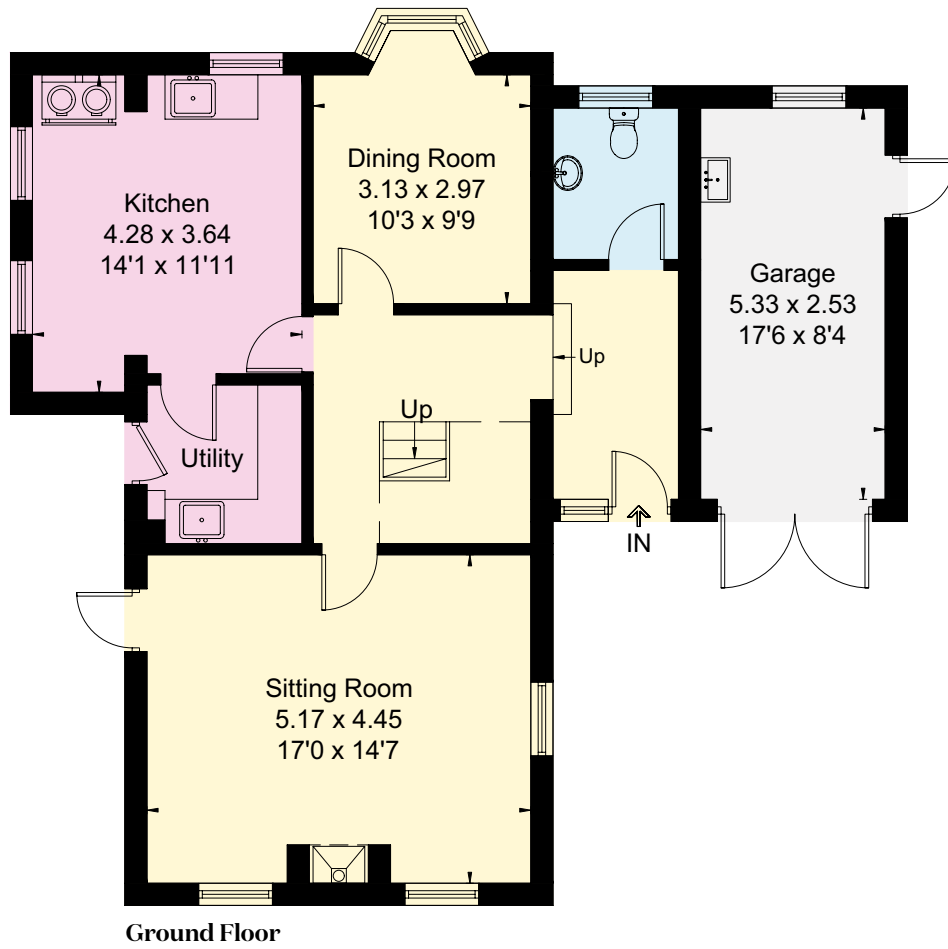
Services: Mains water, electricity and drainage. Gas heating.

Postcode: SN8 2EN

What3words: ///exchanges.marsh.collapsed

Fixtures & fittings: Only those mentioned in these sales particulars are included in the sale. All others, such as fitted carpets, curtains, light fittings, garden ornaments etc., are specifically excluded but may be made available by separate negotiation.

Viewing: Viewing by prior appointment only with the Agent.



Approximate Gross Internal Area = 157.4 sq m / 1,694 sq ft
Garage = 13.5 sq m / 145 sq ft
Total = 170.9 sq m / 1,839 sq ft



This plan is for layout guidance only. Not drawn to scale unless stated. Windows and door openings are approximate. Whilst every care is taken in the preparation of this plan, please check all dimensions, shapes and compass bearings before making any decisions reliant upon them.

We would be delighted
to tell you more.

Mark Potter
01488 682730
mark.potter@knightfrank.com

Knight Frank Hungerford
Ramsbury House, 22 High Street
Hungerford, RG17 0NF

Fiennes McCulloch
01488 688548
fiennes.mcculloch@knightfrank.com

[knightfrank.co.uk](https://www.knightfrank.co.uk)

Your partners in property

1. Particulars: These particulars are not an offer or contract, nor part of one. You should not rely on statements given by Knight Frank in the particulars, by word of mouth or in writing ("information") as being factually accurate about the property, its condition or its value. Neither Knight Frank nor any joint agent has any authority to make any representations about the property, and accordingly any information given is entirely without responsibility on the part of Knight Frank. 2. Material Information: Please note that the material information is provided to Knight Frank by third parties and is provided here as a guide only. While Knight Frank has taken steps to verify this information, we advise you to confirm the details of any such material information prior to any offer being submitted. If we are informed of changes to this information by the seller or another third party, we will use reasonable endeavours to update this as soon as practical. 3. Photos, Videos etc: The photographs, property videos and virtual viewings etc. show only certain parts of the property as they appeared at the time they were taken. Areas, measurements and distances given are approximate only. 4. Regulations etc: Any reference to alterations to, or use of, any part of the property does not mean that any necessary planning, building regulations or other consent has been obtained. A buyer must find out by inspection or in other ways that these matters have been properly dealt with and that all information is correct. 5. Fixtures and fittings: A list of the fitted carpets, curtains, light fittings and other items fixed to the property which are included in the sale (or may be available by separate negotiation) will be provided by the Seller's Solicitors. 6. VAT: The VAT position relating to the property may change without notice. 7. To find out how we process Personal Data, please refer to our Group Privacy Statement and other notices at <https://www.knightfrank.com/legals/privacy-statement>.

Particulars dated March 2025. Photographs and videos dated March 2025. Reference: MP/HNG012484750 All information is correct at the time of going to print. Knight Frank is the trading name of Knight Frank LLP. Knight Frank LLP is a limited liability partnership registered in England and Wales with registered number OC305934. Our registered office is at 55 Baker Street, London W1U 8AN. We use the term 'partner' to refer to a member of Knight Frank LLP, or an employee or consultant. A list of members names of Knight Frank LLP may be inspected at our registered office. If you do not want us to contact you further about our services then please contact us by either calling 020 3544 0692, email to marketing.help@knightfrank.com or post to our UK Residential Marketing Manager at our registered office (above) providing your name and address.