



SHEEN ROAD
RICHMOND

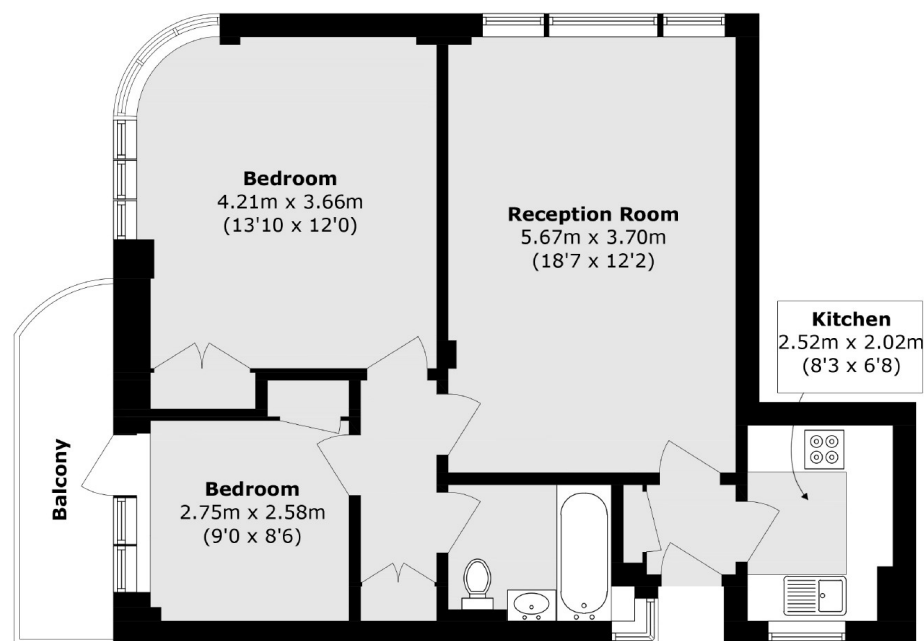
JACKSON-STOPS 

SHEEN ROAD, RICHMOND, TW9

ASKING PRICE: £549,950

A very good sized two double bedroom apartment in the heart of Richmond Town Centre. The property offers modern bright and spacious living in the one of the area's most well-known Art Deco developments. The Grade II listed building benefits from an on-site porter and private parking.

Centrally situated Lichfield Court is ideally located for Richmond's array of shopping and leisure amenities including Richmond Park and the River Thames. Richmond train station offers access to and from London by tube or rail via the District line, South Western trains and the London Overground service.



KEY FEATURES

- Two Bedrooms
- Private Balcony
- Parking
- Share of Freehold
- Porter
- Chain Free

Total area (approx.): 62.1 sq. m (668.4 sq. ft)

Balcony area (approx.): 5.7 sq. m (61.4 sq. ft)

Energy Rating: C. We aim to make our particulars both accurate and reliable. However they are not guaranteed; nor do they form part of an offer or contract. If you require clarification on any points then please contact us, especially if you are travelling some distance to view. Please note that appliances and heating systems have not been tested and therefore no warranties can be given as to their good working order.

ASKING PRICE: £549,950

TEDDINGTON

020 8943 9777

teddingtonsales@jackson-stops.com

jackson-stops.co.uk

JACKSON-STOPS

