



NOEL SQUARE
TEDDINGTON

JACKSON-STOPS 

NOEL SQUARE, TEDDINGTON, TW11

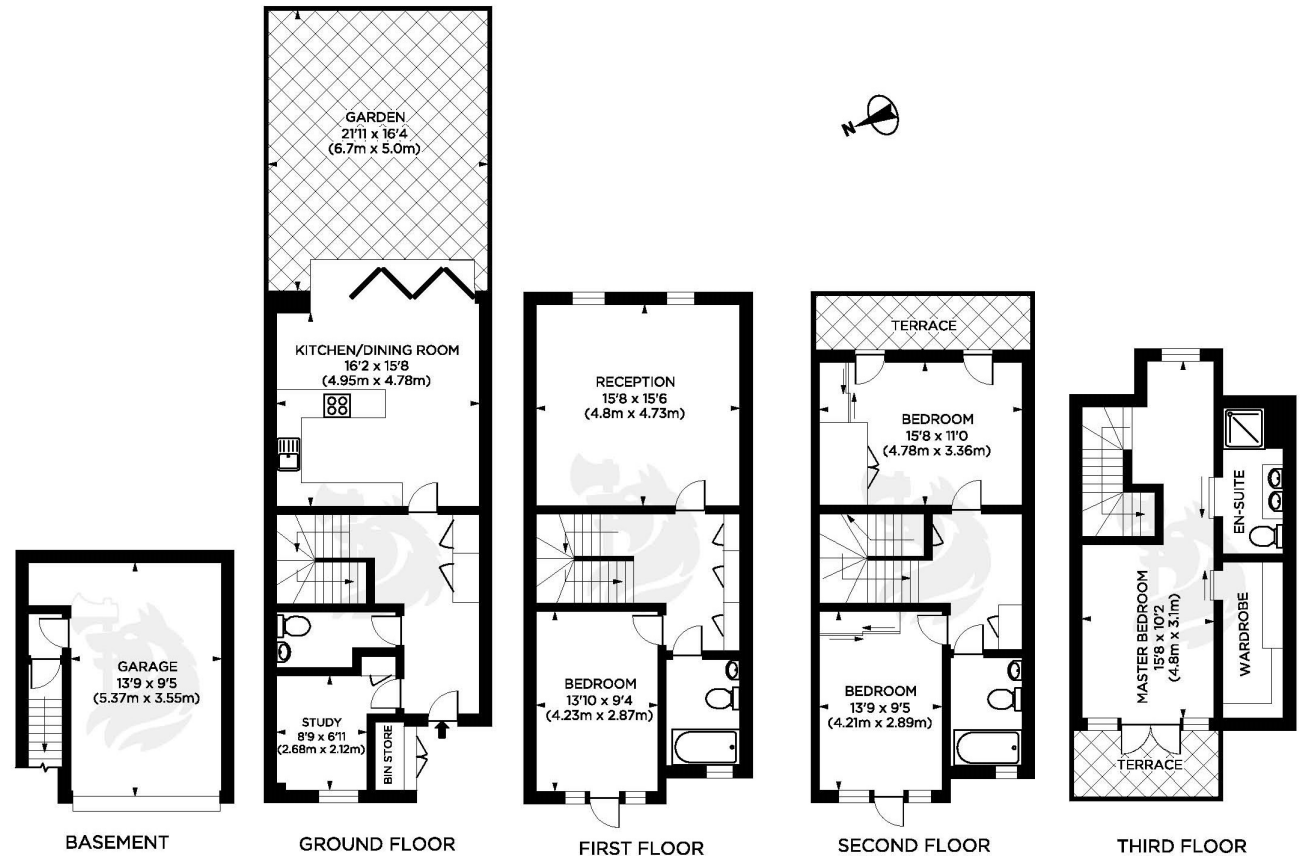
ASKING PRICE: £1,375,000

We're excited to bring to market this beautifully designed contemporary townhouse. Nestled in a secure gated development, which is ideally located only a 10 minute (approx.) walk away from Teddington train station.

Noel Square sits on Waldegrave Road which is only a short walk away from the hustle and bustle of Teddington High Street. The high street offers an array of supermarkets, independent restaurants and boutiques. It's position is ideal for any commuter with links in to Waterloo and Wimbledon from Teddington Railway Station being under a mile away and local bus routes connecting you to Richmond, Kingston and Twickenham.

KEY FEATURES

- Secure Gated Development
- South Facing Garden
- Underfloor Heating Throughout
- Close Proximity to Teddington Station
- Underground Parking for 2 Cars
- Garage



Noel Square TW11
Approximate Gross internal area 2217 sq ft/206 sq metres
@photosandfloorplans.com

Energy Rating: . We aim to make our particulars both accurate and reliable. However they are not guaranteed; nor do they form part of an offer or contract. If you require clarification on any points then please contact us, especially if you are travelling some distance to view. Please note that appliances and heating systems have not been tested and therefore no warranties can be given as to their good working order.

ASKING PRICE: £1,375,000

TEDDINGTON

020 8943 9777

teddingtonsales@jackson-stops.com

jackson-stops.co.uk

JACKSON-STOPS 