



**SHEEN ROAD**  
RICHMOND

**JACKSON-STOPS** 

## SHEEN ROAD, RICHMOND, TW9

ASKING PRICE: £1,550

An excellent 1-bedroom apartment located in the ever popular Lichfield Court development. Benefitting from an open plan reception/kitchen, private balcony and gated parking.

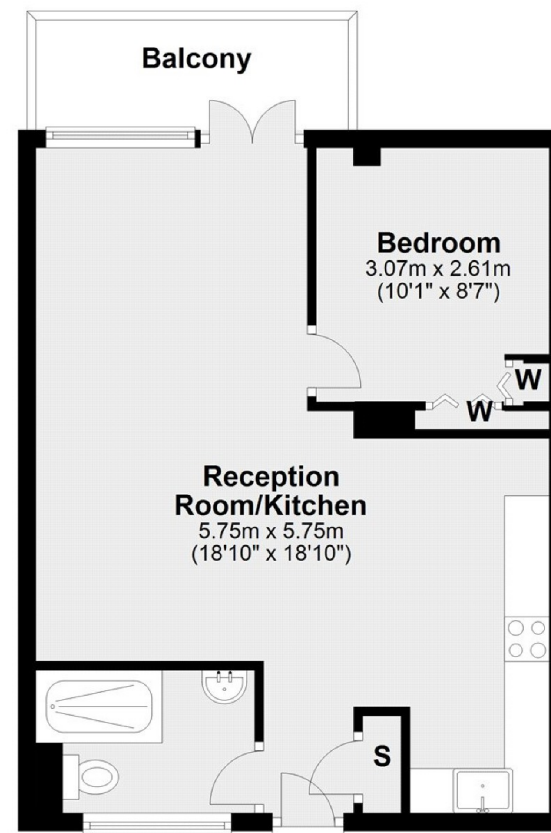
Based in the very centre of Richmond Lichfield Court property is mere moments from everything you could ever need.

### KEY FEATURES

- Central Richmond Location
- Secure gated parking
- 24 hour security
- Private Balcony
- Wood Floors
- Modern Bathroom

Energy Rating: . We aim to make our particulars both accurate and reliable. However they are not guaranteed; nor do they form part of an offer or contract. If you require clarification on any points then please contact us, especially if you are travelling some distance to view. Please note that appliances and heating systems have not been tested and therefore no warranties can be given as to their good working order.

### First Floor



Main area: Approx. 42.8 sq. metres (461.1 sq. feet)  
Plus balconies, approx. 4.7 sq. metres (50.1 sq. feet)

3 LICHFIELD TERRACE, SHEEN ROAD, RICHMOND, TW9 1AS

020 8940 0066

richmond@jackson-stops.co.uk

jackson-stops.co.uk

JACKSON-STOPS