



ROSEBANK CLOSE
TEDDINGTON

JACKSON-STOPS 

ROSEBANK CLOSE TEDDINGTON, TW11

ASKING PRICE: £1,795 PCM

This lovely two bedroom apartment is situated in a private development with off street parking. Having undergone a refurbishment including new shower room, flooring and redecoration, the property is ready for immediate occupation.

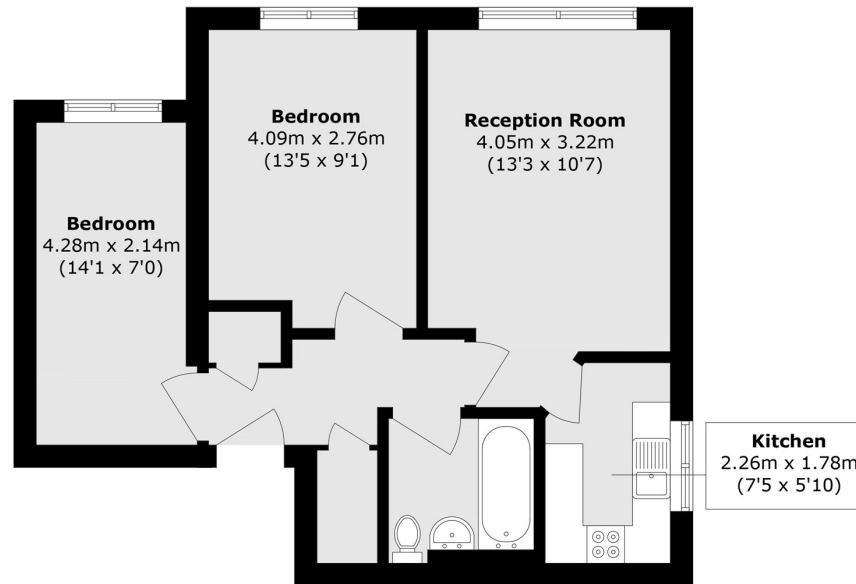
Rosebank Close is just off of Fairfax Road which is less than half a mile to Teddington train station. The High Street and the Royal Bushy Park are also moments away.

KEY FEATURES

- Two Bedrooms
- Top Floor
- Allocated Parking
- Central Location
- Private Development
- Built In Storage







Total area (approx.): 50.9 sq. m (547.8 sq. ft)

Energy Rating: D. We aim to make our particulars both accurate and reliable. However they are not guaranteed; nor do they form part of an offer or contract. If you require clarification on any points then please contact us, especially if you are travelling some distance to view. Please note that appliances and heating systems have not been tested and therefore no warranties can be given as to their good working order.

ASKING PRICE: £1,795 PCM

TEDDINGTON

020 8943 9955

teddingtonlettings@jackson-stops.com

jackson-stops.co.uk

JACKSON-STOPS 