



MAY BATE AVENUE
KINGSTON

JACKSON-STOPS 

MAY BATE AVENUE KINGSTON, KT2

ASKING PRICE: £3,800 PCM

Situated in the centre of Kingston in a private gated development is this four-bedroom townhouse. Providing an abundance of living space split over four floors. This home further benefits from a garage and off street parking.

This wonderful development is near Kingston station giving direct access into Waterloo and the A3 which serves both London & the M25. Kingston town centre, Richmond Park and the River Thames are also within easy reach.

KEY FEATURES

- Private Gated Development
- Townhouse
- Four Bedrooms
- Garage
- Moments From The River
- Three Bathrooms





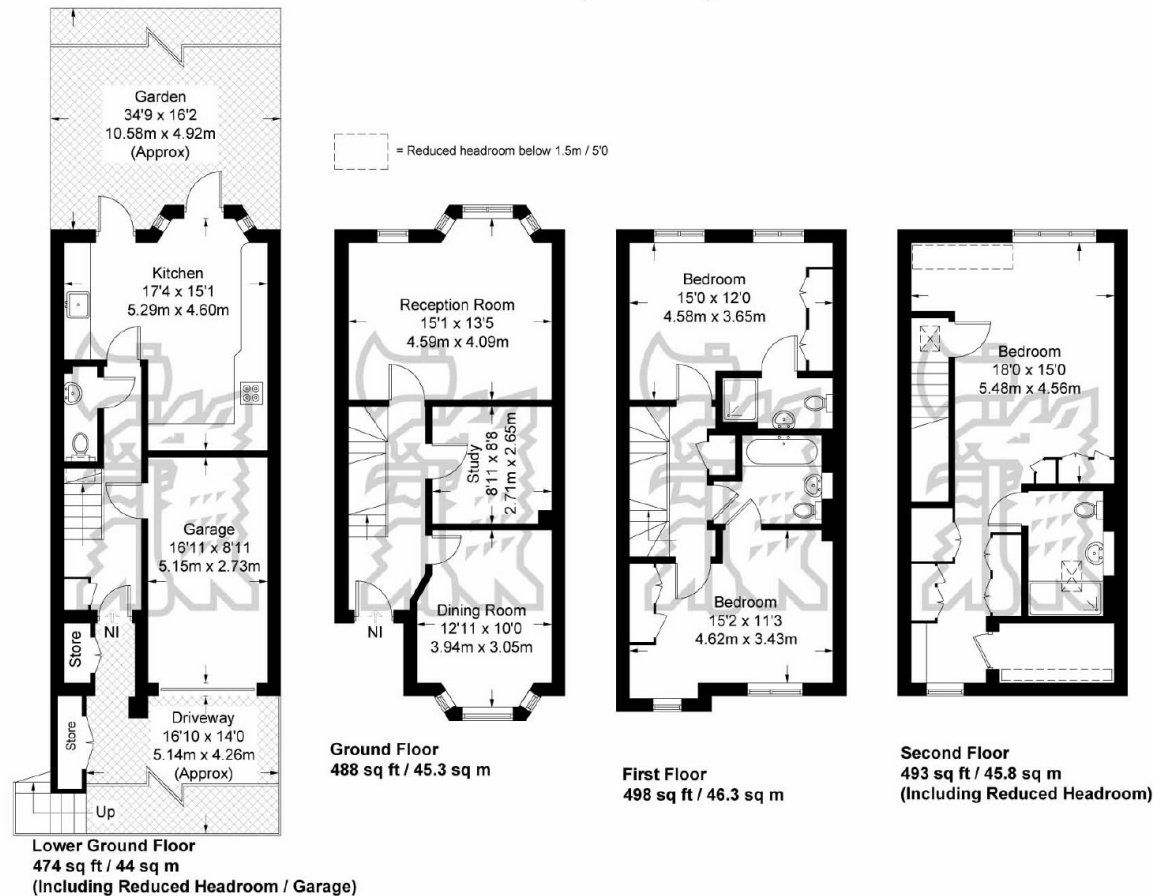
May Bate Avenue

Approximate Gross Internal Area = 1929 sq ft / 179.2 sq m
(Excluding Reduced Headroom)

Store = 21 sq ft / 2.0 sq m

Reduced Headroom = 24 sq ft / 2.2 sq m

Total = 1974 sq ft / 183.4 sq m



Not to scale, for guidance only and must not be relied upon as a statement of fact.
All measurements and areas are approximate only and have been prepared in accordance with the current edition of the RICS Code of Measuring Practice.

Energy Rating: . We aim to make our particulars both accurate and reliable. However they are not guaranteed; nor do they form part of an offer or contract. If you require clarification on any points then please contact us, especially if you are travelling some distance to view. Please note that appliances and heating systems have not been tested and therefore no warranties can be given as to their good working order.

ASKING PRICE: £3,800 PCM

TEDDINGTON

020 8943 9955

teddingtonlettings@jackson-stops.com

jackson-stops.co.uk

JACKSON-STOPS