



**HOLMESDALE ROAD**  
TEDDINGTON

**JACKSON-STOPS** 

## HOLMESDALE ROAD, TEDDINGTON, TW11

ASKING PRICE: £1,595 PCM

An exceptional one bedroom apartment in the prestigious Langdon Park Estate. This property boasts a spacious dual aspect reception room and a modern interior throughout. The residents also benefit from access to the estate Gym and allocated parking.

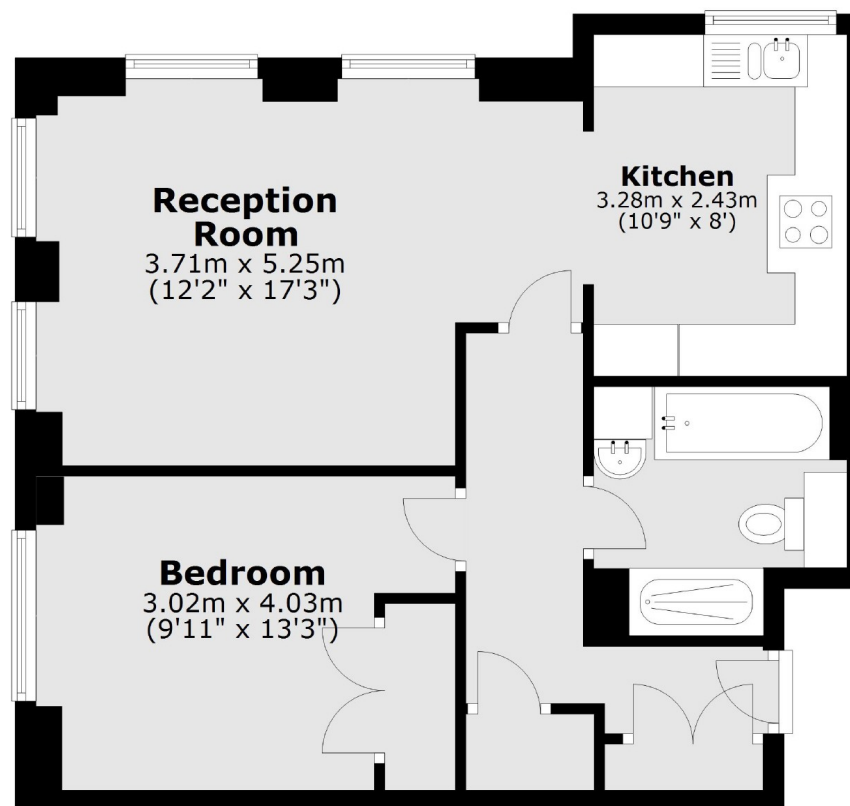
Holmesdale Road is 0.5 miles from Hampton Wick station with on average commute time of 32 minutes to London Waterloo station, and within easy access to both Kingston Upon Thames and Teddington town centres with excellent shopping and dining options.

### KEY FEATURES

- Ground Floor
- One Large Bedroom
- Reception With Wood Floors
- Parking
- Four Piece Bathroom
- Separate Kitchen

Energy Rating: . We aim to make our particulars both accurate and reliable. However they are not guaranteed; nor do they form part of an offer or contract. If you require clarification on any points then please contact us, especially if you are travelling some distance to view. Please note that appliances and heating systems have not been tested and therefore no warranties can be given as to their good working order.

### Ground Floor



Total area: approx. 52.5 sq. metres (565.1 sq. feet)

ASKING PRICE: £1,595 PCM

TEDDINGTON

020 8943 9955

teddington@jackson-stops.co.uk

jackson-stops.co.uk

JACKSON-STOPS 