



MANOR ROAD
TEDDINGTON

JACKSON-STOPS 

MANOR ROAD, TEDDINGTON, TW11

ASKING PRICE: £450,000

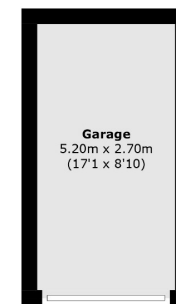
A very large, light and bright top floor apartment by the River Thames in heart of Teddington. The property offers exceptional space and living throughout, there is a triple aspect lounge that offers stunning views across Teddington. It comes with allocated parking and a garage, there is also a well cared for communal garden with direct access to the River Thames.

Braemar House is located just off Manor Road close to the River Thames. Teddington High Street is within walking distance with its boutique shops, cafe's and restaurants. Teddington mainline station is also close by.

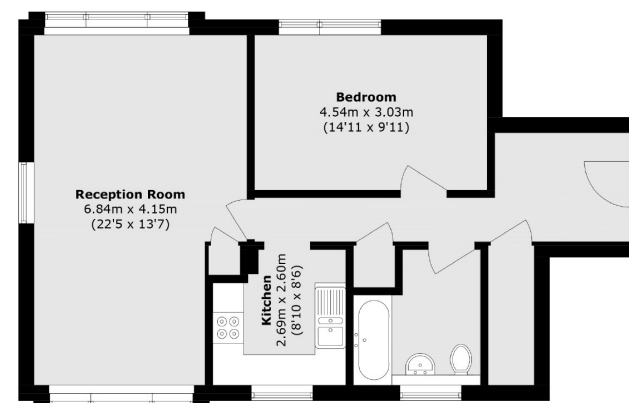
KEY FEATURES

- Large Riverside Apartment
- Lovely Condition
- Great Location
- Allocated Parking
- Garage
- Chain Free

Energy Rating: D. We aim to make our particulars both accurate and reliable. However they are not guaranteed; nor do they form part of an offer or contract. If you require clarification on any points then please contact us, especially if you are travelling some distance to view. Please note that appliances and heating systems have not been tested and therefore no warranties can be given as to their good working order.



Garage
(Not Shown In Actual
Location / Orientation)



Third Floor

Total area (approx.): 69.9 sq. m (752.4 sq. ft)

Garage area (approx.): 14.0 sq. m (150.6 sq. ft)

ASKING PRICE: £450,000

TEDDINGTON

020 8943 9777

teddingtonsales@jackson-stops.com

jackson-stops.co.uk

JACKSON-STOPS 