



SHEEN ROAD
RICHMOND

JACKSON-STOPS 

SHEEN ROAD, RICHMOND, TW9

ASKING PRICE: £1,450 PCM

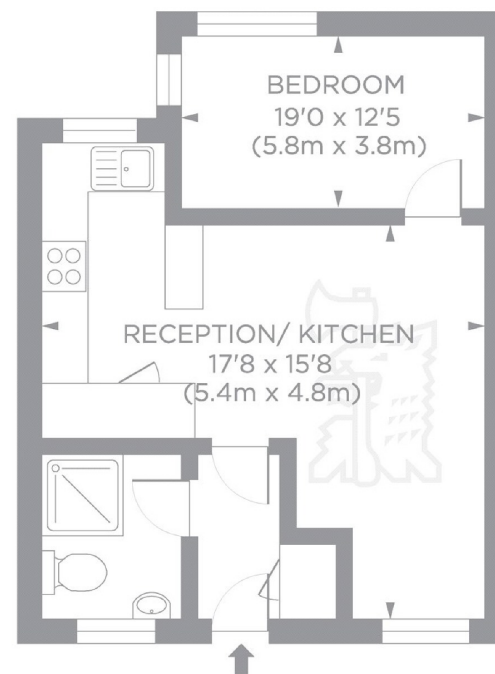
In a popular art deco building in Richmond, this one bedroom apartment has an open plan living room, gated residents parking available, as well as an on-site porter and 24 hour security.

Lichfield Court is in the heart of Richmond's bustling town centre but the development has a tranquil feel to it. Conveniently next to a large supermarket and local coffee shops.

KEY FEATURES

- One bedroom
- Ground Floor
- Private Development
- 24hr Security
- Unfurnished
- Gated Parking

Energy Rating: D. We aim to make our particulars both accurate and reliable. However they are not guaranteed; nor do they form part of an offer or contract. If you require clarification on any points then please contact us, especially if you are travelling some distance to view. Please note that appliances and heating systems have not been tested and therefore no warranties can be given as to their good working order.



GROUND FLOOR

Lichfield Court TW9
Gross internal area 387sq ft/36 sq metres
©photosandfloorplans.com

ASKING PRICE: £1,450 PCM

TEDDINGTON

020 8943 9955

teddingtonlettings@jackson-stops.com

jackson-stops.co.uk

JACKSON-STOPS 