



WALDEGRAVE ROAD
TEDDINGTON

JACKSON-STOPS 

WALDEGRAVE ROAD TEDDINGTON, TW11

ASKING PRICE: £2,450 PCM

New to the market, is this spacious three bedroom home located in the centre of Teddington. Benefitting from off street parking and a large private garden to enjoy all year round.

Waldegrave Road is a popular location which is less than a mile to Teddington train station and even closer to hustle and bustle of High Street and Broad Street where there are plenty of shops, bars and restaurants for you to choose from.

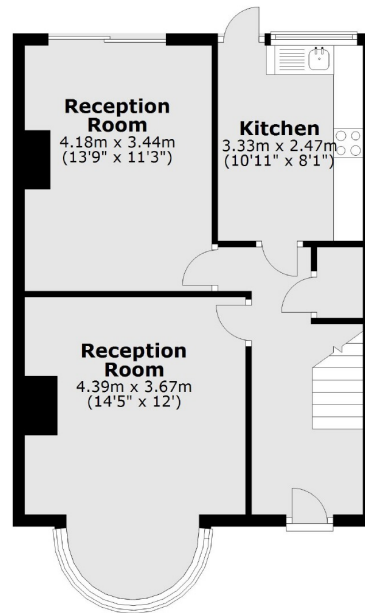
KEY FEATURES

- Three Bedroom House
- Private Garden
- Off-Street Parking
- Family Bathroom
- Close to shops
- Two Living Rooms

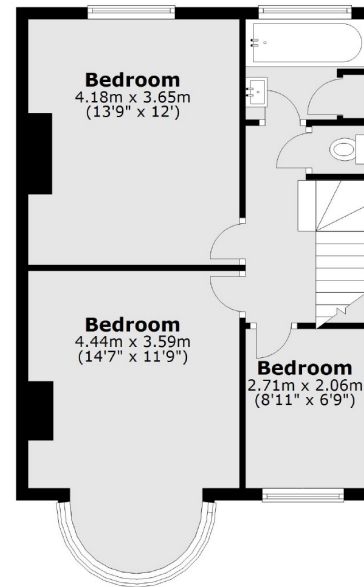




Ground Floor



First Floor



Total area: approx. 93.8 sq. metres (1010.0 sq. feet)

Energy Rating: . We aim to make our particulars both accurate and reliable. However they are not guaranteed; nor do they form part of an offer or contract. If you require clarification on any points then please contact us, especially if you are travelling some distance to view. Please note that appliances and heating systems have not been tested and therefore no warranties can be given as to their good working order.

36 HIGH STREET, TEDDINGTON, LONDON, TW11 8EW

020 8943 9955

teddington@jackson-stops.co.uk

jackson-stops.co.uk

JACKSON-STOPS 