



**ELTON CLOSE**  
KINGSTON

**JACKSON-STOPS** 



## ELTON CLOSE, KINGSTON, KT1

ASKING PRICE: £385,000

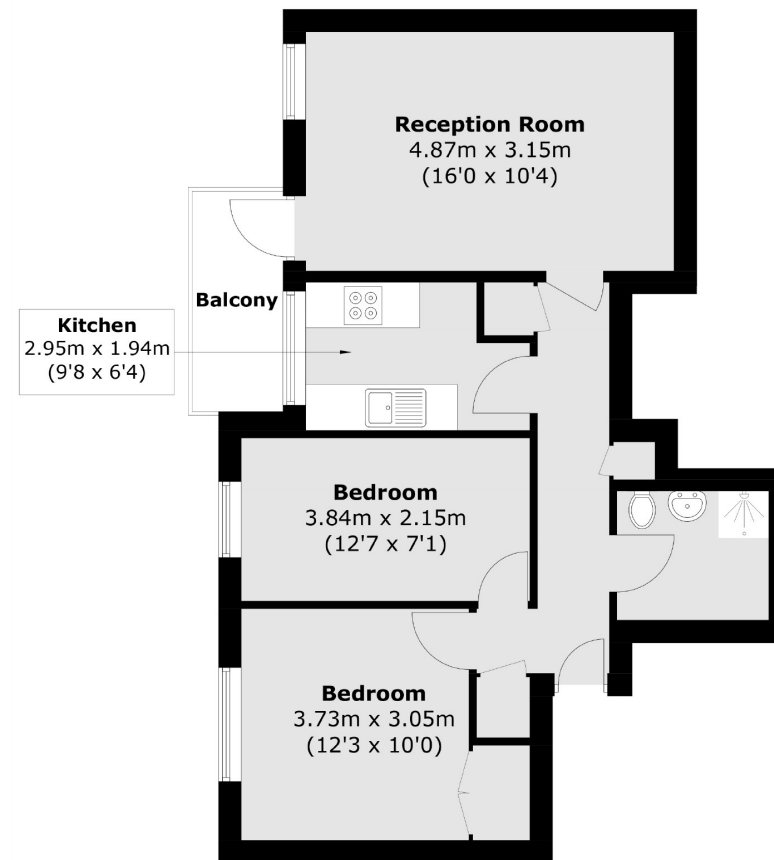
A very well presented and modern two double bedroom apartment in the heart of Hampton Wick. The property is light and bright throughout with good sized rooms. It also comes with allocated parking and a private balcony.

Located just off of Kingston Road, Elton Close is less than a five minute walk to Hampton Wick station. There is also a bus stop very close by with access to Kingston and Twickenham also within five minutes. Also located very close to Bushy Park Road and the green spaces around Langdon Park.

### KEY FEATURES

- Two Bedroom Apartment
- Modern Condition
- Communal Gardens
- Allocated Parking
- Private Balcony
- Great Location

Energy Rating: C. We aim to make our particulars both accurate and reliable. However they are not guaranteed; nor do they form part of an offer or contract. If you require clarification on any points then please contact us, especially if you are travelling some distance to view. Please note that appliances and heating systems have not been tested and therefore no warranties can be given as to their good working order.



### Second Floor

Total area (approx.): 51.6 sq. m ( 555.4 sq. ft)  
Balcony area : 3.5 sq. m ( 37.6 sq. ft)

ASKING PRICE: £385,000

TEDDINGTON

020 8943 9777

teddingtonsales@jackson-stops.com

jackson-stops.co.uk

JACKSON-STOPS 