



PORTLAND TERRACE
RICHMOND

JACKSON-STOPS 

PORTLAND TERRACE RICHMOND, TW9

ASKING PRICE: £6,500 PCM

An outstanding three bedroom apartment forming the lower ground floor of this impressive Georgian conversion property. Situated on The Green, which is arguably Richmond's premier location, the property boasts three double bedrooms, three bathrooms, private garden and large reception room.

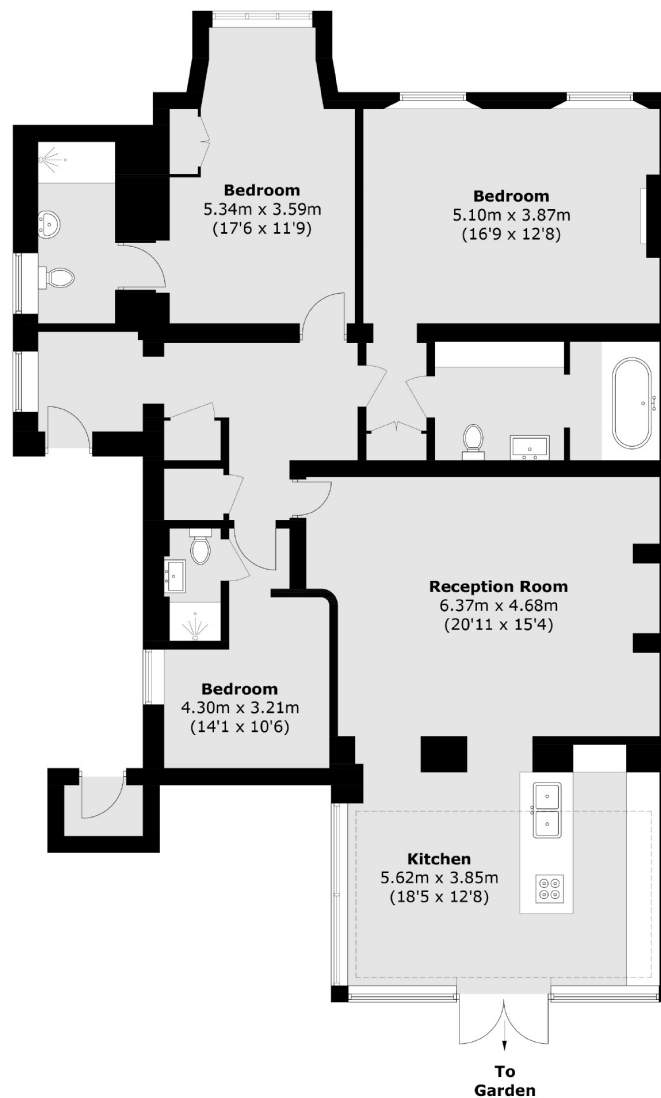
Located on Richmond Green, moments from Richmond town centre with it's numerous shops, restaurants, two theatres and Richmond Station, National Rail (Waterloo to Reading line), London Underground District line and also the London Overground North London Line.



KEY FEATURES

- Stunning Georgian Conversion
- Private Landscaped Garden
- Three Double Bedrooms
- Three Bathrooms
- Wood Floors Throughout





Total area (approx.): 143.5 sq. m (1,544.6 sq. ft)
Outside Cupboard : 1.4 sq. m (15.1 sq. ft)

Energy Rating: . We aim to make our particulars both accurate and reliable. However they are not guaranteed; nor do they form part of an offer or contract. If you require clarification on any points then please contact us, especially if you are travelling some distance to view. Please note that appliances and heating systems have not been tested and therefore no warranties can be given as to their good working order.

ASKING PRICE: £6,500 PCM

TEDDINGTON

020 8943 9955

teddingtonlettings@jackson-stops.com

jackson-stops.co.uk

JACKSON-STOPS 