



GARDEN ROAD
RICHMOND

JACKSON-STOPS 

GARDEN ROAD, RICHMOND, TW9

ASKING PRICE: £475,000

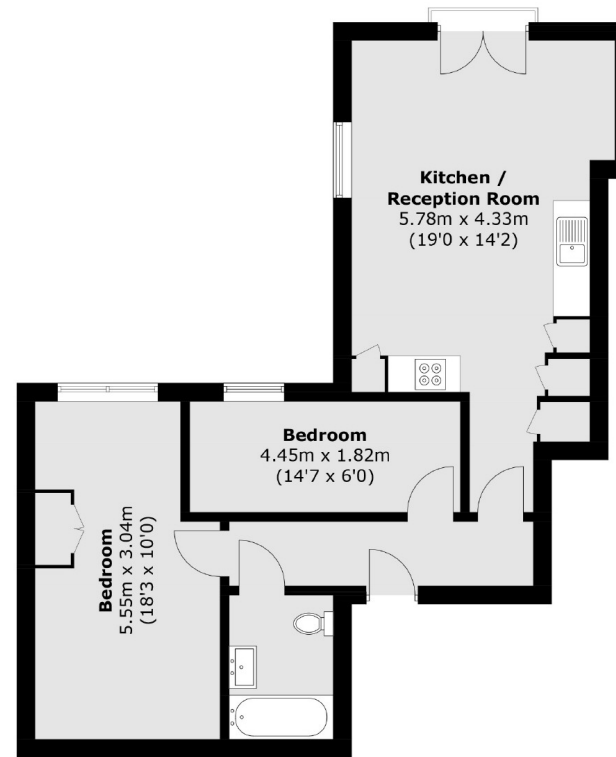
A very well presented light and bright two double bedroom modern apartment. The property is situated in the very sought after Richmond Upon Thames, it is light and modern throughout and comes with secure allocation parking. The property is also being sold chain free and very good condition.

Garden Road is close to mainline stations into Waterloo, Richmond town centre is close by where you'll find a vast array of restaurants, bars, leisure facilities and shops. The River Thames, Royal Richmond Park and Kew Gardens are also nearby, whilst for the tennis or golf enthusiast, Dukes Meadows, is not too far away.

KEY FEATURES

- Modern Development
- Two Double Bedrooms
- Open Plan Living
- Great Location
- Allocated Parking
- Chain Free

Energy Rating: B. We aim to make our particulars both accurate and reliable. However they are not guaranteed; nor do they form part of an offer or contract. If you require clarification on any points then please contact us, especially if you are travelling some distance to view. Please note that appliances and heating systems have not been tested and therefore no warranties can be given as to their good working order.



Total area (approx.): 62.2 sq. m (669.5 sq. ft)

ASKING PRICE: £475,000

TEDDINGTON

020 8943 9777

teddingtonsales@jackson-stops.com

jackson-stops.co.uk

JACKSON-STOPS 