



MORTIMER CRESCENT

JACKSON-STOPS 

MORTIMER CRESCENT, , KT4

ASKING PRICE: £795,000

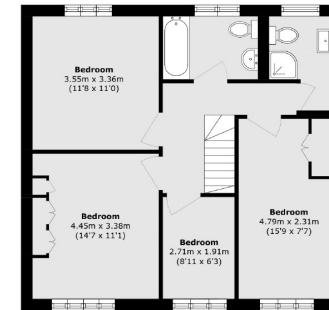
A well presented double fronted semi-detached family home. The property offers four bedrooms, off street parking, a garage and a large private garden in the heart of Worcester Park on a lovely residential street.

Mortimer Crescent is a leafy residential road in Worcester Park. There are plenty of bus routes nearby with a quick route to Tolworth Mainline Station and Worcester Park perfectly equipped with plenty of shops and restaurants.

KEY FEATURES

- Family Home
- Four Bedrooms
- Off Street Parking
- Large Private Garden
- Potential to Extend STTPS
- Chain Free

Energy Rating: . We aim to make our particulars both accurate and reliable. However they are not guaranteed; nor do they form part of an offer or contract. If you require clarification on any points then please contact us, especially if you are travelling some distance to view. Please note that appliances and heating systems have not been tested and therefore no warranties can be given as to their good working order.



First Floor



Ground Floor

Total Internal area (approx.): 139.9 sq. m (1505.8 sq. ft.)
(Excluding Garage)
Garage area (approx.): 8.6 sq. m (92.5 sq. ft.)
Total area (approx.): 149.5 sq. m (1609.2 sq. ft.)
(Including Garage)

ASKING PRICE: £795,000

TEDDINGTON

020 8943 9777

teddingtonsales@jackson-stops.com

jackson-stops.co.uk

JACKSON-STOPS 