



CROMWELL ROAD
TEDDINGTON

JACKSON-STOPS 

CROMWELL ROAD TEDDINGTON, TW11

ASKING PRICE: £1,850 PCM

A ground floor two-bedroom apartment, situated in the very popular 'Redlands' development in the heart of Teddington. This property offers just over 650 Sq. Ft of living space with the added benefit of communal gardens and parking.

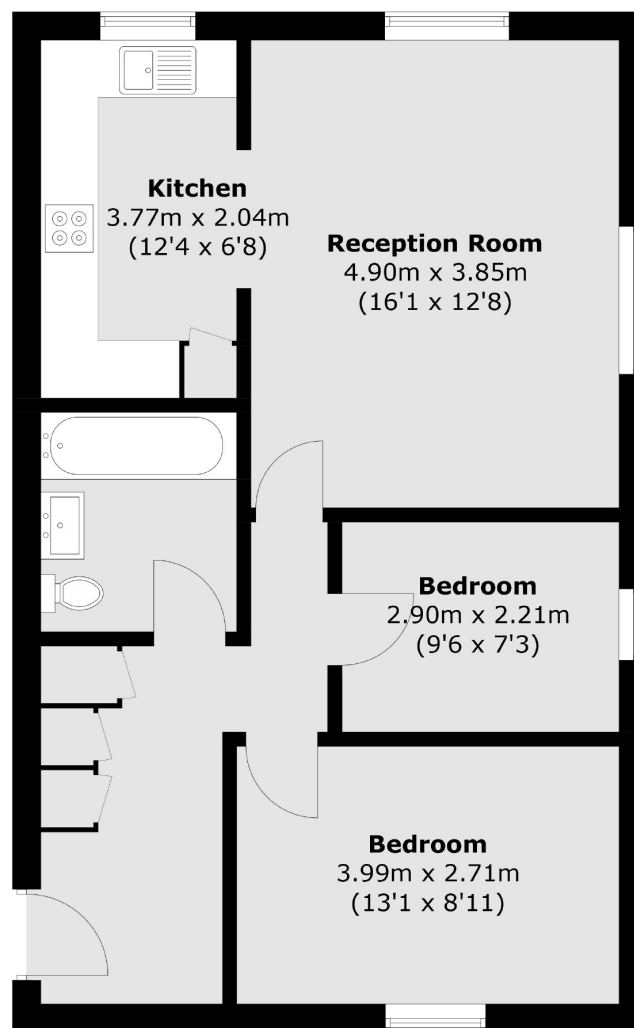
Cromwell Road leads from Kingston Lane and Station Road. Teddington train station is on your doorstep with a shortcut through to Bushy Park. The High Street is nearby with coffee shops, bars, restaurants and supermarkets.



KEY FEATURES

- Allocated parking
- Central Teddington
- Well Presented
- Two Bedrooms
- Allocated Parking
- Modern Bathroom





Ground Floor

Total area (approx.): 61.2 sq. m (658.7 sq. ft)

Energy Rating: C. We aim to make our particulars both accurate and reliable. However they are not guaranteed; nor do they form part of an offer or contract. If you require clarification on any points then please contact us, especially if you are travelling some distance to view. Please note that appliances and heating systems have not been tested and therefore no warranties can be given as to their good working order.

ASKING PRICE: £1,850 PCM

TEDDINGTON

020 8943 9955

teddingtonlettings@jackson-stops.com

jackson-stops.co.uk

JACKSON-STOPS 