



**RICHMOND HILL**  
RICHMOND

**JACKSON-STOPS** 



## RICHMOND HILL, RICHMOND, TW10

ASKING PRICE: £3,650 PCM

A two bedroom duplex apartment located at the top of Richmond Hill. On the first floor there are two large reception rooms, a separate kitchen, shower room and entrance hall, on the second floor there are two double bedrooms and a family bathroom. The property has communal gardens to the rear and views over Richmond Hill.

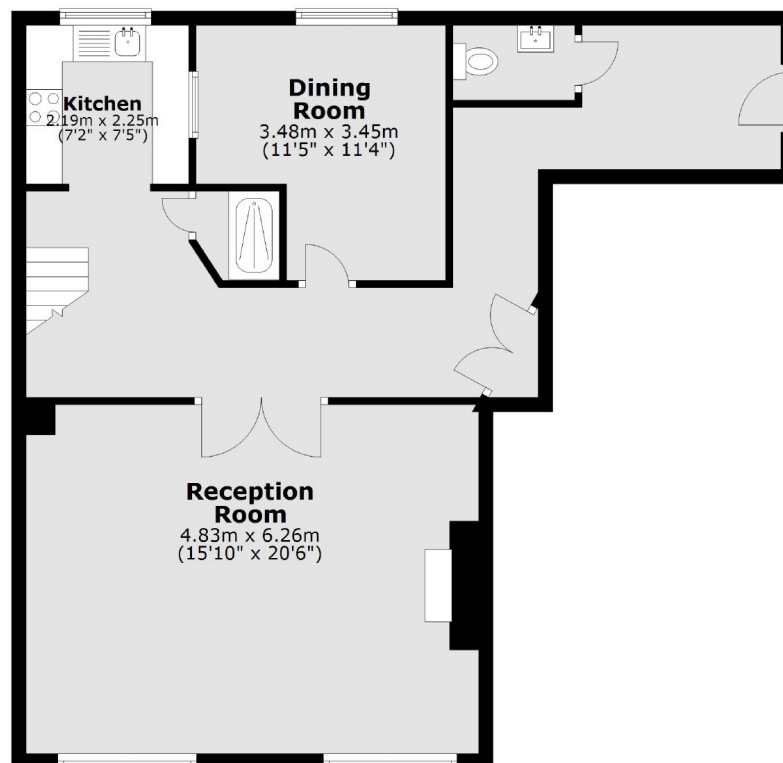
Richmond Hill is renowned for its stunning views over the Thames and the surrounding parklands, including the famous Richmond Park, and is within easy reach of Richmond town centre with it's train station, shops and restaurants.

### KEY FEATURES

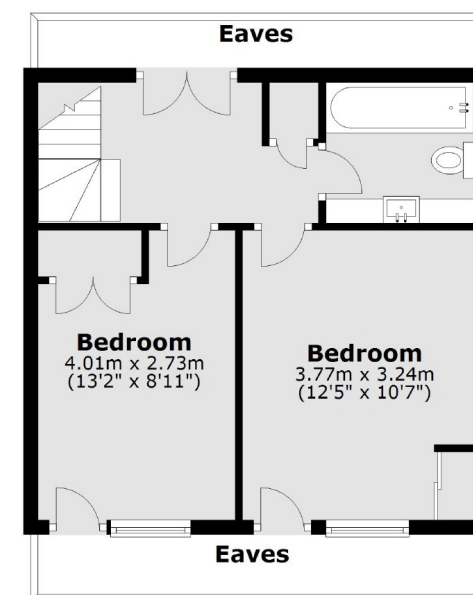
- Two Double Bedrooms
- Split Level Apartment
- Stunning Views
- Two Reception Rooms
- Moments from Richmond Park
- Richmond Hill

Energy Rating: D. We aim to make our particulars both accurate and reliable. However they are not guaranteed; nor do they form part of an offer or contract. If you require clarification on any points then please contact us, especially if you are travelling some distance to view. Please note that appliances and heating systems have not been tested and therefore no warranties can be given as to their good working order.

### Fourth Floor



### Top Floor



Total area: approx. 110.7 sq. metres (1191.6 sq. feet)

ASKING PRICE: £3,650 PCM

TEDDINGTON

020 8943 9955

teddingtonlettings@jackson-stops.com

jackson-stops.co.uk

JACKSON-STOPS 