



CHRISTCHURCH ROAD

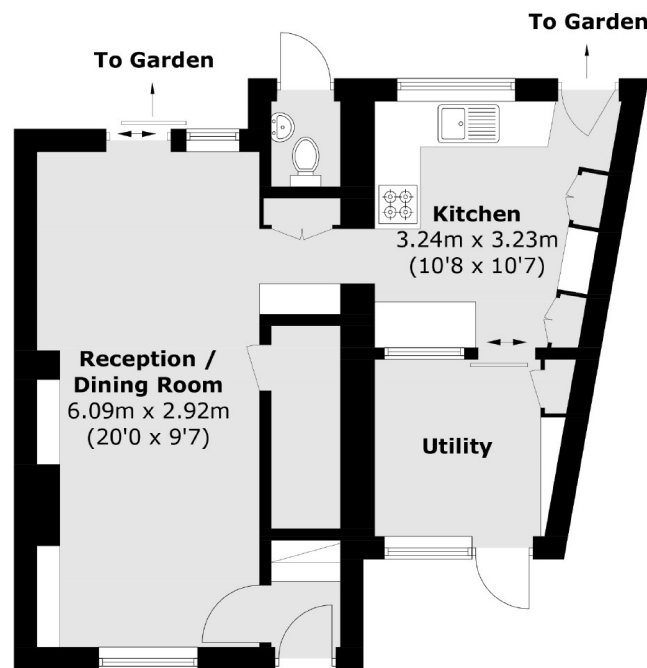
JACKSON-STOPS 

CHRISTCHURCH ROAD, , SW14

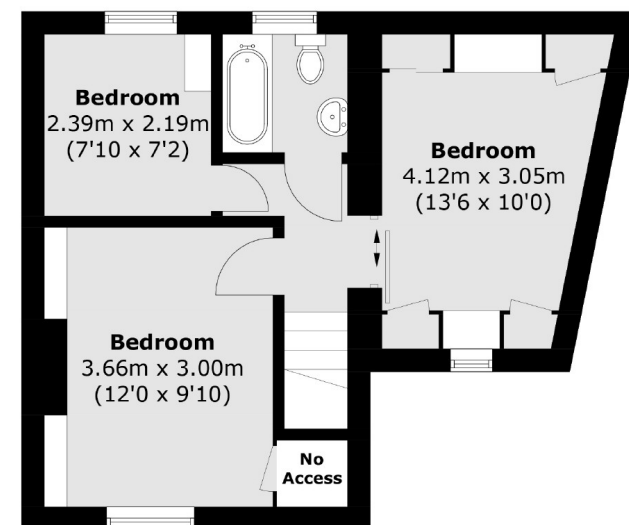
ASKING PRICE: £990,000

A charming double fronted terraced cottage in need of renovation throughout. The property offers three good sized bedrooms, a lovely bright space and a large private garden in the heart of East Sheen.

Christchurch Road is located just off Sheen Lane with its lovely parkside location. Richmond is close by with its excellent transport links and vibrant highstreet, with plenty of shops, cafés, bars and restaurants. Mortlake is also close by as well as excellent bus routes.



Ground Floor



First Floor

KEY FEATURES

- Period Property
- Double Fronted
- Terraced Cottage
- Three Bedrooms
- Large Private Garden
- Chain Free

Approx Internal Area: 79.5 sq. m (855.7 ft)
External WC: 1.1 sq. m (11.8 sq. ft)
Total: 80.6 sq. m (867.5 sq. ft)

Energy Rating: F. We aim to make our particulars both accurate and reliable. However they are not guaranteed; nor do they form part of an offer or contract. If you require clarification on any points then please contact us, especially if you are travelling some distance to view. Please note that appliances and heating systems have not been tested and therefore no warranties can be given as to their good working order.

ASKING PRICE: £990,000

TEDDINGTON

020 8943 9777

teddingtonsales@jackson-stops.com

jackson-stops.co.uk

JACKSON-STOPS 