



SHEEN ROAD  
RICHMOND

JACKSON-STOPS 

## SHEEN ROAD, RICHMOND, TW9

ASKING PRICE: £259,950

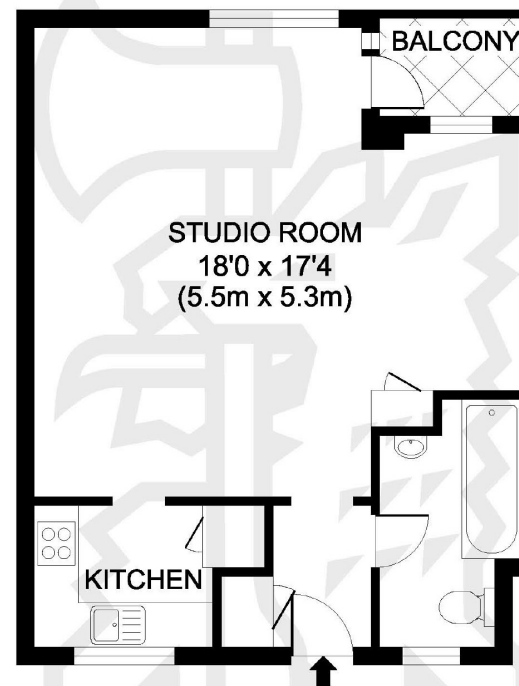
An opportunity to purchase an mansion block apartment offering 388 sq ft of accommodation. The property offers a contemporary interior set within an iconic Art Deco Grade II Listed building and benefits from an on-site porter. The property also benefits from a private Balcony and a parking space.

Centrally situated Lichfield Court is ideally located for Richmond's array of shopping and leisure amenities including Richmond Park and the River Thames. Richmond train station offers access to and from London by tube or rail via the District line, South Western trains and the London Overground service.

### KEY FEATURES

- Studio Apartment
- Private Balcony
- Parking
- Share of Freehold
- Sought After Location
- Long Lease

Energy Rating: . We aim to make our particulars both accurate and reliable. However they are not guaranteed; nor do they form part of an offer or contract. If you require clarification on any points then please contact us, especially if you are travelling some distance to view. Please note that appliances and heating systems have not been tested and therefore no warranties can be given as to their good working order.



**FIRST FLOOR**  
Sheen Road, TW9  
Gross internal area 388 sq ft/36 sq metres  
©photosandfloorplans.com

ASKING PRICE: £259,950

TEDDINGTON

020 8943 9777

teddingtonsales@jackson-stops.com

jackson-stops.co.uk

**JACKSON-STOPS**