



HARROWDENE GARDENS
TEDDINGTON

JACKSON-STOPS 

HARROWDENE GARDENS TEDDINGTON, TW11

ASKING PRICE: £315,000

The property is in good condition throughout. The kitchen and living room are separate and there is a double bedroom and bathroom. The heating system has been modernised and further benefits include a garage, parking, communal gardens and access to a loft space.

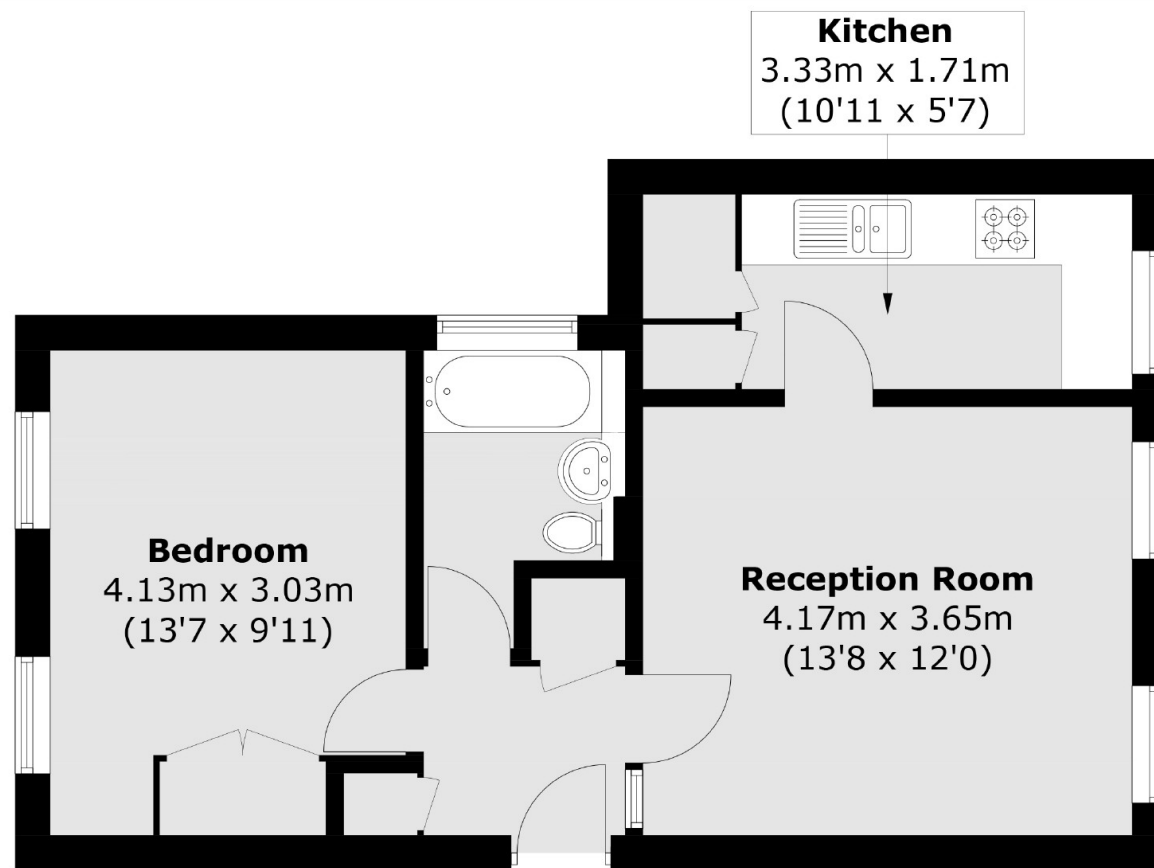
Harrowdene Gardens is off Sandy Lane, an excellent spot for transport, with a well-lit private footpath directly leading to Teddington mainline station and Teddington High Street within minutes. Kingston town centre is within easy reach, along with the River Thames.

KEY FEATURES

- Top Floor Flat
- Garage
- Parking
- Long Lease
- Sought After Location
- One Double Bedroom







Total area (approx.): 43.7 sq. m (470.4 sq. ft)

Energy Rating: . We aim to make our particulars both accurate and reliable. However they are not guaranteed; nor do they form part of an offer or contract. If you require clarification on any points then please contact us, especially if you are travelling some distance to view. Please note that appliances and heating systems have not been tested and therefore no warranties can be given as to their good working order.

ASKING PRICE: £315,000

TEDDINGTON

020 8943 9777

teddingtonsales@jackson-stops.com

jackson-stops.co.uk

JACKSON-STOPS 