



SHEEN ROAD
RICHMOND

JACKSON-STOPS 

SHEEN ROAD RICHMOND, TW9

ASKING PRICE: £1,900 PCM

Offering a south facing balcony is this exceptionally spacious two double bedroom apartment located in the prestigious Lichfield Court development. Benefitting from gated parking, porter, 24 hour security and a moments walk from everything in Central Richmond.

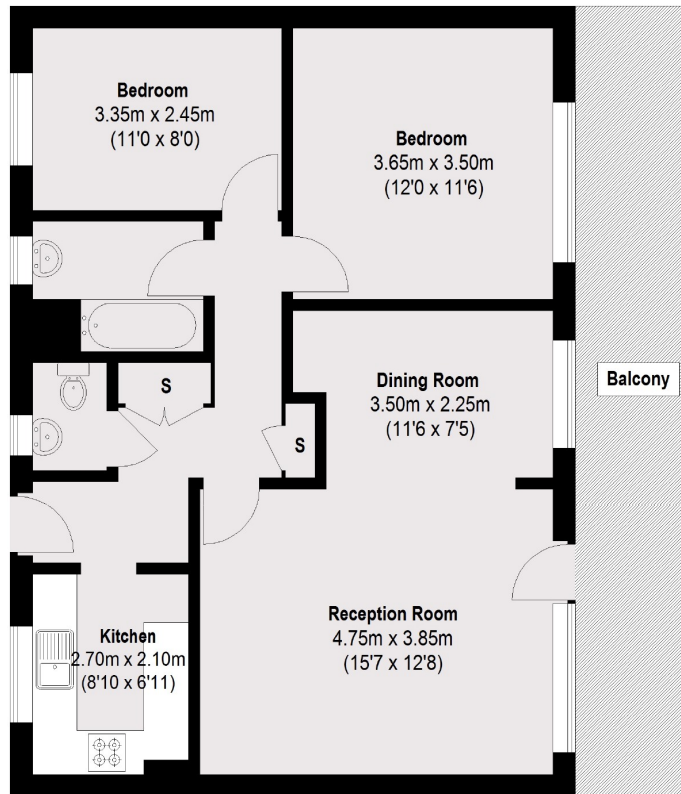
Lichfield Court is in the heart of Richmond's bustling town centre but the development has a tranquil feel to it. Conveniently next to a large supermarket and local coffee shops.

KEY FEATURES

- Open Plan Living
- Private Balcony
- Lift Service
- Two Double Bedrooms
- Modern Bathroom
- Porter







Fourth Floor

Total area (approx.): 70.7 sq. m (761 sq. ft)
Balcony: 17.04 sq. m (183 sq. ft)

Energy Rating: . We aim to make our particulars both accurate and reliable. However they are not guaranteed; nor do they form part of an offer or contract. If you require clarification on any points then please contact us, especially if you are travelling some distance to view. Please note that appliances and heating systems have not been tested and therefore no warranties can be given as to their good working order.

ASKING PRICE: £1,900 PCM

TEDDINGTON

020 8943 9955

teddington@jackson-stops.co.uk

jackson-stops.co.uk

JACKSON-STOPS 