



**BRIDGES AVENUE**  
EAST MOLESEY

**JACKSON-STOPS** 

---

## BRIDGES AVENUE EAST MOLESEY, KT8

ASKING PRICE: £5,500 PCM

Located on the prestigious Imber Riverside estate is this spectacular five-bedroom detached family home. Situated along the banks of the River Ember, the property boasts an abundance of living accommodation across three floors.

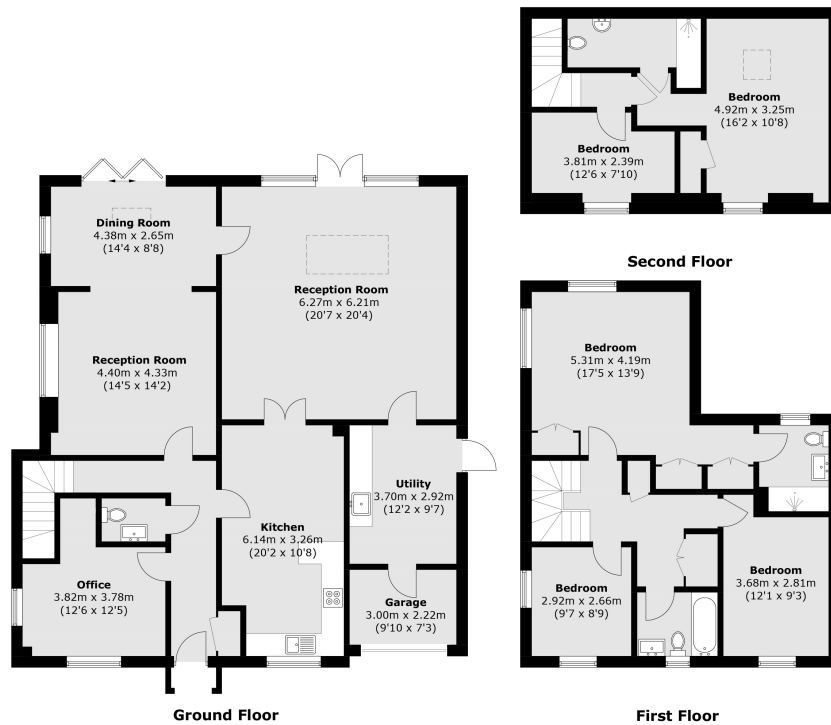
Conveniently positioned in the heart of East Molesey just moments from Hampton Court Palace, the train station and the popular restaurants such as Mezzet and the Mitre.



### KEY FEATURES

- Detached Family Home
- Off Street Parking
- Five Double Bedrooms
- Garage
- Three Living Rooms
- Three Bathrooms





Total area (approx.): 240.2 sq. m (2585.5 sq. ft)

Energy Rating: B. We aim to make our particulars both accurate and reliable. However they are not guaranteed; nor do they form part of an offer or contract. If you require clarification on any points then please contact us, especially if you are travelling some distance to view. Please note that appliances and heating systems have not been tested and therefore no warranties can be given as to their good working order.

**ASKING PRICE: £5,500 PCM**

**TEDDINGTON**

**020 8943 9955**

teddington@jackson-stops.co.uk

jackson-stops.co.uk

**JACKSON-STOPS** 