



CARLISLE CLOSE
NORBITON

JACKSON-STOPS 

CARLISLE CLOSE NORBITON, KT2

ASKING PRICE: £2,350 PCM

New to the market, is this well presented Townhouse. Set over three floors with plenty of living space and three bedrooms. There is a well maintained garden, a garage and off street parking.

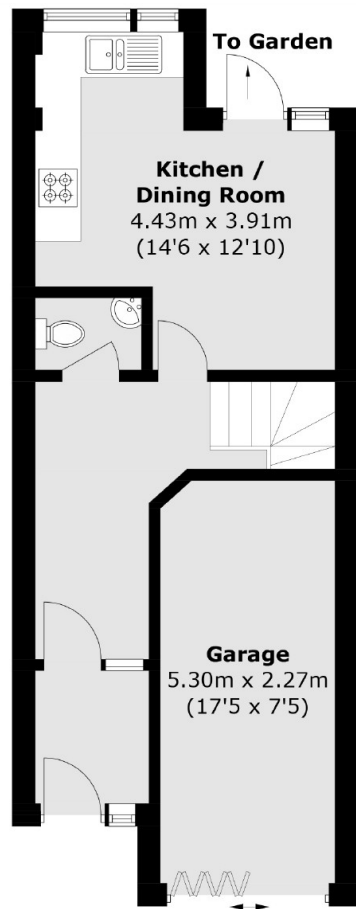
Carlisle Close is within walking distance to Kingston Town Centre with its array of shops, restaurants and bars. Norbiton railway station is 0.2 miles away.



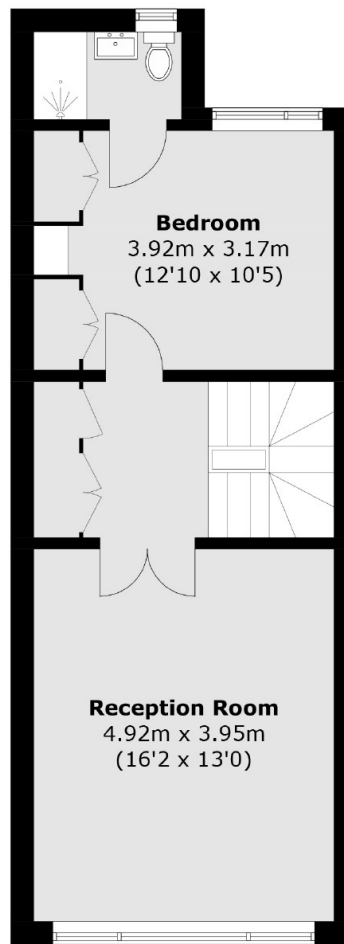
KEY FEATURES

- Lots of Built In Storage
- Private Patio Garden
- Private Driveway
- Three Bedrooms
- Close to Station
- Good Schools

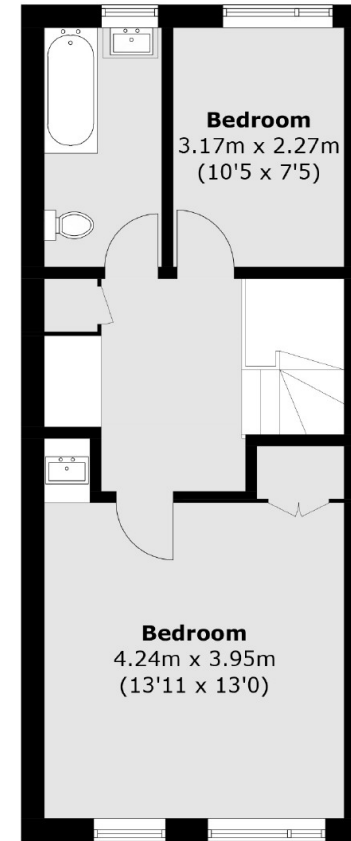




Ground Floor



First Floor



Second Floor

Total area (approx.): 111.8 sq. m (1,203.4 sq. ft)
Garage area : 12.4 sq. m (133.5 sq. ft)

Energy Rating: D. We aim to make our particulars both accurate and reliable. However they are not guaranteed; nor do they form part of an offer or contract. If you require clarification on any points then please contact us, especially if you are travelling some distance to view. Please note that appliances and heating systems have not been tested and therefore no warranties can be given as to their good working order.

ASKING PRICE: £2,350 PCM

TEDDINGTON

020 8943 9955

teddington@jackson-stops.co.uk

jackson-stops.co.uk

JACKSON-STOPS 