



PARISON CLOSE  
RICHMOND

JACKSON-STOPS 

## PARISON CLOSE, RICHMOND, TW9

ASKING PRICE: £450,000

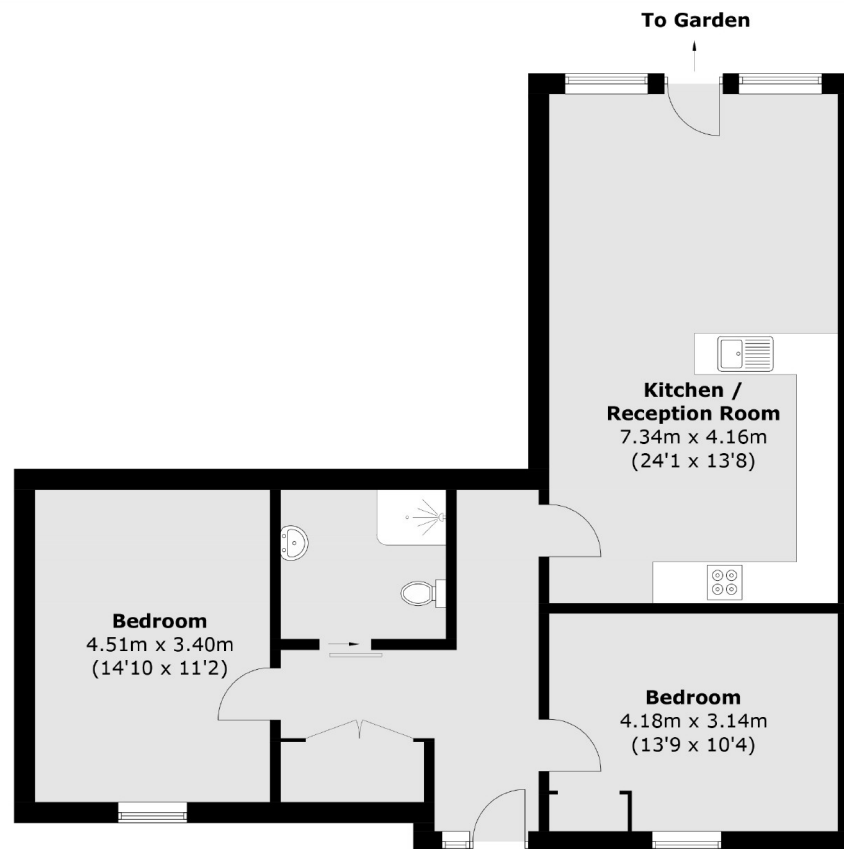
Situated in Richmond-upon-Thames is this modern two bedroom ground floor apartment, featuring private allocated parking and a private garden. The property benefits from just under 850 square feet of living accommodation. There are two large double bedrooms, a very large bathroom and a open plan kitchen / living room leading on to the garden.

The mainline station into Waterloo is on-hand as is the town centre of Richmond upon Thames, where you'll find a vast array of restaurants, bars, leisure facilities and shops. The River Thames, Royal Richmond Park and Kew Gardens are also nearby, whilst for the tennis or golf enthusiast, Dukes Meadows, is not too far away.

### KEY FEATURES

- Private Garden
- Off Street Parking
- Two Double Bedrooms
- 848 Square Feet
- Ground Floor
- Very Low Service Charge

Energy Rating: . We aim to make our particulars both accurate and reliable. However they are not guaranteed; nor do they form part of an offer or contract. If you require clarification on any points then please contact us, especially if you are travelling some distance to view. Please note that appliances and heating systems have not been tested and therefore no warranties can be given as to their good working order.



Total area (approx.): 78.8 sq. m (848.2 sq. ft)

ASKING PRICE: £450,000

TEDDINGTON

020 8943 9777

teddingtonsales@jackson-stops.com

jackson-stops.co.uk

JACKSON-STOPS 